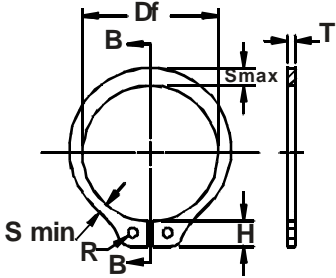
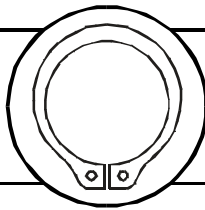
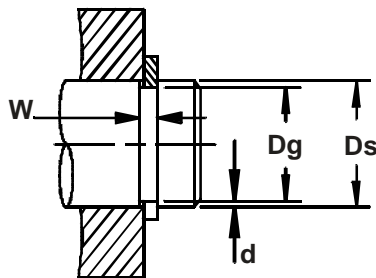




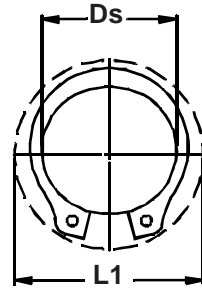
SH-External Inch Retaining Ring



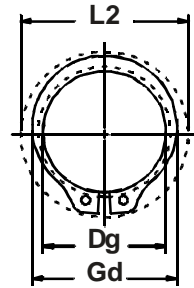
Free Diameter & Ring Measurements
With Section B-B



Shaft Diameter &
Groove Dimensions



Clearance Diameter
Expanded Over Shaft



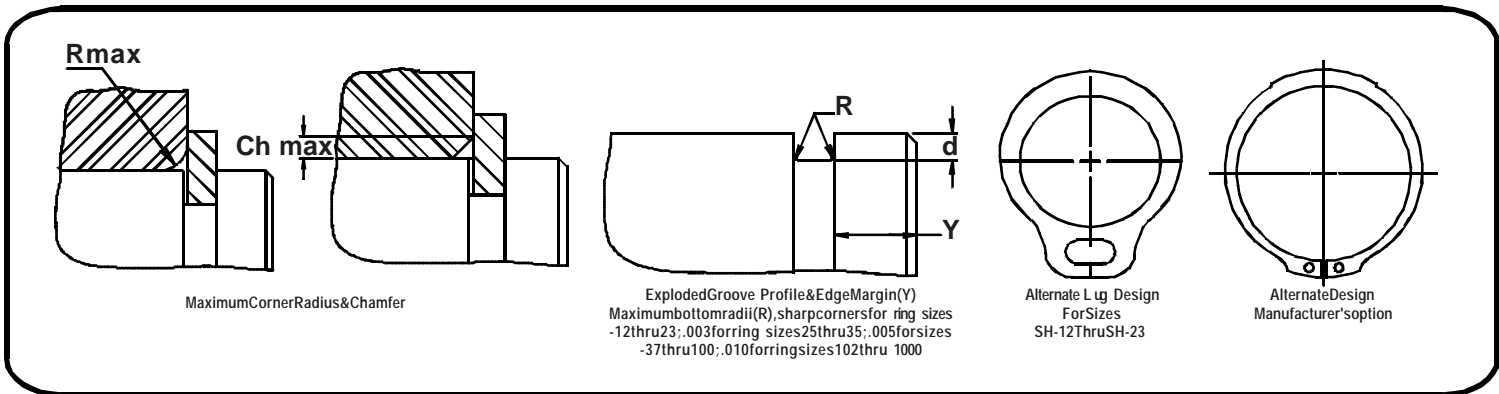
Clearance Diameter &
Gaging Diameter
Released in Groove

RING NO.	SHAFT DIAMETER			GROOVE SIZE					RING SIZE & WEIGHT				CLEARANCE DIA.		THRUST LD. (lbs.)		
				DIAMETER		WIDTH		DEPTH	FREE DIAMETER		THICKNESS**		Weight Per 1000 pcs	Ex- panded over Shaft	Re- leased in Groove	Sqr. Corner Abutment	
	Ds DEC	Ds FRAC	Ds mm	Dg	Tol.	W	Tol.	d	Df	Tol.	T	Tol.				lbs.	L1
SH-354	3.54	-	90.0	3.357		.120		.093	3.277		.109		73.0	429	4.11	46183	23300
SH-362	3.625	3-5/8	92.1	3.435		.120		.095	3.352		.109		76.0	437	4.18	47299	24300
SH-368	3.68	3-11/16	93.7	3.493		.120		.097	3.410		.109	±.003	80.0	443	4.24	48010	25300
SH-375	3.75	3-3/4	95.2	3.552	±.006	.120	+.005	.099	3.468	+.020	.109		83.0	450	4.31	48822	26200
SH-387	3.875	3-7/8	98.4	3.673	.006*	.120	-0.00	.101	3.584	-0.30	.109		88.0	460	4.40	50446	27700
SH-393	3.93	3-15/16	100.0	3.734		.120		.102	3.642		.109		95.0	470	4.50	51359	28400
SH-400	4.00	4	101.6	3.792		.120		.104	3.700		.109		101.0	478	4.58	52171	29400
SH-425	4.25	4-1/4	108.0	4.065		.120		.092	3.989		.109		112.0	509	4.91	55419	27600
SH-437	4.375	4-3/8	111.1	4.190		.120		.092	4.106		.109		115.0	522	5.04	57043	28400
SH-450	4.50	4-1/2	114.3	4.310		.120		.095	4.223		.109		132.0	537	5.18	58667	30200
SH-475	4.75	4-3/4	120.6	4.550		.120		.100	4.458		.109		113.0	567	5.47	61915	33600
SH-500	5.00	5	127.0	4.790		.120		.105	4.692		.109		149.0	596	5.75	65163	37100
SH-525	5.25	5-1/4	133.3	5.030		.139		.110	4.927		.125		190.0	627	6.05	78460	40800
SH-550	5.50	5-1/2	139.7	5.265	±.007	.139	+.006	.117	5.162	+.020	.125	±.004	202.5	657	6.34	82215	45500
SH-575	5.75	5-3/4	146.0	5.505	.006*	.139	-0.00	.122	5.396	-0.40	.125		220.0	686	6.62	85971	49600
SH-600	6.00	6	152.4	5.745		.139		.127	5.631		.125		210.0	716	6.91	89625	53800
SH-625	6.25	6-1/4	158.7	5.985		.174		.132	5.866		.156		282.0	746	7.20	116522	58300
SH-650	6.50	6-1/2	165.1	6.225		.174		.137	6.100	+.020	.156		330.0	787	7.60	121191	62900
SH-675	6.75	6-3/4	171.4	6.465		.174		.142	6.335	-0.50	.156		356.0	806	7.78	125860	67700
SH-700	7.00	7	177.8	6.705		.174		.147	6.570		.156		371.0	815	8.07	130529	72700
SH-725	7.25	7-1/4	184.2	6.942		.209		.154	6.775		.187		510.0	785	8.39	162096	78900
SH-750	7.50	7-1/2	190.5	7.180		.209		.160	7.009		.187		534.0	896	8.64	167678	84800
SH-775	7.75	7-3/4	196.9	7.420	±.008	.209	+.008	.165	7.243	+.050	.187	±.005	545.0	920	8.87	173261	90450
SH-800	8.00	8	203.2	7.660	.006*	.209	-0.00	.170	7.478	-1.30	.187		640.0	960	9.26	178843	96100
SH-825	8.25	8-1/4	209.6	7.900		.209		.175	7.712		.187		665.0	985	9.50	184426	102100
SH-850	8.50	8-1/2	215.9	8.140		.209		.180	7.947		.187		692.0	1010	9.74	190008	108100
SH-875	8.75	8-3/4	222.3	8.380		.209		.185	8.181		.187		712.0	1040	10.00	195591	114450
SH-900	9.00	9	228.6	8.620		.209		.190	8.415		.187		737.0	1060	10.22	201173	120800
SH-925	9.25	9-1/4	234.9	8.860		.209		.195	8.650		.187		760.0	1085	10.50	206756	128225
SH-950	9.50	9-1/2	241.3	9.100		.209		.200	8.885		.187		785.0	1110	10.70	212338	134200
SH-975	9.75	9-3/4	247.6	9.338		.209		.206	9.120		.187		845.0	1135	10.95	217921	142000
SH-1000	10.00	10	254.0	9.575		.209		.212	9.355		.187		910.0	1160	11.20	223503	149800

* F.I.M. (FULL INDICATOR MOVEMENT) - MAXIMUM ALLOWABLE DEVIATION OF CONCENTRICITY BETWEEN GROOVE & SHAFT.

† BASED ON HOUSINGS/SHAFTS MADE OF COLD ROLLED STEEL. FOR AN EXPLANATION OF FORMULAS USED TO DERIVE THRUST LOAD AND OTHER PERFORMANCE DATA CONTACT THE ROTORC L P ENGINEERING DEPARTMENT.

** FOR RELATED RINGS ADD .002" TO THE LISTED MAXIMUM THICKNESS. MAXIMUM THICKNESS WILL BE A MINIMUM OF .0002" LESS THAN THE LISTED GROOVE WIDTH (W) MINIMUM.



RING NO.	LUG HEIGHT		MAXIMUM SECTION		MINIMUM SECTION		HOLE DIAMETER		GAGING DIA.	ALLOWABLE CORNER RADI & CHAMFERS		MAX LOAD w/ Rmax or Ch max (lbs)	EDGE MARGIN	R.P.M. LIMITS Standard Material
	H	Tol.	S max	Tol.	S min	Tol.	R	Tol.		Gd Max.	R max			
SH-354	.328		.288		.149		.125		3.809	.123	.074	10500	.279	5800
SH-362	.328		.296		.153		.125		3.898	.127	.076	10500	.285	5700
SH-368	.310		.310		.156		.125	+.015	3.966	.130	.078	10500	.291	5600
SH-375	.332	±.005	.310	±.008	.160	±.008	.125	-.002	4.037	.133	.080	10500	.297	5500
SH-387	.330		.318		.163		.125		4.169	.137	.082	10500	.303	5100
SH-393	.342		.318		.163		.125		4.230	.137	.082	10500	.306	5200
SH-400	.352		.318		.163		.125		4.288	.135	.081	10500	.312	5000
SH-425	.342		.342		.176		.125		4.558	.146	.088	10500	.276	4800
SH-437	.395		.318		.181		.125		4.683	.146	.088	10500	.276	4700
SH-450	.405		.405		.185		.125		4.860	.102	.061	10500	.285	4500
SH-475	.429		.303		.136		.125		4.996	.115	.069	10500	.300	4200
SH-500	.405	±.008	.405	±.010	.194	±.010	.156		5.346	.165	.099	10500	.315	4000
SH-525	.435		.435		2.11		.156	+.020	5.605	.169	.101	13500	.330	3900
SH-550	.497		.390		2.09		.156	-.005	5.867	.175	.105	13500	.351	3700
SH-575	.518		.408		2.20		.156		6.134	.184	.110	13500	.366	3500
SH-600	.540		.381		1.71		.156		6.302	.143	.086	13500	.381	3400
SH-625	.561		.396		.176		.156		6.568	.148	.089	21000	.396	3100
SH-650	.586		.438		.236		.156		6.905	.191	.114	21000	.411	3000
SH-675	.608		.456		.246		.187	+.020	7.172	.200	.120	21000	.426	3000
SH-700	.530		.474		.256		.187	-.005	7.439	.208	.125	21000	.441	2900
SH-725	.660		.490		.267		.187		7.700	.214	.128	30000	.460	2800
SH-750	.676		.507		.277		.187		7.963	.220	.132	30000	.480	2700
SH-775	.660	±.012	.523	±.015	.285	±.015	.187		8.228	.227	.136	30000	.495	2600
SH-800	.735		.540		.294		.187		8.493	.235	.141	30000	.510	2500
SH-825	.735		.556		.304		.187		8.758	.242	.146	30000	.525	2400
SH-850	.735		.573		.314		.187		9.023	.250	.150	30000	.540	2300
SH-875	.735		.591		.322		.187		9.280	.258	.155	30000	.555	2200
SH-900	.735		.609		.333		.187		9.557	.267	.160	30000	.570	2200
SH-925	.735		.625		.341		.187		9.830	.274	.164	30000	.585	2100
SH-950	.735		.642		.350		.187		10.086	.281	.168	30000	.600	2100
SH-975	.735		.658		.358		.187		10.340	.287	.172	30000	.618	2000
SH-1000	.735		.675		.367		.187		10.610	.294	.176	30000	.636	2000

LARGER SIZES MAY BE AVAILABLE UPON REQUEST.