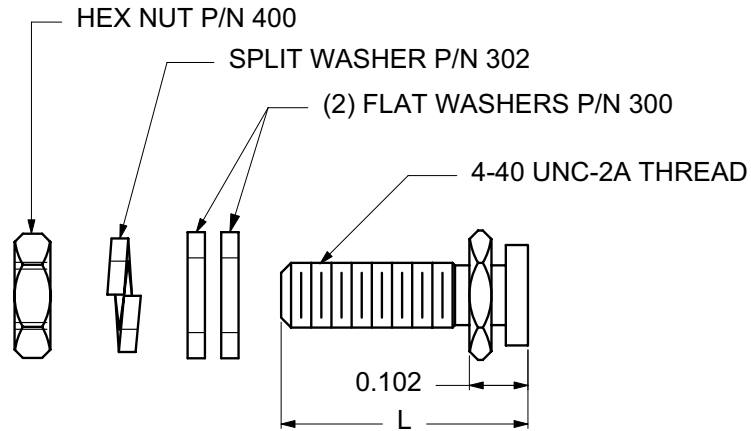




# SLIDE LATCH POST ASSEMBLY



ORDERING CODE	XX MATERIAL	XXXX BASIC PART NUMBER	XX FINISH
------------------	----------------	------------------------------	--------------

MATERIAL	CODE
STEEL	ST

BASIC PART NUMBERS			L
LOCKING POST ONLY	LOCKING POST ASS'Y KIT	LOCKING POST ASS'Y BULK	LENGTH
9375	9376	9377	.416
9378	9379	9380	.560

CODE	FINISH
31	Cadmium QQ-P-416, CL 2 — Clear Chromate
32	Cadmium QQ-P-416, CL 2, Type II — Yellow Chromate
33	Zinc, ASTM B633, Type II, CL 3 — Black Chromate
34	Zinc ASTM B633, Type III, Fe/Zn 8 — Clear Chromate
35	Zinc ASTM B633, Type I, Fe/Zn 8 — No Chromate
36	Zinc ASTM B633, Type II, Fe/Zn 8 — Yellow Chromate
43	Bright Tin — MIL-T-10727
50	Black Oxide MIL-C-13924 — Steel
61	Nickel QQ-N-290 CL 1, Type VI KC
63	Ductile, Nickel — QQ-N-290

**NOTES:**

- Two assemblies are required per connector.
- Each kit contains 2 posts, 4 flat washers, 2 split lock washers, 2 hex nuts.
- Bulk quantities — each type part is separately packaged.
- All parts are shipped unassembled.
- Other male end lengths are available.
- All dimensions are for reference only. Tolerances are to manufacturer's standards.

**G5**