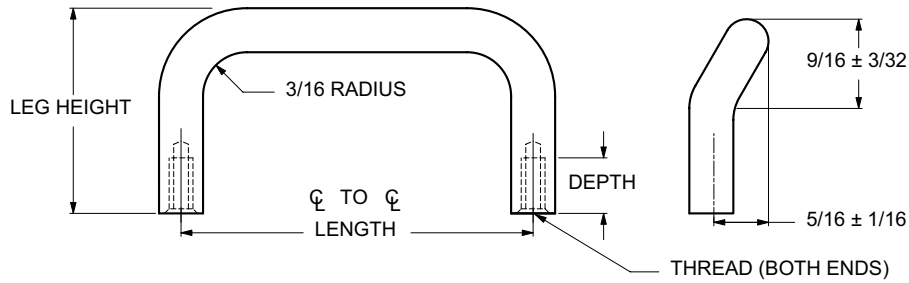




3/16 ROUND OFFSET HANDLES INTERNAL THREAD



ORDERING CODE	XX	XXXX	XXXX	XX
	MATERIAL	BASIC PART	THREAD	FINISH

MATERIAL	CODE
ALUMINUM	AL
BRASS	BR
STAINLESS STEEL	SS
STEEL	ST

THREAD SIZE	CODE	THREAD DEPTH
4-40	0440	1/4-5/16
6-32	0632	1/4-3/8

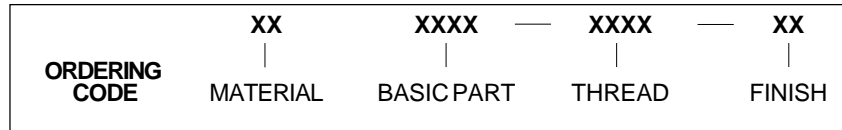
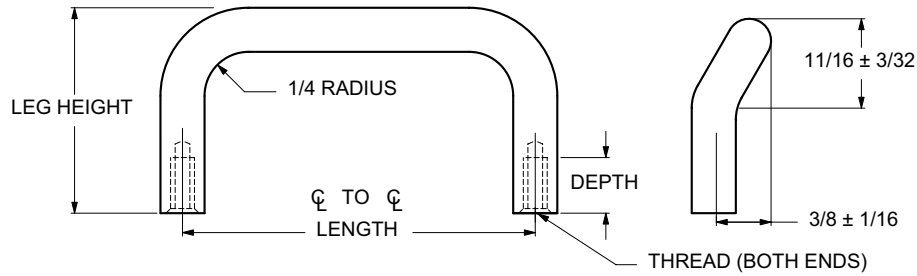
LENGTH CL TO CL ±1/32	LEG HEIGHT ±1/32	BASIC PART NUMBER
2"	1"	1248
3"		1249
4"		1250
4-1/2"		1251
5"		1252
6"	1253	
2"	1-1/2"	1254
3"		1255
4"		1256
4-1/2"		1257
5"		1258
6"	1259	

CODE	FINISH	CODE	FINISH
00	Plain — None	21	Iridite MIL-C-5541 — Clear
01	Passivate MIL-F-14072-E300	22	Iridite MIL-C-5541 — Gold #14
02	Caustic Etch	31	Cadmium QQ-P-416, CL 2 — Clear Chromate
12	Anodize MIL-A-8625C, Type II Sulphuric Hot Water Seal — Clear	32	Cadmium QQ-P-416, CL 2 — Color Chromate
13	Anodize MIL-A-8625C, Type II Sulphuric Dichromate Seal — Yellow Green	34	Zinc QQ-Z-325, Type II, CL 3 — Clear Chromate
14	Anodize MIL-A-8625C — Black	36	Zinc QQ-Z-325, Type II, CL 3 — Yellow Chromate
15	Semi-Frost Anodize — Clear	51	Black Oxide MIL-F-495 — Brass
16	Semi-Frost Anodize — Black	52	Black Oxide MIL-C-13924 — Stainless Steel
17	Satin Anodize — Clear	61	Nickel QQ-N-290 CL 1, Type VI KC
18	Satin Anodize — Black	62	Black Nickel
		71	Chrome QQ-C-320 CL 1, Type 1 — Bright
		72	Chrome QQ-C-320 CL 1, Type 1 — Satin

E9



1/4 ROUND OFFSET HANDLES INTERNAL THREAD



MATERIAL	CODE
ALUMINUM	AL
BRASS	BR
STAINLESS STEEL	SS
STEEL	ST

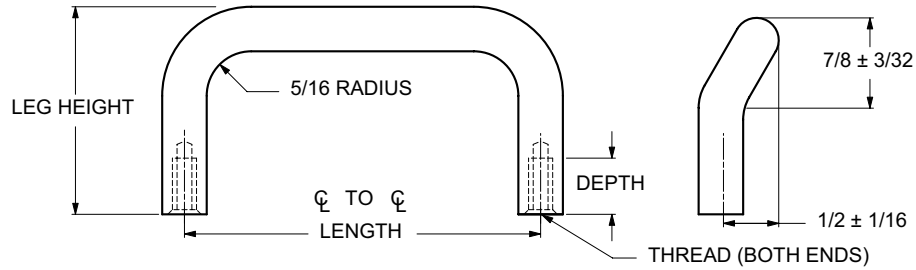
THREAD SIZE	CODE	THREAD DEPTH
6-32	0632	5/16-7/16
8-32	0832	5/16-7/16

LENGTH CL TO CL ±1/32	LEG HEIGHT ±1/32	BASIC PART NUMBER
2"	1"	1260
3"		1261
4"		1262
4-1/2"		1263
5"		1264
6"		1265
2"	1-1/2"	1266
3"		1267
4"		1268
4-1/2"		1269
5"		1270
5-1/2"		1271
6"	1272	
2"	2"	1273
3"		1274
4"		1275
4-1/2"		1276
5"		1277
6"		1278

CODE	FINISH	CODE	FINISH
00	Plain — None	21	Iridite MIL-C-5541 — Clear
01	Passivate MIL-F-14072-E300	22	Iridite MIL-C-5541 — Gold #14
02	Caustic Etch	31	Cadmium QQ-P-416, CL 2 — Clear Chromate
12	Anodize MIL-A-8625C, Type II Sulphuric Hot Water Seal — Clear	32	Cadmium QQ-P-416, CL 2 — Color Chromate
13	Anodize MIL-A-8625C, Type II Sulphuric Dichromate Seal — Yellow Green	34	Zinc QQ-Z-325, Type II, CL 3 — Clear Chromate
14	Anodize MIL-A-8625C — Black	36	Zinc QQ-Z-325, Type II, CL 3 — Yellow Chromate
15	Semi-Frost Anodize — Clear	51	Black Oxide MIL-F-495 — Brass
16	Semi-Frost Anodize — Black	52	Black Oxide MIL-C-13924 — Stainless Steel
17	Satin Anodize — Clear	61	Nickel QQ-N-290 CL 1, Type VI KC
18	Satin Anodize — Black	62	Black Nickel
		71	Chrome QQ-C-320 CL 1, Type 1 — Bright
		72	Chrome QQ-C-320 CL 1, Type 1 — Satin



5/16 ROUND OFFSET HANDLES INTERNAL THREAD



ORDERING CODE	XX	XXXX	XXXX	XX
	MATERIAL	BASIC PART	THREAD	FINISH

MATERIAL	CODE
ALUMINUM	AL
BRASS	BR
STAINLESS STEEL	SS
STEEL	ST

THREAD SIZE	CODE	THREAD DEPTH
8-32	0832	5/16-7/16
10-32	1032	5/16-1/2

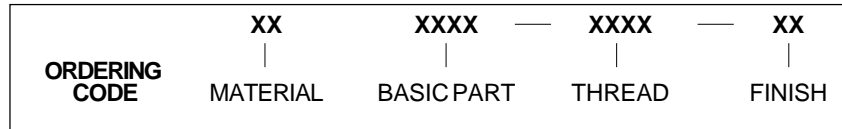
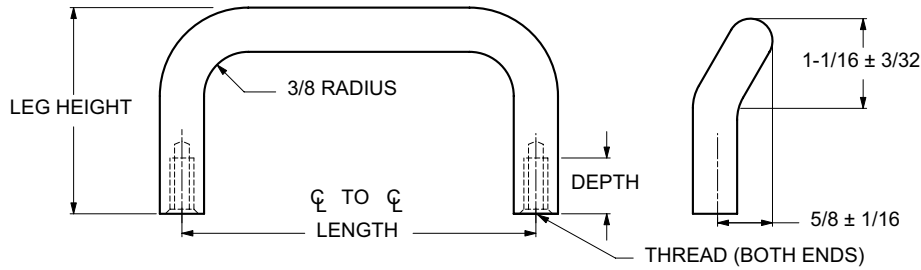
LENGTH CL TO CL ±1/32	LEG HEIGHT ±1/32	BASIC PART NUMBER
2"	1-5/16	1279
2-1/2"		1280
3"		1281
4"		1282
5"		1283
6"		1284
3"	1-1/2	1285
4"		1286
4-1/4"		1287
4-1/2"		1288
4-9/16"		1289
5"		1290
5-1/2"	1291	
6"	1292	
3"	1-3/4	1293
4"		1294
4-1/4"		1295
4-1/2"		1296
4-9/16"		1297
5"		1298
5-1/2"	1299	
6"	1300	

CODE	FINISH	CODE	FINISH
00	Plain — None	22	Iridite MIL-C-5541 — Gold #14
01	Passivate MIL-F-14072-E300	31	Cadmium QQ-P-416, CL 2 — Clear Chromate
02	Caustic Etch	32	Cadmium QQ-P-416, CL 2 — Color Chromate
12	Anodize MIL-A-8625C, Type II Sulphuric Hot Water Seal — Clear	34	Zinc QQ-Z-325, Type II, CL 3 — Clear Chromate
13	Anodize MIL-A-8625C, Type II Sulphuric Dichromate Seal — Yellow Green	36	Zinc QQ-Z-325, Type II, CL 3 — Yellow Chromate
14	Anodize MIL-A-8625C — Black	51	Black Oxide MIL-F-495 — Brass
15	Semi-Frost Anodize — Clear	52	Black Oxide MIL-C-13924 — Stainless Steel
16	Semi-Frost Anodize — Black	61	Nickel QQ-N-290 CL 1, Type VI KC
21	Iridite MIL-C-5541 — Clear	62	Black Nickel
		71	Chrome QQ-C-320 CL 1, Type 1 — Bright
		72	Chrome QQ-C-320 CL 1, Type 1 — Satin

E11



3/8 ROUND OFFSET HANDLES INTERNAL THREAD



MATERIAL	CODE
ALUMINUM	AL
BRASS	BR
STAINLESS STEEL	SS
STEEL	ST

THREAD SIZE	CODE	THREAD DEPTH
8-32	0832	9/16
10-32	1032	1/2-9/16

LENGTH CL TO CL ±1/32	LEG HEIGHT ±1/32	BASIC PART NUMBER
3"	1-3/4	1301
4"		1302
4-1/4		1303
4-1/2		1304
4-9/16		1305
5"		1306
5-1/2		1307
6"		1308
3"	2"	1309
4"		1310
4-1/4		1311
4-1/2		1312
4-9/16		1313
5"		1314
5-1/2		1315
6"		1316

CODE	FINISH	CODE	FINISH
00	Plain — None	21	Iridite MIL-C-5541 — Clear
01	Passivate MIL-F-14072-E300	22	Iridite MIL-C-5541 — Gold #14
02	Caustic Etch	31	Cadmium QQ-P-416, CL 2 — Clear Chromate
12	Anodize MIL-A-8625C, Type II Sulphuric Hot Water Seal — Clear	32	Cadmium QQ-P-416, CL 2 — Color Chromate
13	Anodize MIL-A-8625C, Type II Sulphuric Dichromate Seal — Yellow Green	34	Zinc QQ-Z-325, Type II, CL 3 — Clear Chromate
14	Anodize MIL-A-8625C — Black	36	Zinc QQ-Z-325, Type II, CL 3 — Yellow Chromate
15	Semi-Frost Anodize — Clear	51	Black Oxide MIL-F-495 — Brass
16	Semi-Frost Anodize — Black	52	Black Oxide MIL-C-13924 — Stainless Steel
17	Satin Anodize — Clear	61	Nickel QQ-N-290 CL 1, Type VI KC
18	Satin Anodize — Black	62	Black Nickel
		71	Chrome QQ-C-320 CL 1, Type 1 — Bright
		72	Chrome QQ-C-320 CL 1, Type 1 — Satin