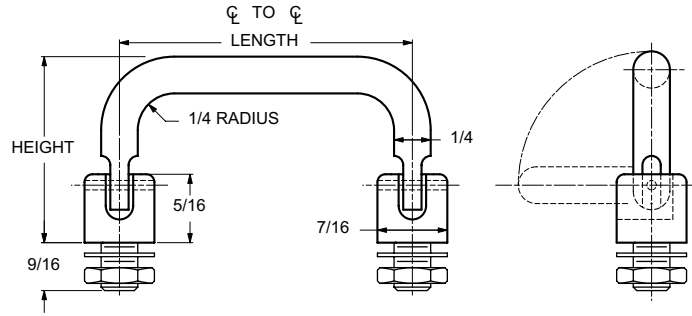


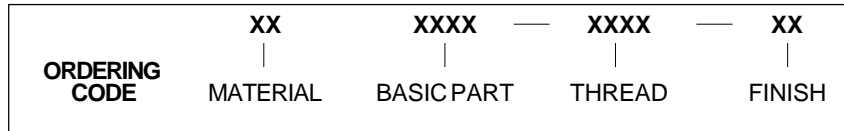


1/4 ROUND 90° INFINITE POSITION HANDLES

EXTERNAL THREAD



Nuts and washers are supplied



| MATERIAL | CODE |
|-----------------|------|
| ALUMINUM | AL |
| BRASS | BR |
| STAINLESS STEEL | SS |
| STEEL | ST |

| THREAD SIZE | THREAD CODE |
|-------------|-------------|
| 1/4-28 | 2528 |
| 5/16-24 | 3124 |

| LENGTH ℄ TO ℄ ±1/32 | LEG HEIGHT ±1/32 | BASIC PART NUMBER |
|---------------------------|------------------------|-------------------------|
| 3" | | 1649 |
| 3-1/2" | | 1650 |
| 4" | | 1651 |
| 4-1/2" | 1.460 | 1652 |
| 5" | | 1653 |
| 6" | | 1654 |
| 7" | | 1655 |

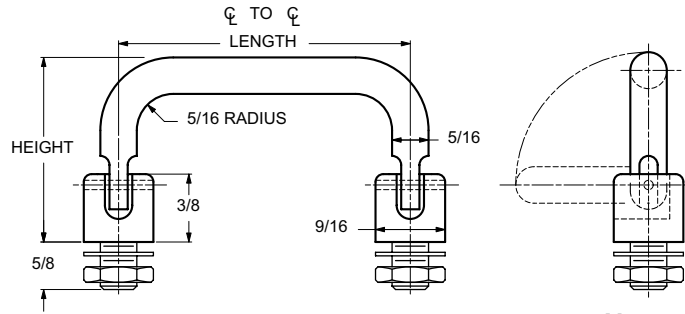
| CODE | FINISH | CODE | FINISH |
|------|--|------|--|
| 00 | Plain — None | 21 | Iridite MIL-C-5541 — Clear |
| 01 | Passivate MIL-F-14072-E300 | 22 | Iridite MIL-C-5541 — Gold #14 |
| 02 | Caustic Etch | 31 | Cadmium QQ-P-416, CL 2 — Clear Chromate |
| 12 | Anodize MIL-A-8625C, Type II Sulphuric Hot Water Seal — Clear | 32 | Cadmium QQ-P-416, CL 2 — Color Chromate |
| 13 | Anodize MIL-A-8625C, Type II Sulphuric Dichromate Seal — Yellow Green | 34 | Zinc QQ-Z-325, Type II, CL 3 — Clear Chromate |
| 14 | Anodize MIL-A-8625C — Black | 36 | Zinc QQ-Z-325, Type II, CL 3 — Yellow Chromate |
| 15 | Semi-Frost Anodize — Clear | 51 | Black Oxide MIL-F-495 — Brass |
| 16 | Semi-Frost Anodize — Black | 52 | Black Oxide MIL-C-13924 — Stainless Steel |
| 17 | Satin Anodize — Clear | 61 | Nickel QQ-N-290 CL 1, Type VI KC |
| 18 | Satin Anodize — Black | 62 | Black Nickel |
| | | 71 | Chrome QQ-C-320 CL 1, Type 1 — Bright |
| | | 72 | Chrome QQ-C-320 CL 1, Type 1 — Satin |

E26

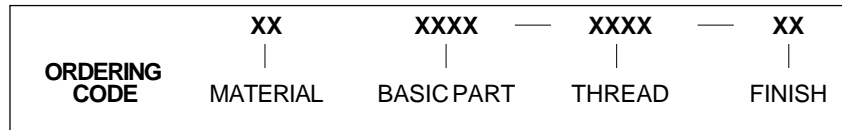


5/16 ROUND 90° INFINITE POSITION HANDLES

EXTERNAL THREAD



Nuts and washers are supplied



| MATERIAL | CODE |
|-----------------|-----------|
| ALUMINUM | AL |
| BRASS | BR |
| STAINLESS STEEL | SS |
| STEEL | ST |

| THREAD SIZE | THREAD CODE |
|-------------|-------------|
| 5/16-24 | 3124 |
| 3/8-24 | 3724 |

| LENGTH ℄ TO ℄ ±1/32 | LEG HEIGHT ±1/32 | BASIC PART NUMBER |
|---------------------------|------------------------|-------------------------|
| 3" | | 1656 |
| 3-1/2" | | 1657 |
| 4" | | 1658 |
| 4-1/2" | 1.620 | 1659 |
| 5" | | 1660 |
| 6" | | 1661 |
| 7" | | 1662 |

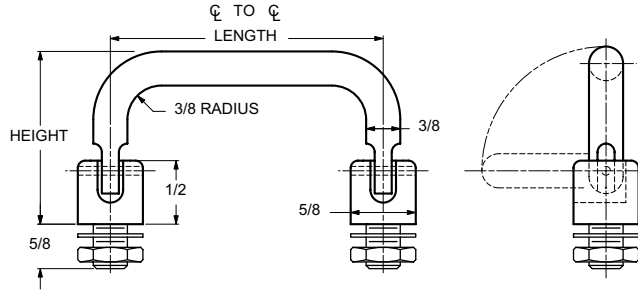
E27

| CODE | FINISH | CODE | FINISH |
|-----------|--|-----------|--|
| 00 | Plain — None | 21 | Iridite MIL-C-5541 — Clear |
| 01 | Passivate MIL-F-14072-E300 | 22 | Iridite MIL-C-5541 — Gold #14 |
| 02 | Caustic Etch | 31 | Cadmium QQ-P-416, CL 2 — Clear Chromate |
| 12 | Anodize MIL-A-8625C, Type II Sulphuric Hot Water Seal — Clear | 32 | Cadmium QQ-P-416, CL 2 — Color Chromate |
| 13 | Anodize MIL-A-8625C, Type II Sulphuric Dichromate Seal — Yellow Green | 34 | Zinc QQ-Z-325, Type II, CL 3 — Clear Chromate |
| 14 | Anodize MIL-A-8625C — Black | 36 | Zinc QQ-Z-325, Type II, CL 3 — Yellow Chromate |
| 15 | Semi-Frost Anodize — Clear | 51 | Black Oxide MIL-F-495 — Brass |
| 16 | Semi-Frost Anodize — Black | 52 | Black Oxide MIL-C-13924 — Stainless Steel |
| 17 | Satin Anodize — Clear | 61 | Nickel QQ-N-290 CL 1, Type VI KC |
| 18 | Satin Anodize — Black | 62 | Black Nickel |
| | | 71 | Chrome QQ-C-320 CL 1, Type 1 — Bright |
| | | 72 | Chrome QQ-C-320 CL 1, Type 1 — Satin |

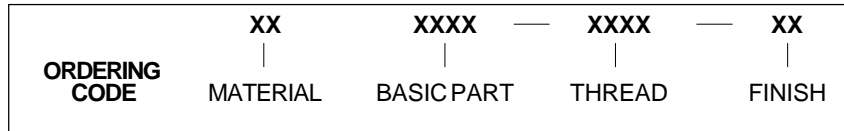


3/8 ROUND 90° INFINITE POSITION HANDLES

EXTERNAL THREAD



Nuts and washers are supplied



| MATERIAL | CODE |
|-----------------|------|
| ALUMINUM | AL |
| BRASS | BR |
| STAINLESS STEEL | SS |
| STEEL | ST |

| THREAD SIZE | THREAD CODE |
|-------------|-------------|
| 5/16-24 | 3124 |
| 3/8-24 | 3724 |

| LENGTH ℄ TO ℄ ±1/32 | LEG HEIGHT ±1/32 | BASIC PART NUMBER |
|---------------------------|------------------------|-------------------------|
| 3" | | 1663 |
| 3-1/2" | | 1664 |
| 4" | | 1665 |
| 4-1/2" | 1.810 | 1666 |
| 5" | | 1667 |
| 6" | | 1668 |
| 7" | | 1669 |

| CODE | FINISH | CODE | FINISH |
|------|--|------|--|
| 00 | Plain — None | 21 | Iridite MIL-C-5541 — Clear |
| 01 | Passivate MIL-F-14072-E300 | 22 | Iridite MIL-C-5541 — Gold #14 |
| 02 | Caustic Etch | 31 | Cadmium QQ-P-416, CL 2 — Clear Chromate |
| 12 | Anodize MIL-A-8625C, Type II Sulphuric Hot Water Seal — Clear | 32 | Cadmium QQ-P-416, CL 2 — Color Chromate |
| 13 | Anodize MIL-A-8625C, Type II Sulphuric Dichromate Seal — Yellow Green | 34 | Zinc QQ-Z-325, Type II, CL 3 — Clear Chromate |
| 14 | Anodize MIL-A-8625C — Black | 36 | Zinc QQ-Z-325, Type II, CL 3 — Yellow Chromate |
| 15 | Semi-Frost Anodize — Clear | 51 | Black Oxide MIL-F-495 — Brass |
| 16 | Semi-Frost Anodize — Black | 52 | Black Oxide MIL-C-13924 — Stainless Steel |
| 17 | Satin Anodize — Clear | 61 | Nickel QQ-N-290 CL 1, Type VI KC |
| 18 | Satin Anodize — Black | 62 | Black Nickel |
| | | 71 | Chrome QQ-C-320 CL 1, Type 1 — Bright |
| | | 72 | Chrome QQ-C-320 CL 1, Type 1 — Satin |

E28