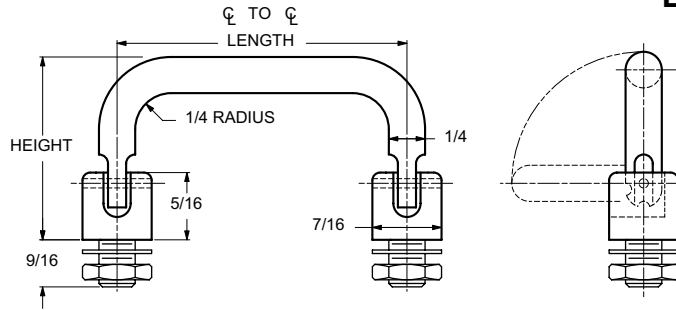




1/4 ROUND 90° TWO POSITION HANDLES

EXTERNAL THREAD



Nuts and washers are supplied

ORDERING CODE	XX	XXXX	XXXX	XX
	MATERIAL	BASIC PART	THREAD	FINISH

MATERIAL	CODE
ALUMINUM	AL
BRASS	BR
STAINLESS STEEL	SS
STEEL	ST

THREAD SIZE	THREAD CODE
1/4-28	2528
5/16-24	3124

LENGTH ϕ TO ϕ ±1/32	LEG HEIGHT ±1/32	BASIC PART NUMBER
4"	1.430	1691
4-1/4"		1692
4-1/2"		1693
5"		1694
6"		1695
7"	1696	
3"	1.460	1697
3-1/2"		1698
4"		1699
4-1/4"		1700
4-1/2"		1701
5"		1702
6"	1703	

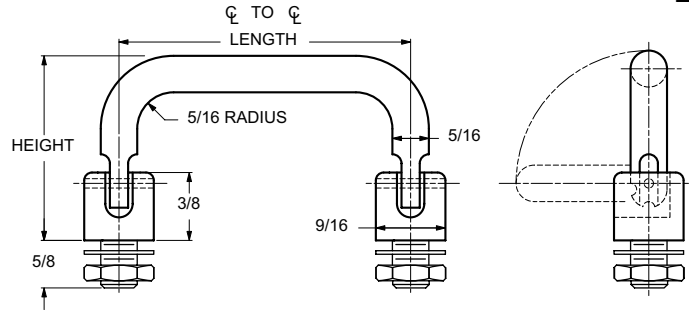
CODE	FINISH	CODE	FINISH
00	Plain — None	21	Iridite MIL-C-5541 — Clear
01	Passivate MIL-F-14072-E300	22	Iridite MIL-C-5541 — Gold #14
02	Caustic Etch	31	Cadmium QQ-P-416, CL 2 — Clear Chromate
12	Anodize MIL-A-8625C, Type II Sulphuric Hot Water Seal — Clear	32	Cadmium QQ-P-416, CL 2 — Color Chromate
13	Anodize MIL-A-8625C, Type II Sulphuric Dichromate Seal — Yellow Green	34	Zinc QQ-Z-325, Type II, CL 3 — Clear Chromate
14	Anodize MIL-A-8625C — Black	36	Zinc QQ-Z-325, Type II, CL 3 — Yellow Chromate
15	Semi-Frost Anodize — Clear	51	Black Oxide MIL-F-495 — Brass
16	Semi-Frost Anodize — Black	52	Black Oxide MIL-C-13924 — Stainless Steel
17	Satin Anodize — Clear	61	Nickel QQ-N-290 CL 1, Type VI KC
18	Satin Anodize — Black	62	Black Nickel
		71	Chrome QQ-C-320 CL 1, Type 1 — Bright
		72	Chrome QQ-C-320 CL 1, Type 1 — Satin

E32

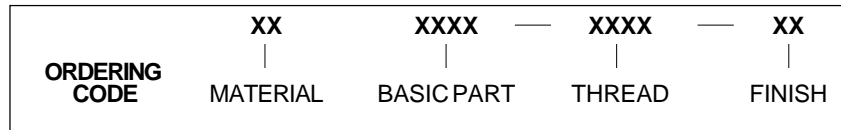


5/16 ROUND 90° TWO POSITION HANDLES

EXTERNAL THREAD



Nuts and washers are supplied



MATERIAL	CODE
ALUMINUM	AL
BRASS	BR
STAINLESS STEEL	SS
STEEL	ST

THREAD SIZE	THREAD CODE
5/16-24	3124
3/8-24	3724

LENGTH ℄ TO ℄ ±1/32	LEG HEIGHT ±1/32	BASIC PART NUMBER
3"	1.531	1704
3-1/2"		1705
4"		1706
4-1/4"		1707
4-1/2"		1708
5"		1709
6"	1710	
3"	1.810	1711
3-1/2"		1712
4"		1713
4-1/4"		1714
4-1/2"		1715
5"		1716
6"	1717	
4"	1.850	1718
4-1/4"		1719
4-1/2"		1720
5"		1721
6"		1722

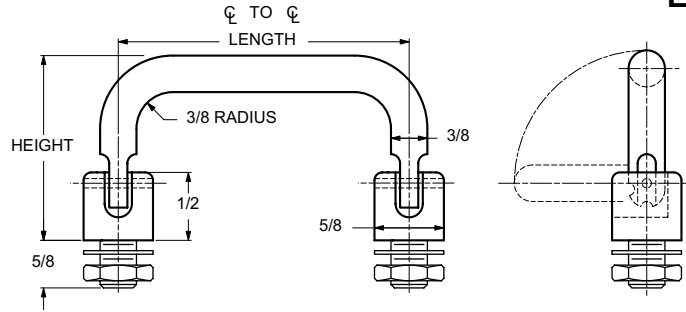
CODE	FINISH	CODE	FINISH
00	Plain — None	21	Iridite MIL-C-5541 — Clear
01	Passivate MIL-F-14072-E300	22	Iridite MIL-C-5541 — Gold #14
02	Caustic Etch	31	Cadmium QQ-P-416, CL 2 — Clear Chromate
12	Anodize MIL-A-8625C, Type II Sulphuric Hot Water Seal — Clear	32	Cadmium QQ-P-416, CL 2 — Color Chromate
13	Anodize MIL-A-8625C, Type II Sulphuric Dichromate Seal — Yellow Green	34	Zinc QQ-Z-325, Type II, CL 3 — Clear Chromate
14	Anodize MIL-A-8625C — Black	36	Zinc QQ-Z-325, Type II, CL 3 — Yellow Chromate
15	Semi-Frost Anodize — Clear	51	Black Oxide MIL-F-495 — Brass
16	Semi-Frost Anodize — Black	52	Black Oxide MIL-C-13924 — Stainless Steel
17	Satin Anodize — Clear	61	Nickel QQ-N-290 CL 1, Type VI KC
18	Satin Anodize — Black	62	Black Nickel
		71	Chrome QQ-C-320 CL 1, Type 1 — Bright
		72	Chrome QQ-C-320 CL 1, Type 1 — Satin

E33



3/8 ROUND 90° TWO POSITION HANDLES

EXTERNAL THREAD



Nuts and washers are supplied

ORDERING CODE	XX	XXXX	XXXX	XX
	MATERIAL	BASIC PART	THREAD	FINISH

MATERIAL	CODE
ALUMINUM	AL
BRASS	BR
STAINLESS STEEL	SS
STEEL	ST

THREAD SIZE	THREAD CODE
5/16-24	3124
3/8-24	3724

LENGTH ℄ TO ℄ ±1/32	LEG HEIGHT ±1/32	BASIC PART NUMBER
3"		1723
3-1/2"		1724
4"		1725
4-1/4"	1.530	1726
4-1/2"		1727
5"		1728
6"		1729
4"		1730
4-1/4"		1731
4-1/2"		1732
5"	1.625	1733
6"		1734
7"		1735

LENGTH ℄ TO ℄ ±1/32	LEG HEIGHT ±1/32	BASIC PART NUMBER
4"		1736
4-1/4"		1737
4-1/2"	1.810	1738
5"		1739
6"		1740
7"		1741
4"		1742
4-1/4"		1743
4-1/2"	1.843	1744
5"		1745
6"		1746
3"		1747
3-1/2"		1748
4"		1749
4-1/4"	1.850	1750
4-1/2"		1751
5"		1752
6"		1753
4"		1754
4-1/4"	2.375	1755
4-1/2"		1756
5"		1757

CODE	FINISH	CODE	FINISH
00	Plain — None	21	Iridite MIL-C-5541 — Clear
01	Passivate MIL-F-14072-E300	22	Iridite MIL-C-5541 — Gold #14
02	Caustic Etch	31	Cadmium QQ-P-416, CL 2 — Clear Chromate
12	Anodize MIL-A-8625C, Type II Sulphuric Hot Water Seal — Clear	32	Cadmium QQ-P-416, CL 2 — Color Chromate
13	Anodize MIL-A-8625C, Type II Sulphuric Dichromate Seal — Yellow Green	34	Zinc QQ-Z-325, Type II, CL 3 — Clear Chromate
14	Anodize MIL-A-8625C — Black	36	Zinc QQ-Z-325, Type II, CL 3 — Yellow Chromate
15	Semi-Frost Anodize — Clear	51	Black Oxide MIL-F-495 — Brass
16	Semi-Frost Anodize — Black	52	Black Oxide MIL-C-13924 — Stainless Steel
17	Satin Anodize — Clear	61	Nickel QQ-N-290 CL 1, Type VI KC
18	Satin Anodize — Black	62	Black Nickel
		71	Chrome QQ-C-320 CL 1, Type 1 — Bright
		72	Chrome QQ-C-320 CL 1, Type 1 — Satin

E34