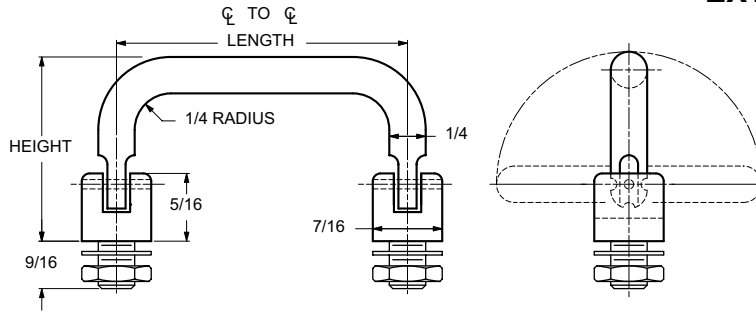


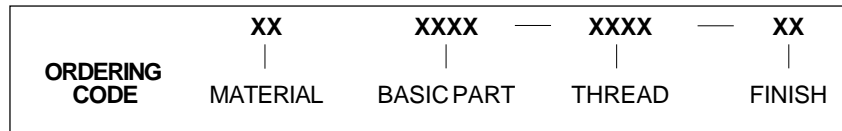


1/4 ROUND 180° THREE POSITION HANDLES

EXTERNAL THREAD



Nuts and washers are supplied



| MATERIAL | CODE |
|-----------------|------|
| ALUMINUM | AL |
| BRASS | BR |
| STAINLESS STEEL | SS |
| STEEL | ST |

| THREAD SIZE | THREAD CODE |
|-------------|-------------|
| 1/4-28 | 2528 |
| 5/16-24 | 3124 |

| LENGTH ℄ TO ℄ ±1/32 | LEG HEIGHT ±1/32 | BASIC PART NUMBER |
|---------------------------|------------------------|-------------------------|
| 4" | 1.430 | 1758 |
| 4-1/4" | | 1759 |
| 4-1/2" | | 1760 |
| 5" | | 1761 |
| 6" | | 1762 |
| 7" | 1763 | |
| 3" | 1.460 | 1764 |
| 3-1/2" | | 1765 |
| 4" | | 1766 |
| 4-1/4" | | 1767 |
| 5" | | 1768 |
| 6" | | 1769 |

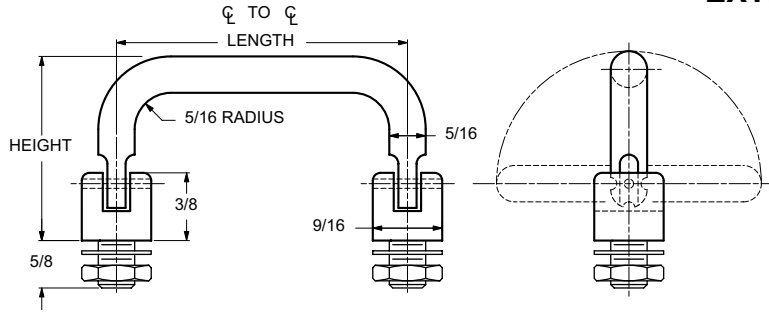
E35

| CODE | FINISH | CODE | FINISH |
|------|--|------|--|
| 00 | Plain — None | 21 | Iridite MIL-C-5541 — Clear |
| 01 | Passivate MIL-F-14072-E300 | 22 | Iridite MIL-C-5541 — Gold #14 |
| 02 | Caustic Etch | 31 | Cadmium QQ-P-416, CL 2 — Clear Chromate |
| 12 | Anodize MIL-A-8625C, Type II Sulphuric Hot Water Seal — Clear | 32 | Cadmium QQ-P-416, CL 2 — Color Chromate |
| 13 | Anodize MIL-A-8625C, Type II Sulphuric Dichromate Seal — Yellow Green | 34 | Zinc QQ-Z-325, Type II, CL 3 — Clear Chromate |
| 14 | Anodize MIL-A-8625C — Black | 36 | Zinc QQ-Z-325, Type II, CL 3 — Yellow Chromate |
| 15 | Semi-Frost Anodize — Clear | 51 | Black Oxide MIL-F-495 — Brass |
| 16 | Semi-Frost Anodize — Black | 52 | Black Oxide MIL-C-13924 — Stainless Steel |
| 17 | Satin Anodize — Clear | 61 | Nickel QQ-N-290 CL 1, Type VI KC |
| 18 | Satin Anodize — Black | 62 | Black Nickel |
| | | 71 | Chrome QQ-C-320 CL 1, Type 1 — Bright |
| | | 72 | Chrome QQ-C-320 CL 1, Type 1 — Satin |

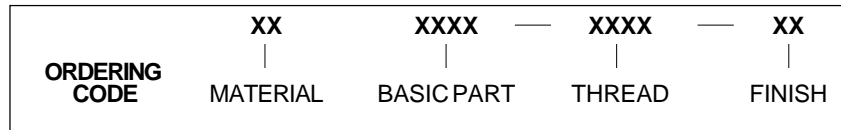


5/16 ROUND 180° THREE POSITION HANDLES

EXTERNAL THREAD



Nuts and washers are supplied



| MATERIAL | CODE |
|-----------------|------|
| ALUMINUM | AL |
| BRASS | BR |
| STAINLESS STEEL | SS |
| STEEL | ST |

| THREAD SIZE | THREAD CODE |
|-------------|-------------|
| 5/16-24 | 3124 |
| 3/8-24 | 3724 |

| LENGTH ℄ TO ℄ ±1/32 | LEG HEIGHT ±1/32 | BASIC PART NUMBER |
|---------------------------|------------------------|-------------------------|
| 4" | 1.430 | 1770 |
| 4-1/4" | | 1771 |
| 4-1/2" | | 1772 |
| 5" | | 1773 |
| 6" | | 1774 |
| 7" | | 1775 |
| 3" | 1.530 | 1776 |
| 3-1/2" | | 1777 |
| 4" | | 1778 |
| 4-1/4" | | 1779 |
| 4-1/2" | | 1780 |
| 5" | | 1781 |
| 6" | 1782 | |
| 3" | 1.850 | 1783 |
| 3-1/2" | | 1784 |
| 4" | | 1785 |
| 4-1/4" | | 1786 |
| 4-1/2" | | 1787 |
| 5" | | 1788 |
| 6" | 1789 | |

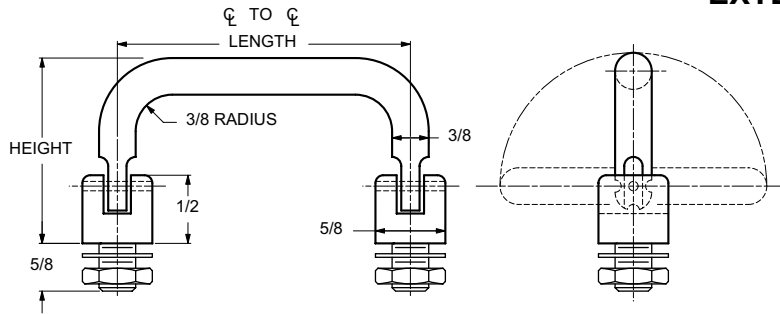
| CODE | FINISH | CODE | FINISH |
|------|--|------|--|
| 00 | Plain — None | 21 | Iridite MIL-C-5541 — Clear |
| 01 | Passivate MIL-F-14072-E300 | 22 | Iridite MIL-C-5541 — Gold #14 |
| 02 | Caustic Etch | 31 | Cadmium QQ-P-416, CL 2 — Clear Chromate |
| 12 | Anodize MIL-A-8625C, Type II Sulphuric Hot Water Seal — Clear | 32 | Cadmium QQ-P-416, CL 2 — Color Chromate |
| 13 | Anodize MIL-A-8625C, Type II Sulphuric Dichromate Seal — Yellow Green | 34 | Zinc QQ-Z-325, Type II, CL 3 — Clear Chromate |
| 14 | Anodize MIL-A-8625C — Black | 36 | Zinc QQ-Z-325, Type II, CL 3 — Yellow Chromate |
| 15 | Semi-Frost Anodize — Clear | 51 | Black Oxide MIL-F-495 — Brass |
| 16 | Semi-Frost Anodize — Black | 52 | Black Oxide MIL-C-13924 — Stainless Steel |
| 17 | Satin Anodize — Clear | 61 | Nickel QQ-N-290 CL 1, Type VI KC |
| 18 | Satin Anodize — Black | 62 | Black Nickel |
| | | 71 | Chrome QQ-C-320 CL 1, Type 1 — Bright |
| | | 72 | Chrome QQ-C-320 CL 1, Type 1 — Satin |

E36



3/8 ROUND 180° THREE POSITION HANDLES

EXTERNAL THREAD



Nuts and washers are supplied

| | | | | |
|----------------------|-----------|-------------|-------------|-----------|
| ORDERING CODE | XX | XXXX | XXXX | XX |
| | MATERIAL | BASIC PART | THREAD | FINISH |

| MATERIAL | CODE |
|-----------------|------|
| ALUMINUM | AL |
| BRASS | BR |
| STAINLESS STEEL | SS |
| STEEL | ST |

| THREAD SIZE | THREAD CODE |
|-------------|-------------|
| 5/16-24 | 3124 |
| 3/8-24 | 3724 |

| LENGTH ℄ TO ℄ ±1/32 | LEG HEIGHT ±1/32 | BASIC PART NUMBER |
|---------------------------|------------------------|-------------------------|
| 3" | 1.530 | 1790 |
| 3-1/2" | | 1791 |
| 4" | | 1792 |
| 4-1/4" | | 1793 |
| 4-1/2" | | 1794 |
| 5" | | 1795 |
| 6" | | 1796 |

| LENGTH ℄ TO ℄ ±1/32 | LEG HEIGHT ±1/32 | BASIC PART NUMBER |
|---------------------------|------------------------|-------------------------|
| 4" | 1.810 | 1797 |
| 4-1/4" | | 1798 |
| 4-1/2" | | 1799 |
| 5" | | 1800 |
| 6" | | 1801 |
| 3" | 1.850 | 1802 |
| 3-1/2" | | 1803 |
| 4" | | 1804 |
| 4-1/4" | | 1805 |
| 4-1/2" | | 1806 |
| 5" | | 1807 |
| 6" | | 1808 |
| 4" | 2.375 | 1809 |
| 4-1/4" | | 1810 |
| 4-1/2" | | 1811 |
| 5" | | 1812 |

| CODE | FINISH | CODE | FINISH |
|------|--|------|--|
| 00 | Plain — None | 21 | Iridite MIL-C-5541 — Clear |
| 01 | Passivate MIL-F-14072-E300 | 22 | Iridite MIL-C-5541 — Gold #14 |
| 02 | Caustic Etch | 31 | Cadmium QQ-P-416, CL 2 — Clear Chromate |
| 12 | Anodize MIL-A-8625C, Type II Sulphuric Hot Water Seal — Clear | 32 | Cadmium QQ-P-416, CL 2 — Color Chromate |
| 13 | Anodize MIL-A-8625C, Type II Sulphuric Dichromate Seal — Yellow Green | 34 | Zinc QQ-Z-325, Type II, CL 3 — Clear Chromate |
| 14 | Anodize MIL-A-8625C — Black | 36 | Zinc QQ-Z-325, Type II, CL 3 — Yellow Chromate |
| 15 | Semi-Frost Anodize — Clear | 51 | Black Oxide MIL-F-495 — Brass |
| 16 | Semi-Frost Anodize — Black | 52 | Black Oxide MIL-C-13924 — Stainless Steel |
| 17 | Satin Anodize — Clear | 61 | Nickel QQ-N-290 CL 1, Type VI KC |
| 18 | Satin Anodize — Black | 62 | Black Nickel |
| | | 71 | Chrome QQ-C-320 CL 1, Type 1 — Bright |
| | | 72 | Chrome QQ-C-320 CL 1, Type 1 — Satin |

E37