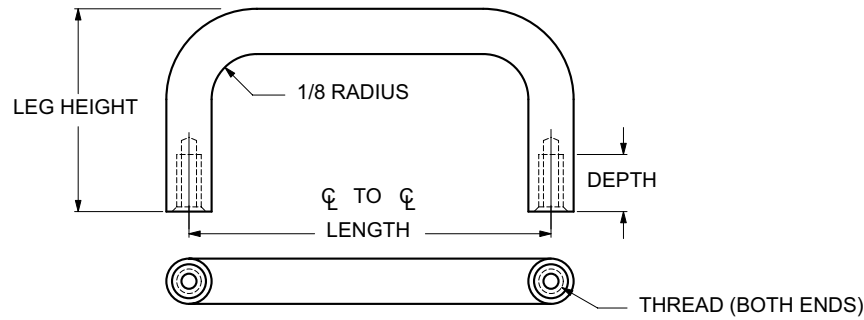




# 1/8 ROUND HANDLES INTERNAL THREAD



ORDERING CODE	XX	XXXX	XXXX	XX
	MATERIAL	BASIC PART	THREAD	FINISH

MATERIAL	CODE
ALUMINUM	AL
BRASS	BR
STAINLESS STEEL	SS
STEEL	ST

THREAD SIZE	CODE	THREAD DEPTH
2-56	0256	3/16

LENGTH Ø TO Ø ±1/32	LEG HEIGHT ±1/32	BASIC PART NUMBER
3/4	1/2	1000
13/16		1001
7/8		1002
1"		1003
1-1/4		1004
1-1/2		1005
2"	1006	
3/4	3/4	1007
13/16		1008
7/8		1009
1"		1010
1-1/4		1011
1-1/2		1012
2"	1013	

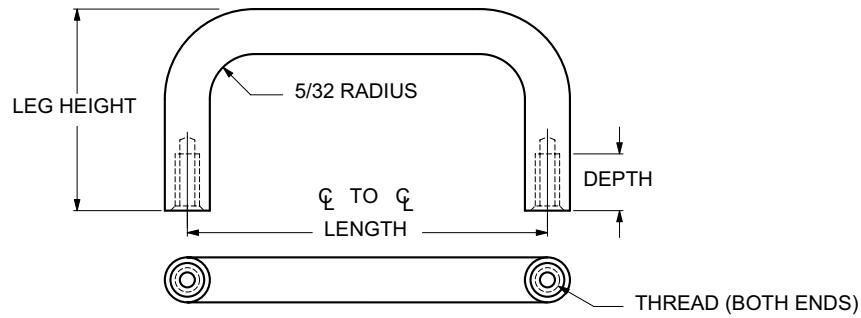
LENGTH Ø TO Ø ±1/32	LEG HEIGHT ±1/32	BASIC PART NUMBER
1"	1"	1014
1-1/4		1015
1-1/2		1016
1-3/4		1017
2"		1018
1"	1-1/4	1019
1-1/4		1020
1-1/2		1021
1-3/4		1022
2"	1023	
1"	1-1/2	1024
1-1/4		1025
1-1/2		1026
1-3/4		1027
2"		1028
1-1/4	2"	1029
1-1/2		1030
1-3/4		1031
2"		1032
2-1/2		1033
3"		1034

CODE	FINISH	CODE	FINISH
00	Plain — None	21	Iridite MIL-C-5541 — Clear
01	Passivate MIL-F-14072-E300	22	Iridite MIL-C-5541 — Gold #14
02	Caustic Etch	31	Cadmium QQ-P-416, CL 2 — Clear Chromate
12	Anodize MIL-A-8625C, Type II Sulphuric Hot Water Seal — Clear	32	Cadmium QQ-P-416, CL 2 — Color Chromate
13	Anodize MIL-A-8625C, Type II Sulphuric Dichromate Seal — Yellow Green	34	Zinc QQ-Z-325, Type II, CL 3 — Clear Chromate
14	Anodize MIL-A-8625C — Black	36	Zinc QQ-Z-325, Type II, CL 3 — Yellow Chromate
15	Semi-Frost Anodize — Clear	51	Black Oxide MIL-F-495 — Brass
16	Semi-Frost Anodize — Black	52	Black Oxide MIL-C-13924 — Stainless Steel
17	Satin Anodize — Clear	61	Nickel QQ-N-290 CL 1, Type VI KC
18	Satin Anodize — Black	62	Black Nickel
		71	Chrome QQ-C-320 CL 1, Type 1 — Bright
		72	Chrome QQ-C-320 CL 1, Type 1 — Satin

E3



# 5/32 ROUND HANDLES INTERNAL THREAD



ORDERING CODE	XX   MATERIAL	XXXX   BASIC PART	XXXX   THREAD	XX   FINISH
------------------	---------------------	-------------------------	---------------------	-------------------

MATERIAL	CODE
ALUMINUM	AL
BRASS	BR
STAINLESS STEEL	SS
STEEL	ST

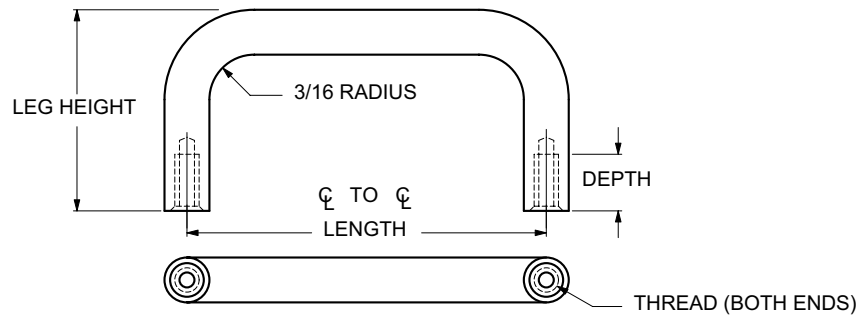
THREAD SIZE	CODE	THREAD DEPTH
2-56	0256	3/16
4-40	0440	1/4-3/8

LENGTH ϕ TO ϕ ±1/32	LEG HEIGHT ±1/32	BASIC PART NUMBER
1"	3/4	1035
1-1/4		1036
1-1/2		1037
2"		1038
2-1/2		1039
3"		1040
1"	1"	1041
1-1/4		1042
1-1/2		1043
1-3/4		1044
2"		1045
2-1/2		1046
3"		1047

CODE	FINISH	CODE	FINISH
00	Plain — None	21	Iridite MIL-C-5541 — Clear
01	Passivate MIL-F-14072-E300	22	Iridite MIL-C-5541 — Gold #14
02	Caustic Etch	31	Cadmium QQ-P-416, CL 2 — Clear Chromate
12	Anodize MIL-A-8625C, Type II Sulphuric Hot Water Seal — Clear	32	Cadmium QQ-P-416, CL 2 — Color Chromate
13	Anodize MIL-A-8625C, Type II Sulphuric Dichromate Seal — Yellow Green	34	Zinc QQ-Z-325, Type II, CL 3 — Clear Chromate
14	Anodize MIL-A-8625C — Black	36	Zinc QQ-Z-325, Type II, CL 3 — Yellow Chromate
15	Semi-Frost Anodize — Clear	51	Black Oxide MIL-F-495 — Brass
16	Semi-Frost Anodize — Black	52	Black Oxide MIL-C-13924 — Stainless Steel
17	Satin Anodize — Clear	61	Nickel QQ-N-290 CL 1, Type VI KC
18	Satin Anodize — Black	62	Black Nickel
		71	Chrome QQ-C-320 CL 1, Type 1 — Bright
		72	Chrome QQ-C-320 CL 1, Type 1 — Satin



# 3/16 ROUND HANDLES INTERNAL THREAD



ORDERING CODE	XX	XXXX	XXXX	XX
	MATERIAL	BASIC PART	THREAD	FINISH

MATERIAL	CODE
ALUMINUM	AL
BRASS	BR
STAINLESS STEEL	SS
STEEL	ST

THREAD SIZE	CODE	THREAD DEPTH
4-40	0440	1/4
6-32	0632	5/16-3/8

LENGTH ¢ TO ¢ ±1/32	LEG HEIGHT ±1/32	BASIC PART NUMBER
1-1/2	5/8	1048
1-3/4		1049
2"		1050
3"		1051
4"		1052
5"	1053	
1"	3/4	1054
1-1/4		1055
1-1/2		1056
1-3/4		1057
2"		1058
3"		1059
4"		1060
5"		1061

LENGTH ¢ TO ¢ ±1/32	LEG HEIGHT ±1/32	BASIC PART NUMBER
1"	7/8	1062
1-1/4		1063
1-1/2		1064
1-3/4		1065
2"		1066
3"		1067
4"	1068	
5"	1069	
1"	1"	1070
1-1/4		1071
1-1/2		1072
1-3/4		1073
2"		1074
3"		1075
4"		1076
5"		1077
1"	1-1/8	1078
1-1/4		1079
1-1/2		1080
1-3/4		1081
2"		1082
3"		1083
4"		1084
5"		1085

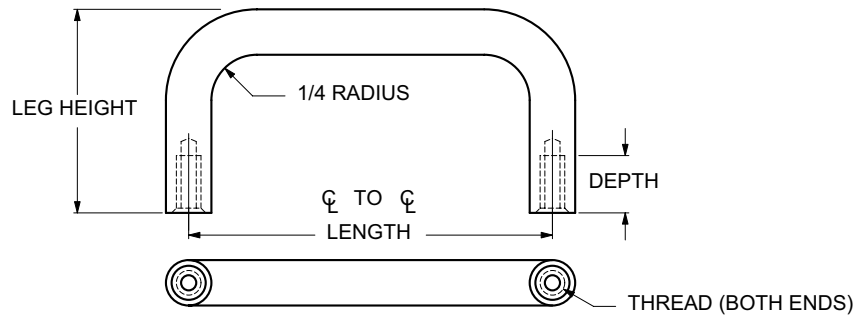
LENGTH ¢ TO ¢ ±1/32	LEG HEIGHT ±1/32	BASIC PART NUMBER
1"	1-1/4	1086
1-1/4		1087
1-1/2		1088
1-3/4		1089
2"		1090
3"	1091	
4"	1092	
5"	1093	
1"	1-1/2	1094
1-1/4		1095
1-1/2		1096
1-3/4		1097
2"		1098
3"		1099
4"		1100
5"		1101

CODE	FINISH	CODE	FINISH
00	Plain — None	21	Iridite MIL-C-5541 — Clear
01	Passivate MIL-F-14072-E300	22	Iridite MIL-C-5541 — Gold #14
02	Caustic Etch	31	Cadmium QQ-P-416, CL 2 — Clear Chromate
12	Anodize MIL-A-8625C, Type II Sulphuric Hot Water Seal — Clear	32	Cadmium QQ-P-416, CL 2 — Color Chromate
13	Anodize MIL-A-8625C, Type II Sulphuric Dichromate Seal — Yellow Green	34	Zinc QQ-Z-325, Type II, CL 3 — Clear Chromate
14	Anodize MIL-A-8625C — Black	36	Zinc QQ-Z-325, Type II, CL 3 — Yellow Chromate
15	Semi-Frost Anodize — Clear	51	Black Oxide MIL-F-495 — Brass
16	Semi-Frost Anodize — Black	52	Black Oxide MIL-C-13924 — Stainless Steel
17	Satin Anodize — Clear	61	Nickel QQ-N-290 CL 1, Type VI KC
18	Satin Anodize — Black	62	Black Nickel
		71	Chrome QQ-C-320 CL 1, Type 1 — Bright
		72	Chrome QQ-C-320 CL 1, Type 1 — Satin

E5



# 1/4 ROUND HANDLES INTERNAL THREAD



<b>ORDERING CODE</b>	<b>XX</b>	<b>XXXX</b>	<b>XXXX</b>	<b>XX</b>
	MATERIAL	BASIC PART	THREAD	FINISH

MATERIAL	CODE
ALUMINUM	AL
BRASS	BR
STAINLESS STEEL	SS
STEEL	ST

THREAD SIZE	CODE	THREAD DEPTH
6-32	0632	3/8
8-32	0832	7/16-9/16

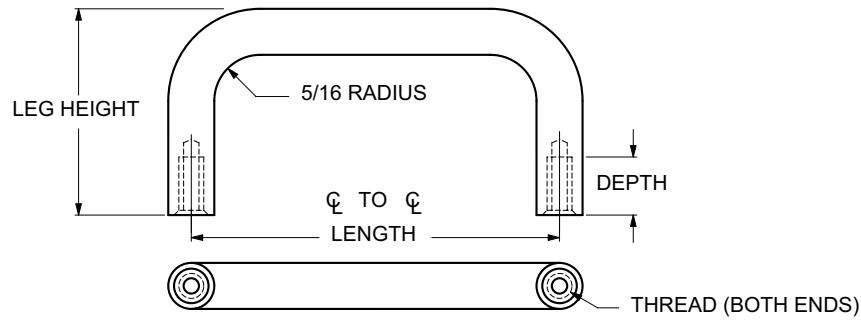
LENGTH CL TO CL ±1/32	LEG HEIGHT ±1/32	BASIC PART NUMBER
1-1/8		1102
1-1/4		1103
1-1/2		1104
1-3/4		1105
2"	1"	1106
2-1/4		1107
2-1/2		1108
2-3/4		1109
3"		1110
4"		1111
5"		1112

LENGTH CL TO CL ±1/32	LEG HEIGHT ±1/32	BASIC PART NUMBER
1-1/2		1113
1-3/4		1114
2"		1115
2-1/4	1-1/4	1116
2-1/2		1117
2-3/4		1118
3"		1119
4"		1120
5"		1121
1-1/2		1122
1-3/4		1123
2"		1124
2-1/4		1125
2-1/2		1126
2-3/4	1-1/2	1127
3"		1128
3-1/2		1129
4"		1130
4-1/4		1131
4-1/2		1132
5"		1133
6"		1134
3"		1135
4"	2"	1136
5"		1137
6"		1138

CODE	FINISH	CODE	FINISH
00	Plain — None	21	Iridite MIL-C-5541 — Clear
01	Passivate MIL-F-14072-E300	22	Iridite MIL-C-5541 — Gold #14
02	Caustic Etch	31	Cadmium QQ-P-416, CL 2 — Clear Chromate
12	Anodize MIL-A-8625C, Type II Sulphuric Hot Water Seal — Clear	32	Cadmium QQ-P-416, CL 2 — Color Chromate
13	Anodize MIL-A-8625C, Type II Sulphuric Dichromate Seal — Yellow Green	34	Zinc QQ-Z-325, Type II, CL 3 — Clear Chromate
14	Anodize MIL-A-8625C — Black	36	Zinc QQ-Z-325, Type II, CL 3 — Yellow Chromate
15	Semi-Frost Anodize — Clear	51	Black Oxide MIL-F-495 — Brass
16	Semi-Frost Anodize — Black	52	Black Oxide MIL-C-13924 — Stainless Steel
17	Satin Anodize — Clear	61	Nickel QQ-N-290 CL 1, Type VI KC
18	Satin Anodize — Black	62	Black Nickel
		71	Chrome QQ-C-320 CL 1, Type 1 — Bright
		72	Chrome QQ-C-320 CL 1, Type 1 — Satin



# 5/16 ROUND HANDLES INTERNAL THREAD



ORDERING CODE	XX	XXXX	XXXX	XX
	MATERIAL	BASIC PART	THREAD	FINISH

MATERIAL	CODE	LENGTH ¢ TO ¢ ±1/32	LEG HEIGHT ±1/32	BASIC PART NUMBER	LENGTH ¢ TO ¢ ±1/32	LEG HEIGHT ±1/32	BASIC PART NUMBER	
ALUMINUM	AL	2"	1-5/16	1158	5-1/2	1-1/2	1189	
BRASS	BR	2-1/4		1159	5-3/4		1190	
STAINLESS STEEL	SS	2-1/2		1160	6"		1191	
STEEL	ST	2-3/4		1161	6-7/16		1192	
		2-13/16		1162	6-1/2		1193	
		3"		1163	7"		1194	
		4"	1-3/8	1164	3"	1-3/4	1195	
		4-1/4		1165			3-1/2	1196
		2"		1166			4"	1197
		2-1/2		1167			4-1/4	1198
		3"		1168			4-1/2	1199
		4"		1169			4-9/16	1200
		4-1/4	1-1/2	1170	4-5/8	1-3/4	1201	
		5"		1171	4-3/4		1202	
		2"		1172	5"		1203	
		2-1/8		1173	5-1/8		1204	
		2-1/4		1174	5-1/4		1205	
		2-3/8		1175	5-1/2		1206	
		2-1/2	1-1/8	1176	5-3/4	1-1/4	1207	
		2-3/4		1177	6"		1208	
		3"		1178	6-1/4		1209	
		3-1/8		1179	6-7/16		1210	
		3-1/4		1180	6-1/2		1211	
		3-1/2		1181	6-3/4		1212	
		4"	1-1/4	1182	7"	1-1/4	1213	
		4-1/4		1183				
		4-1/2		1184				
		4-9/16		1185				
		5"		1186				
		5-1/4		1187				
		2"		1188				
		2-1/2						
		3"						
		3-1/2						
		4"						
		2"						
		2-1/2						
		3"						
		3-1/2						
		4"						

THREAD SIZE	CODE	THREAD DEPTH
8-32	0832	7/16
10-32	1032	5/16-5/8

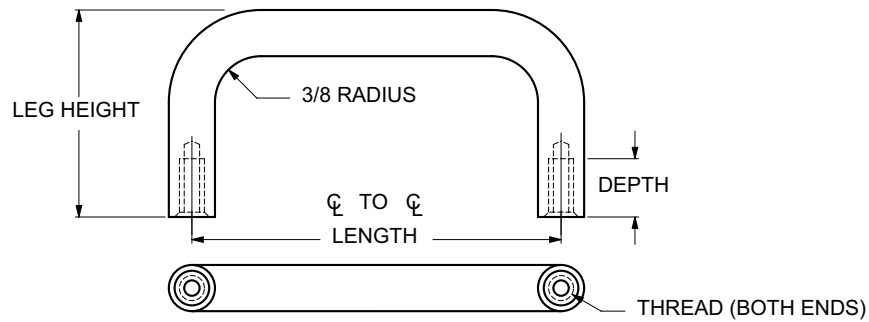
LENGTH ¢ TO ¢ ±1/32	LEG HEIGHT ±1/32	BASIC PART NUMBER
2"	1"	1139
2-1/2		1140
3"		1141
3-1/2		1142
4"		1143
4-1/4		1144
4-1/2	1-1/8	1145
5"		1146
6"		1147
2"		1148
3"		1149
4"		1150
4-1/4	1-1/4	1151
4-9/16		1152
2"		1153
2-1/2		1154
3"		1155
3-1/2		1156
4"	1157	

CODE	FINISH	CODE	FINISH
00	Plain — None	21	Iridite MIL-C-5541 — Clear
01	Passivate MIL-F-14072-E300	22	Iridite MIL-C-5541 — Gold #14
02	Caustic Etch	31	Cadmium QQ-P-416, CL 2 — Clear Chromate
12	Anodize MIL-A-8625C, Type II Sulphuric Hot Water Seal — Clear	32	Cadmium QQ-P-416, CL 2 — Color Chromate
13	Anodize MIL-A-8625C, Type II Sulphuric Dichromate Seal — Yellow Green	34	Zinc QQ-Z-325, Type II, CL 3 — Clear Chromate
14	Anodize MIL-A-8625C — Black	36	Zinc QQ-Z-325, Type II, CL 3 — Yellow Chromate
15	Semi-Frost Anodize — Clear	51	Black Oxide MIL-F-495 — Brass
16	Semi-Frost Anodize — Black	52	Black Oxide MIL-C-13924 — Stainless Steel
17	Satin Anodize — Clear	61	Nickel QQ-N-290 CL 1, Type VI KC
18	Satin Anodize — Black	62	Black Nickel
		71	Chrome QQ-C-320 CL 1, Type 1 — Bright
		72	Chrome QQ-C-320 CL 1, Type 1 — Satin

E7



# 3/8 ROUND HANDLES INTERNAL THREAD



ORDERING CODE	XX	XXXX	XXXX	XX
	MATERIAL	BASIC PART	THREAD	FINISH

MATERIAL	CODE
ALUMINUM	AL
BRASS	BR
STAINLESS STEEL	SS
STEEL	ST

THREAD SIZE	CODE	THREAD DEPTH	LENGTH $\phi$ TO $\phi$ $\pm 1/32$	LEG HEIGHT $\pm 1/32$	BASIC PART NUMBER
8-32	0832	7/16	2"	1-3/4	1228
10-32	1032	7/16-5/8	2-1/2		1229
1/4-20	2520	3/8-5/8	3"		1230
			3-1/2		1231
			4"		1232
			4-1/4		1233
			4-1/2		1234
			5"		1235
			5-1/4		1236
			5-1/2		1237
			5-3/4	1238	
			6"	1239	
			6-1/2	1240	
			7"	1241	
			3"	1-7/8	1242
			4"		1243
			4-1/4		1244
			4-1/2		1245
			5"		1246
			6"		1247
LENGTH $\phi$ TO $\phi$ $\pm 1/32$	LEG HEIGHT $\pm 1/32$	BASIC PART NUMBER			
2"	1-5/16	1214			
3"		1215			
4"		1216			
5"		1217			
6"		1218			
7"		1219			
2-1/2		1-1/2	1220		
3"	1221				
4"	1222				
4-1/4	1223				
4-1/2	1224				
5"	1225				
6"	1226				
7"	1227				

CODE	FINISH	CODE	FINISH
00	Plain — None	21	Iridite MIL-C-5541 — Clear
01	Passivate MIL-F-14072-E300	22	Iridite MIL-C-5541 — Gold #14
02	Caustic Etch	31	Cadmium QQ-P-416, CL 2 — Clear Chromate
12	Anodize MIL-A-8625C, Type II Sulphuric Hot Water Seal — Clear	32	Cadmium QQ-P-416, CL 2 — Color Chromate
13	Anodize MIL-A-8625C, Type II Sulphuric Dichromate Seal — Yellow Green	34	Zinc QQ-Z-325, Type II, CL 3 — Clear Chromate
14	Anodize MIL-A-8625C — Black	36	Zinc QQ-Z-325, Type II, CL 3 — Yellow Chromate
15	Semi-Frost Anodize — Clear	51	Black Oxide MIL-F-495 — Brass
16	Semi-Frost Anodize — Black	52	Black Oxide MIL-C-13924 — Stainless Steel
17	Satin Anodize — Clear	61	Nickel QQ-N-290 CL 1, Type VI KC
18	Satin Anodize — Black	62	Black Nickel
		71	Chrome QQ-C-320 CL 1, Type 1 — Bright
		72	Chrome QQ-C-320 CL 1, Type 1 — Satin