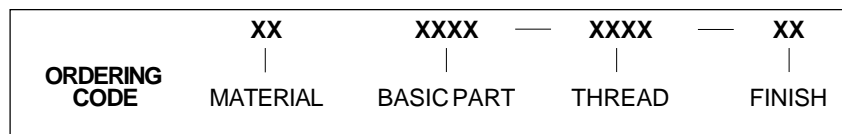
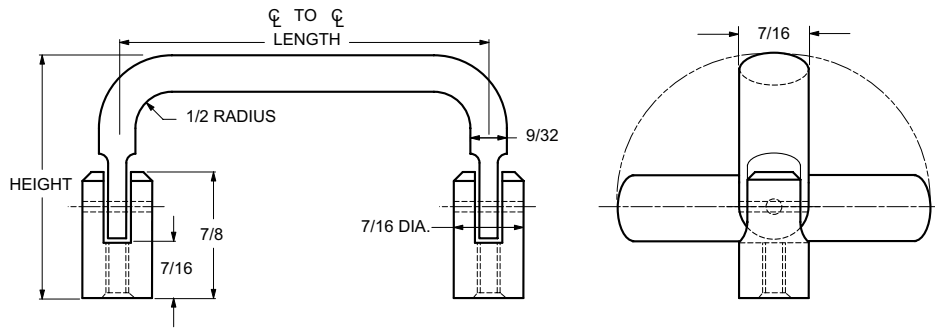




# 7/16 X 9/32 OVAL 180° INFINITE POSITION HANDLES

## INTERNAL THREAD



MATERIAL	CODE
ALUMINUM	<b>AL</b>
BRASS	<b>BR</b>
STAINLESS STEEL	<b>SS</b>

THREAD SIZE	THREAD CODE
8-32	<b>0832</b>
10-32	<b>1032</b>

LENGTH ℄ TO ℄ ±1/32	LEG HEIGHT ±1/32	BASIC PART NUMBER
2"	2"	<b>1901</b>
3"		<b>1902</b>
4"		<b>1903</b>
5"		<b>1904</b>
6"		<b>1905</b>
2"	2.500	<b>1906</b>
3"		<b>1907</b>
4"		<b>1908</b>
5"		<b>1909</b>
2"	3"	<b>1910</b>
3"		<b>1911</b>
4"		<b>1912</b>

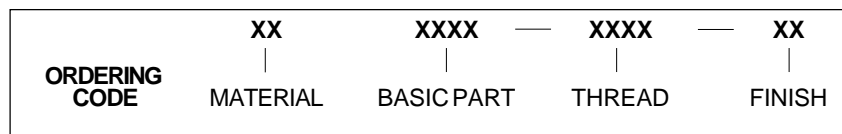
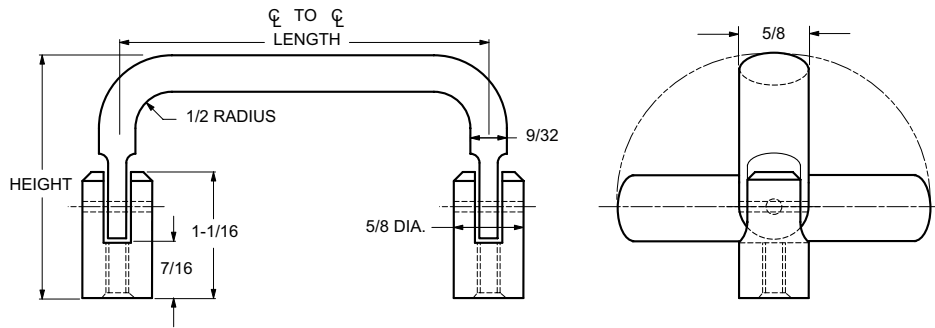
CODE	FINISH	CODE	FINISH
<b>00</b>	Plain — None	<b>21</b>	Iridite MIL-C-5541 — Clear
<b>01</b>	Passivate MIL-F-14072-E300	<b>22</b>	Iridite MIL-C-5541 — Gold #14
<b>02</b>	Caustic Etch	<b>31</b>	Cadmium QQ-P-416, CL 2 — Clear Chromate
<b>12</b>	Anodize MIL-A-8625C, Type II Sulphuric Hot Water Seal — Clear	<b>32</b>	Cadmium QQ-P-416, CL 2 — Color Chromate
<b>13</b>	Anodize MIL-A-8625C, Type II Sulphuric Dichromate Seal — Yellow Green	<b>34</b>	Zinc QQ-Z-325, Type II, CL 3 — Clear Chromate
<b>14</b>	Anodize MIL-A-8625C — Black	<b>36</b>	Zinc QQ-Z-325, Type II, CL 3 — Yellow Chromate
<b>15</b>	Semi-Frost Anodize — Clear	<b>51</b>	Black Oxide MIL-F-495 — Brass
<b>16</b>	Semi-Frost Anodize — Black	<b>52</b>	Black Oxide MIL-C-13924 — Stainless Steel
<b>17</b>	Satin Anodize — Clear	<b>61</b>	Nickel QQ-N-290 CL 1, Type VI KC
<b>18</b>	Satin Anodize — Black	<b>62</b>	Black Nickel
		<b>71</b>	Chrome QQ-C-320 CL 1, Type 1 — Bright
		<b>72</b>	Chrome QQ-C-320 CL 1, Type 1 — Satin

**E42**



# 5/8 X 9/32 OVAL 180° INFINITE POSITION HANDLES

INTERNAL THREAD



MATERIAL	CODE
ALUMINUM	<b>AL</b>
BRASS	<b>BR</b>
STAINLESS STEEL	<b>SS</b>

THREAD SIZE	THREAD CODE
8-32	<b>0832</b>
10-32	<b>1032</b>

LENGTH ℄ TO ℄ ±1/32	LEG HEIGHT ±1/32	BASIC PART NUMBER
2"	2"	<b>1913</b>
3"		<b>1914</b>
4"		<b>1915</b>
5"		<b>1916</b>
6"		<b>1917</b>
2"	2.500	<b>1918</b>
3"		<b>1919</b>
4"		<b>1920</b>
5"		<b>1921</b>
2"	3"	<b>1922</b>
3"		<b>1923</b>
4"		<b>1924</b>

**E43**

CODE	FINISH	CODE	FINISH
<b>00</b>	Plain — None	<b>21</b>	Iridite MIL-C-5541 — Clear
<b>01</b>	Passivate MIL-F-14072-E300	<b>22</b>	Iridite MIL-C-5541 — Gold #14
<b>02</b>	Caustic Etch	<b>31</b>	Cadmium QQ-P-416, CL 2 — Clear Chromate
<b>12</b>	Anodize MIL-A-8625C, Type II Sulphuric Hot Water Seal — Clear	<b>32</b>	Cadmium QQ-P-416, CL 2 — Color Chromate
<b>13</b>	Anodize MIL-A-8625C, Type II Sulphuric Dichromate Seal — Yellow Green	<b>34</b>	Zinc QQ-Z-325, Type II, CL 3 — Clear Chromate
<b>14</b>	Anodize MIL-A-8625C — Black	<b>36</b>	Zinc QQ-Z-325, Type II, CL 3 — Yellow Chromate
<b>15</b>	Semi-Frost Anodize — Clear	<b>51</b>	Black Oxide MIL-F-495 — Brass
<b>16</b>	Semi-Frost Anodize — Black	<b>52</b>	Black Oxide MIL-C-13924 — Stainless Steel
<b>17</b>	Satin Anodize — Clear	<b>61</b>	Nickel QQ-N-290 CL 1, Type VI KC
<b>18</b>	Satin Anodize — Black	<b>62</b>	Black Nickel
		<b>71</b>	Chrome QQ-C-320 CL 1, Type 1 — Bright
		<b>72</b>	Chrome QQ-C-320 CL 1, Type 1 — Satin