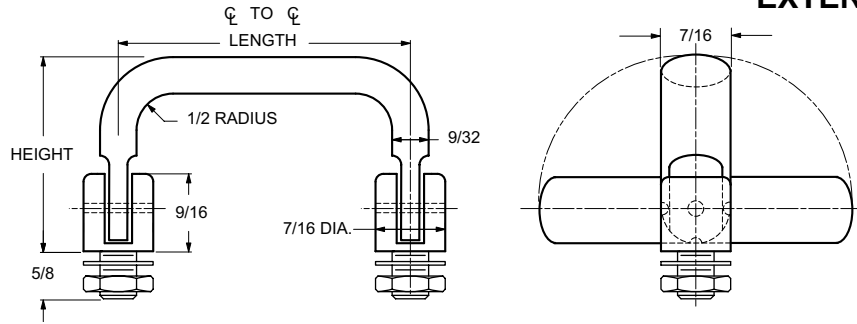




7/16 X 9/32 OVAL 180° 3 POSITION HANDLES

EXTERNAL THREAD



Nuts and washers are supplied

| | | | | |
|----------------------|-----------|-------------|-------------|-----------|
| ORDERING CODE | XX | XXXX | XXXX | XX |
| | MATERIAL | BASIC PART | THREAD | FINISH |

| MATERIAL | CODE |
|-----------------|------|
| ALUMINUM | AL |
| BRASS | BR |
| STAINLESS STEEL | SS |

| THREAD SIZE | THREAD CODE |
|-------------|-------------|
| 5/16-24 | 3124 |
| 3/8-24 | 3724 |

| LENGTH ¢ TO ¢ ±1/32 | LEG HEIGHT ±1/32 | BASIC PART NUMBER |
|---------------------------|------------------------|-------------------------|
| 3" | 1.695 | 1857 |
| 4" | | 1858 |
| 4-1/4" | | 1859 |
| 4-1/2" | | 1860 |
| 5" | | 1861 |
| 6" | | 1862 |

| LENGTH ¢ TO ¢ ±1/32 | LEG HEIGHT ±1/32 | BASIC PART NUMBER |
|---------------------------|------------------------|-------------------------|
| 3" | 1.791 | 1863 |
| 4" | | 1864 |
| 4-1/4" | | 1865 |
| 4-1/2" | | 1866 |
| 5" | | 1867 |
| 6" | | 1868 |
| 3" | 1.843 | 1869 |
| 4" | | 1870 |
| 4-1/4" | | 1871 |
| 4-1/2" | | 1872 |
| 5" | | 1873 |
| 3" | 2.125 | 1874 |
| 4" | | 1875 |
| 4-1/4" | | 1876 |
| 4-1/2" | | 1877 |
| 5" | | 1878 |

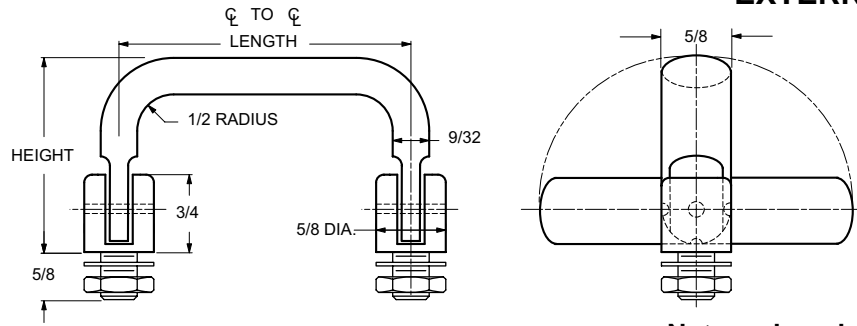
| CODE | FINISH | CODE | FINISH |
|------|--|------|--|
| 00 | Plain — None | 21 | Iridite MIL-C-5541 — Clear |
| 01 | Passivate MIL-F-14072-E300 | 22 | Iridite MIL-C-5541 — Gold #14 |
| 02 | Caustic Etch | 31 | Cadmium QQ-P-416, CL 2 — Clear Chromate |
| 12 | Anodize MIL-A-8625C, Type II Sulphuric Hot Water Seal — Clear | 32 | Cadmium QQ-P-416, CL 2 — Color Chromate |
| 13 | Anodize MIL-A-8625C, Type II Sulphuric Dichromate Seal — Yellow Green | 34 | Zinc QQ-Z-325, Type II, CL 3 — Clear Chromate |
| 14 | Anodize MIL-A-8625C — Black | 36 | Zinc QQ-Z-325, Type II, CL 3 — Yellow Chromate |
| 15 | Semi-Frost Anodize — Clear | 51 | Black Oxide MIL-F-495 — Brass |
| 16 | Semi-Frost Anodize — Black | 52 | Black Oxide MIL-C-13924 — Stainless Steel |
| 17 | Satin Anodize — Clear | 61 | Nickel QQ-N-290 CL 1, Type VI KC |
| 18 | Satin Anodize — Black | 62 | Black Nickel |
| | | 71 | Chrome QQ-C-320 CL 1, Type 1 — Bright |
| | | 72 | Chrome QQ-C-320 CL 1, Type 1 — Satin |

E40



5/8 X 9/32 OVAL 180° 3 POSITION HANDLES

EXTERNAL THREAD



Nuts and washers are supplied

| | | | | |
|----------------------|-----------|-------------|-------------|-----------|
| ORDERING CODE | XX | XXXX | XXXX | XX |
| | MATERIAL | BASIC PART | THREAD | FINISH |

| MATERIAL | CODE |
|-----------------|------|
| ALUMINUM | AL |
| BRASS | BR |
| STAINLESS STEEL | SS |

| THREAD SIZE | THREAD CODE |
|-------------|-------------|
| 5/16-24 | 3124 |
| 3/8-24 | 3724 |

| LENGTH ℄ TO ℄ ±1/32 | LEG HEIGHT ±1/32 | BASIC PART NUMBER |
|---------------------------|------------------------|-------------------------|
| 3" | 1.695 | 1879 |
| 4" | | 1880 |
| 4-1/4" | | 1881 |
| 4-1/2" | | 1882 |
| 5" | | 1883 |
| 6" | | 1884 |

| LENGTH ℄ TO ℄ ±1/32 | LEG HEIGHT ±1/32 | BASIC PART NUMBER |
|---------------------------|------------------------|-------------------------|
| 3" | 1.791 | 1885 |
| 4" | | 1886 |
| 4-1/4" | | 1887 |
| 4-1/2" | | 1888 |
| 5" | | 1889 |
| 6" | | 1890 |
| 3" | 1.843 | 1891 |
| 4" | | 1892 |
| 4-1/4" | | 1893 |
| 4-1/2" | | 1894 |
| 5" | | 1895 |
| 3" | 2.125 | 1896 |
| 4" | | 1897 |
| 4-1/4" | | 1898 |
| 4-1/2" | | 1899 |
| 5" | | 1900 |

| CODE | FINISH | CODE | FINISH |
|------|--|------|--|
| 00 | Plain — None | 21 | Iridite MIL-C-5541 — Clear |
| 01 | Passivate MIL-F-14072-E300 | 22 | Iridite MIL-C-5541 — Gold #14 |
| 02 | Caustic Etch | 31 | Cadmium QQ-P-416, CL 2 — Clear Chromate |
| 12 | Anodize MIL-A-8625C, Type II Sulphuric Hot Water Seal — Clear | 32 | Cadmium QQ-P-416, CL 2 — Color Chromate |
| 13 | Anodize MIL-A-8625C, Type II Sulphuric Dichromate Seal — Yellow Green | 34 | Zinc QQ-Z-325, Type II, CL 3 — Clear Chromate |
| 14 | Anodize MIL-A-8625C — Black | 36 | Zinc QQ-Z-325, Type II, CL 3 — Yellow Chromate |
| 15 | Semi-Frost Anodize — Clear | 51 | Black Oxide MIL-F-495 — Brass |
| 16 | Semi-Frost Anodize — Black | 52 | Black Oxide MIL-C-13924 — Stainless Steel |
| 17 | Satin Anodize — Clear | 61 | Nickel QQ-N-290 CL 1, Type VI KC |
| 18 | Satin Anodize — Black | 62 | Black Nickel |
| | | 71 | Chrome QQ-C-320 CL 1, Type 1 — Bright |
| | | 72 | Chrome QQ-C-320 CL 1, Type 1 — Satin |

E41