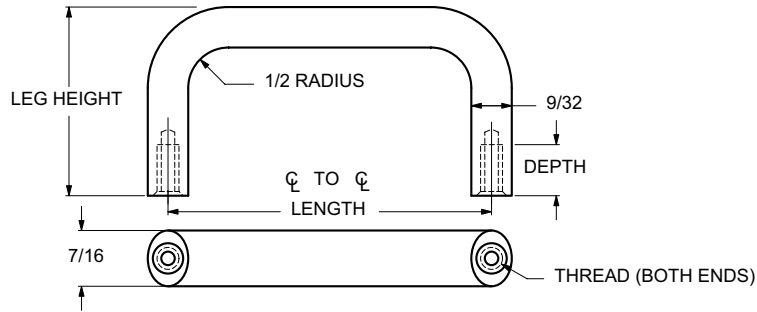




7/16 X 9/32 OVAL HANDLES INTERNAL THREAD



ORDERING CODE	XX	XXXX	XXXX	XX
	MATERIAL	BASIC PART	THREAD	FINISH

MATERIAL	CODE
ALUMINUM	AL
BRASS	BR
STAINLESS STEEL	SS

THREAD SIZE	CODE	THREAD DEPTH
8-32	0832	5/16-1/2
10-24	1024	5/16-5/8
10-32	1032	5/16-5/8

LENGTH ¢ TO ¢ ±1/32	LEG HEIGHT ±1/32	BASIC PART NUMBER
2"	1"	1317
2-1/2"		1318
3"		1319
4"		1320
4-1/4"		1321
4-1/2"		1322
4-9/16"		1323
5"		1324
6"		1325
6-7/16"		1326

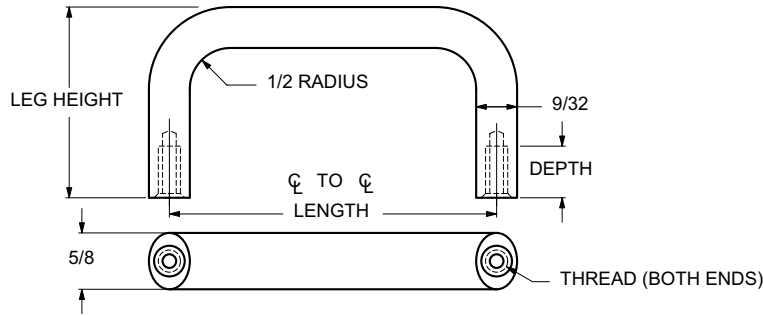
LENGTH ¢ TO ¢ ±1/32	LEG HEIGHT ±1/32	BASIC PART NUMBER
2"	1-9/32	1327
2-1/4"		1328
2-1/2"		1329
3"		1330
3-1/2"		1331
4"		1332
4-1/4"		1333
4-1/2"		1334
4-9/16"	1-1/2	1335
6"		1336
2"		1337
2-1/4"		1338
2-1/2"		1339
3"		1340
3-1/2"		1341
4"		1342
4-1/4"		1343
4-1/2"		1344
4-9/16"	1345	
5"	1346	
6"	1347	

CODE	FINISH	CODE	FINISH
00	Plain — None	21	Iridite MIL-C-5541 — Clear
01	Passivate MIL-F-14072-E300	22	Iridite MIL-C-5541 — Gold #14
02	Caustic Etch	31	Cadmium QQ-P-416, CL 2 — Clear Chromate
12	Anodize MIL-A-8625C, Type II Sulphuric Hot Water Seal — Clear	32	Cadmium QQ-P-416, CL 2 — Color Chromate
13	Anodize MIL-A-8625C, Type II Sulphuric Dichromate Seal — Yellow Green	34	Zinc QQ-Z-325, Type II, CL 3 — Clear Chromate
14	Anodize MIL-A-8625C — Black	36	Zinc QQ-Z-325, Type II, CL 3 — Yellow Chromate
15	Semi-Frost Anodize — Clear	51	Black Oxide MIL-F-495 — Brass
16	Semi-Frost Anodize — Black	52	Black Oxide MIL-C-13924 — Stainless Steel
17	Satin Anodize — Clear	61	Nickel QQ-N-290 CL 1, Type VI KC
18	Satin Anodize — Black	62	Black Nickel
		71	Chrome QQ-C-320 CL 1, Type 1 — Bright
		72	Chrome QQ-C-320 CL 1, Type 1 — Satin

E13



5/8 X 9/32 OVAL HANDLES INTERNAL THREAD



ORDERING CODE	XX	XXXX	XXXX	XX
	MATERIAL	BASIC PART	THREAD	FINISH

MATERIAL	CODE
ALUMINUM	AL
BRASS	BR
STAINLESS STEEL	SS

THREAD SIZE	CODE	THREAD DEPTH
8-32	0832	5/16-5/8
10-24	1024	5/16-5/8
10-32	1032	5/16-5/8

LENGTH ¢ TO ¢ ±1/32	LEG HEIGHT ±1/32	BASIC PART NUMBER
2-1/2	1"	1348
3"		1349
4"		1350
4-1/4		1351
4-1/2		1352
4-9/16		1353
5"		1354
6"	1355	
6-7/16	1356	
2-1/2	1-9/32	1357
3"		1358
4"		1359
4-1/4		1360
4-1/2		1361
4-9/16		1362
5"		1363
6"		1364
6-7/16	1365	

LENGTH ¢ TO ¢ ±1/32	LEG HEIGHT ±1/32	BASIC PART NUMBER
2-1/2	1-1/2	1366
3"		1367
4"		1368
4-1/4		1369
4-1/2		1370
4-9/16	1-3/4	1371
5"		1372
6"		1373
6-7/16		1374
7"		1375
3"		1376
4"		1377
4-1/4	1378	
4-1/2	1379	
4-9/16	1380	
5"	1381	
5-1/2	1382	
6"	1383	
6-7/16	1384	
7"	1385	

CODE	FINISH	CODE	FINISH
00	Plain — None	21	Iridite MIL-C-5541 — Clear
01	Passivate MIL-F-14072-E300	22	Iridite MIL-C-5541 — Gold #14
02	Caustic Etch	31	Cadmium QQ-P-416, CL 2 — Clear Chromate
12	Anodize MIL-A-8625C, Type II Sulphuric Hot Water Seal — Clear	32	Cadmium QQ-P-416, CL 2 — Color Chromate
13	Anodize MIL-A-8625C, Type II Sulphuric Dichromate Seal — Yellow Green	34	Zinc QQ-Z-325, Type II, CL 3 — Clear Chromate
14	Anodize MIL-A-8625C — Black	36	Zinc QQ-Z-325, Type II, CL 3 — Yellow Chromate
15	Semi-Frost Anodize — Clear	51	Black Oxide MIL-F-495 — Brass
16	Semi-Frost Anodize — Black	52	Black Oxide MIL-C-13924 — Stainless Steel
17	Satin Anodize — Clear	61	Nickel QQ-N-290 CL 1, Type VI KC
18	Satin Anodize — Black	62	Black Nickel
		71	Chrome QQ-C-320 CL 1, Type 1 — Bright
		72	Chrome QQ-C-320 CL 1, Type 1 — Satin