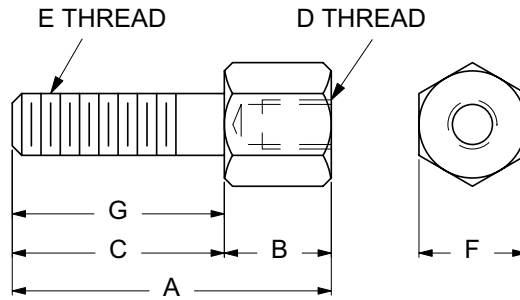




FEMALE SCREW LOCKS



STYLES 2 THRU 4

ORDERING CODE	XX MATERIAL	XXXX BASIC PART NUMBER	XX FINISH
---------------	----------------	---------------------------	--------------

MATERIAL	CODE
*STEEL	ST
STAINLESS STEEL	SS
BRASS	BR

BASIC PART NUMBERS			STYLE	A (REF.) OVERALL LENGTH	B BODY LENGTH	C MALE LENGTH	D FEMALE THREAD	E MALE THREAD	F ACROSS FLATS	G MALE THREAD LENGTH
SCREW LOCK ONLY	SCREW LOCK ASS'Y KIT	SCREW LOCK ASS'Y BULK								
9620	9621	9622	2	.50	.19	.29	2-56	2-56	.12	.20
9631	9632	9633	3	1.00	.25	.75	4-40	4-40	.25	.43
9634	9635	9636	4	.65	.25	.40	4-40	4-40	.25	.25

CODE	FINISH	CODE	FINISH
00	Plain — None	35	Zinc ASTMB633, Type I, Fe/Zn 8 — No Chromate
01	Passivate MIL-F-140720-E300	36	Zinc ASTMB633, Type II, Fe/Zn 8 — Yellow Chromate
02	Caustic Etch	43	Bright Tin — MIL-T-10727
03	Bright Dip — Brass	50	Black Oxide MIL-C-13924 — Steel
31	Cadmium QQ-P-416, CL 2 — Clear Chromate	51	Black Oxide MIL-F-495 — Brass
32	Cadmium QQ-P-416, CL 2, Type II — Yellow Chromate	52	Black Oxide MIL-C-13924 — Stainless Steel
33	Zinc, ASTMB633, Type II, CL 3 — Black Chromate	61	Nickel QQ-N-290 CL 1, Type VI KC
34	Zinc ASTMB633, Type III, Fe/Zn 8 — Clear Chromate	63	Ductile, Nickel — QQ-N-290



STYLE 2



STYLE 3



STYLE 4

NOTES:

- See styles which illustrate components of each screw lock assembly.
- Two assemblies are required per connector.
- Bulk quantities — each type part is separately packaged.
- All parts are shipped unassembled.
- *Most common material is steel with optional finish.
- All dimensions are for reference only. Tolerances are to manufacturer's standards.

