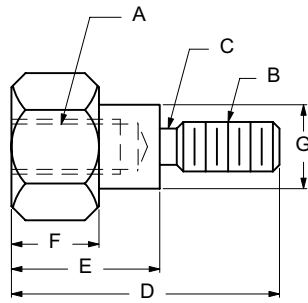
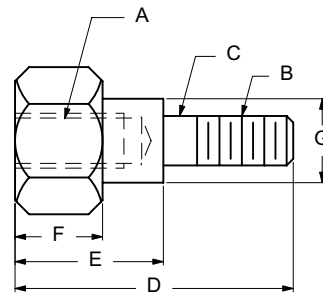
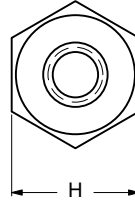




FEMALE SCREW LOCKS (shouldered • inch/metric)



STYLE 1



STYLE 3



| | | | |
|------------------|----------|----------------------|--------|
| ORDERING CODE | XX | XXXX | XX |
| | MATERIAL | BASIC PART NUMBER | FINISH |

| | |
|----------|------|
| MATERIAL | CODE |
| STEEL | ST |

| BASIC PART NUMBER | STYLE | A THREAD | B THREAD | C THREAD RELIEF | D OVERALL LENGTH | E LENGTH | F HEAD LENGTH | G SHOULDER DIAMETER | H ACROSS FLATS |
|-------------------|-------|------------|------------|-----------------|------------------|----------|---------------|---------------------|----------------|
| 9665 | 1 | 3-48 | 6-32 | .030 to M.D. | .61 | .34 | .26 | .18 | .28 |
| 9666 | 1 | 6-32 | 6-32 | .030 to M.D. | .59 | .34 | .19 | .19 | .25 |
| 9667 | 1 | M3.5 X 0.6 | 4-40 | .030 to M.D. | .59 | .33 | .19 | .19 | .28 |
| 9668 | 1 | M3.5 X 0.6 | 4-40 | .030 to M.D. | .59 | .34 | .26 | .16 | .28 |
| 9669 | 1 | M3.5 X 0.6 | 4-40 | .030 to M.D. | .98 | .59 | .26 | .12 | .28 |
| 9674 | 1 | M3.5 X 0.6 | 6-32 | .030 to M.D. | .67 | .42 | .34 | .16 | .28 |
| 9675 | 1 | M3.5 X 0.6 | 6-32 | .030 to M.D. | .72 | .34 | .26 | .16 | .28 |
| 9676 | 1 | M3.5 X 0.6 | 6-32 | .030 to M.D. | .75 | .45 | .26 | .17 | .28 |
| 9677 | 1 | M3.5 X 0.6 | M3 X 0.5 | .030 to M.D. | .69 | .40 | .20 | .18 | .28 |
| 9678 | 1 | M3.5 X 0.6 | M3 X 0.5 | .030 to M.D. | .69 | .45 | .26 | .18 | .28 |
| 9679 | 1 | M3.5 X 0.6 | M3.5 X 0.6 | .030 to M.D. | .59 | .33 | .19 | .16 | .28 |
| 9681 | 1 | M3.5 X 0.6 | M3.5 X 0.6 | .030 to M.D. | .71 | .47 | .20 | .18 | .28 |
| 9682 | 1 | M3.5 X 0.6 | M3.5 X 0.6 | .030 to M.D. | .92 | .65 | .19 | .19 | .28 |
| 9683 | 1 | M3.5 X 0.6 | M4 X 0.7 | .030 to M.D. | .65 | .32 | .24 | .19 | .28 |
| ST9643-34 | 3 | 4-40 | 4-40 | NONE | .75 | .46 | .24 | .14 | .25 |
| ST9646-34 | 3 | 4-40 | 4-40 | NONE | .64 | .35 | .24 | .14 | .25 |
| ST9649-36 | 3 | 4-40 | 4-40 | NONE | 1.00 | .60 | .23 | .11 | .25 |
| ST9652-50 | 3 | M3.5 X 0.6 | 4-40 | NONE | .65 | .34 | .26 | .17 | .28 |

NOTES:

- *Most common material is steel with optional finish.
- See other sizes and assembly styles on pages G12 and G14.
- Other thread sizes and dimensions are available to your requirements.
- All dimensions are for reference only. Tolerances are to manufacturer's standards.