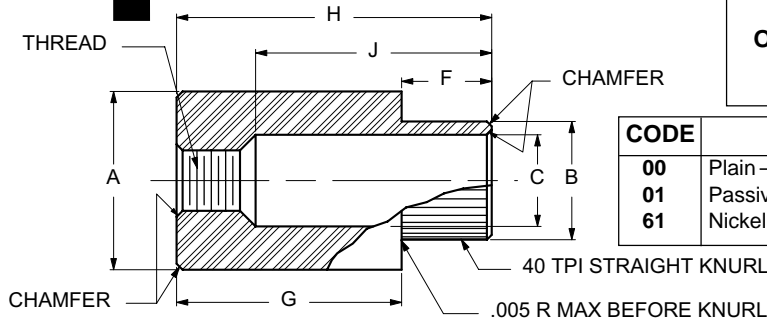


PANEL SCREW RETAINER TYPE A

ORDERING CODE: XX MATERIAL, XXXX-XXX BASIC PART NUMBER, XX FINISH

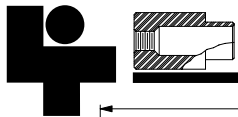
CODE	FINISH	MATERIAL	CODE
00	Plain — None	BRASS	BR
01	Passivate MIL-F-14072-E300	STAINLESS STEEL	SS
61	Nickel QQ-N-290 CL 1, Type VI KC	STEEL	ST



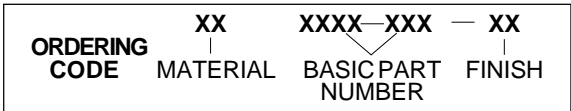
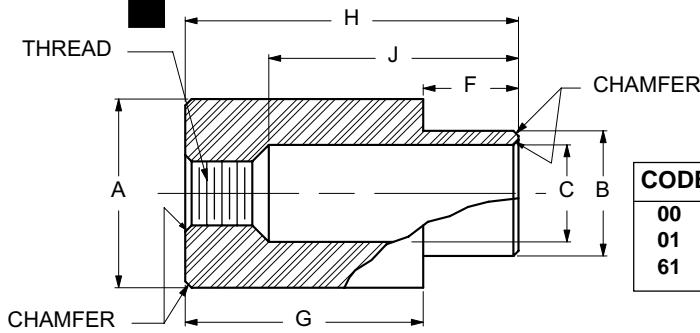
BASIC PART NUMBER	THREAD	PANEL THICKNESS	A ±0.004	B ±0.002	C +0.004 -0.001	F ±0.005	G ±0.005	H ±0.010	J ±0.005
R000-050	4-40	.048-.072	1/4	.198	.150	.050	.200	1/4	.164
R000-080	4-40	.074-.109	1/4	.198	.150	.080	.170	1/4	.164
R000-125	4-40	.119-.156	1/4	.198	.150	.125	.125	1/4	.164
R001-050	6-32	.048-.072	1/4	.198	.150	.050	.262	5/16	.210
R001-080	6-32	.074-.109	1/4	.198	.150	.080	.232	5/16	.210
R001-125	6-32	.119-.156	1/4	.198	.150	.125	.187	5/16	.210
R001-188	6-32	.188	1/4	.198	.150	.188	.124	5/16	.210
R002-050	8-32	.048-.072	5/16	.228	.188	.050	.262	5/16	.208
R002-080	8-32	.074-.109	5/16	.228	.188	.080	.232	5/16	.208
R002-125	8-32	.119-.156	5/16	.228	.188	.125	.187	5/16	.208
R002-188	8-32	.188	5/16	.228	.188	.188	.124	5/16	.208
R003-050	10-24	.048-.072	3/8	.280	.228	.050	.325	3/8	.236
R003-080	10-24	.074-.109	3/8	.280	.228	.080	.295	3/8	.236
R003-125	10-24	.119-.156	3/8	.280	.228	.125	.250	3/8	.236
R003-188	10-24	.188	3/8	.280	.228	.188	.187	3/8	.236
R003-250	10-24	.250	3/8	.280	.228	.250	.125	3/8	.236
R004-050	10-32	.048-.072	3/8	.280	.228	.050	.325	3/8	.236
R004-080	10-32	.074-.109	3/8	.280	.228	.080	.295	3/8	.236
R004-125	10-32	.119-.156	3/8	.280	.228	.125	.250	3/8	.236
R004-188	10-32	.188	3/8	.280	.228	.188	.187	3/8	.236
R004-250	10-32	.250	3/8	.280	.228	.250	.125	3/8	.236
R005-050	1/4-20	.048-.072	1/2	.366	.295	.050	.387	7/16	.292
R005-080	1/4-20	.074-.109	1/2	.366	.295	.080	.357	7/16	.292
R005-126	1/4-20	.119-.156	1/2	.366	.295	.125	.312	7/16	.292
R005-188	1/4-20	.188	1/2	.366	.295	.188	.249	7/16	.292
R005-250	1/4-20	.250	1/2	.366	.295	.250	.187	7/16	.292
R006-050	1/4-28	.048-.072	1/2	.366	.295	.050	.387	7/16	.292
R006-080	1/4-28	.074-.109	1/2	.366	.295	.080	.357	7/16	.292
R006-125	1/4-28	.119-.156	1/2	.366	.295	.125	.312	7/16	.292
R006-188	1/4-28	.188	1/2	.366	.295	.188	.249	7/16	.292
R006-260	1/4-28	.250	1/2	.366	.295	.250	.187	7/16	.292
R007-050	5/16-18	.048-.072	5/8	.414	.347	.050	.450	1/2	.358
R007-080	5/16-18	.074-.109	5/8	.414	.347	.080	.420	1/2	.358
R007-126	5/16-18	.119-.156	5/8	.414	.347	.125	.375	1/2	.358
R007-188	5/16-18	.188	5/8	.414	.347	.188	.312	1/2	.358
R007-250	5/16-18	.250	5/8	.414	.347	.250	.250	1/2	.358
R008-080	3/8-16	.074-.109	3/4	.479	.406	.080	.482	9/16	.418
R008-126	3/8-16	.119-.156	3/4	.479	.406	.125	.437	9/16	.418
R008-188	3/8-16	.188	3/4	.479	.406	.188	.374	9/16	.418
R008-250	3/8-16	.250	3/4	.479	.406	.250	.312	9/16	.418



F29



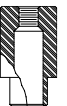
PANEL SCREW RETAINER TYPE B



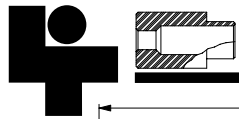
CODE	FINISH
00	Plain — None
01	Passivate MIL-F-14072-E300
61	Nickel QQ-N-290 CL 1, Type VI KC

MATERIAL	CODE
BRASS	BR
STAINLESS STEEL	SS
STEEL	ST

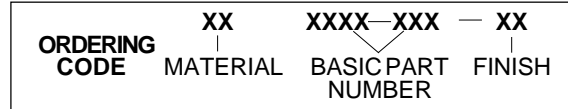
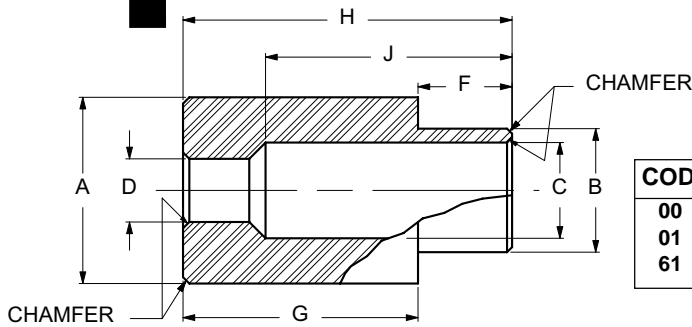
BASIC PART NUMBER	THREAD	PANEL THICKNESS	A ±0.004	B +0.000 -0.003	C +0.004 -0.001	F ±0.005	G ±0.005	H ±0.010	J ±0.005
R009-062	4-40	.052-.067	9/32	.250	.210	.062	.312	3/8	.263
R009-093	4-40	.084-.099	9/32	.250	.210	.093	.281	3/8	.263
R009-125	4-40	.109-.140	9/32	.250	.210	.125	.250	3/8	.263
R009-187	4-40	.171-.203	9/32	.250	.210	.187	.187	3/8	.263
R010-062	6-32	.052-.067	9/32	.250	.210	.062	.312	3/8	.265
R010-093	6-32	.084-.099	9/32	.250	.210	.093	.281	3/8	.265
R010-125	6-32	.109-.140	9/32	.250	.210	.125	.250	3/8	.265
R010-187	6-32	.171-.203	9/32	.250	.210	.187	.187	3/8	.265
R010-250	6-32	.234-.265	9/32	.250	.210	.250	.125	3/8	.265
R011-062	8-32	.052-.067	17/32	.433	.386	.062	.500	9/16	.388
R011-093	8-32	.084-.099	17/32	.433	.386	.093	.468	9/16	.388
R011-125	8-32	.109-.140	17/32	.433	.386	.125	.437	9/16	.388
R011-187	8-32	.171-.203	17/32	.433	.386	.187	.375	9/16	.388
R011-250	8-32	.234-.265	17/32	.433	.386	.250	.312	9/16	.388
R012-062	10-24	.052-.067	17/32	.433	.386	.062	.500	9/16	.395
R012-093	10-24	.084-.099	17/32	.433	.386	.093	.468	9/16	.395
R012-125	10-24	.109-.140	17/32	.433	.386	.125	.437	9/16	.395
R012-187	10-24	.171-.203	17/32	.433	.386	.187	.375	9/16	.395
R012-250	10-24	.234-.265	17/32	.433	.386	.250	.312	9/16	.395
R013-062	10-32	.052-.067	17/32	.433	.386	.062	.500	9/16	.395
R013-093	10-32	.084-.099	17/32	.433	.386	.093	.468	9/16	.395
R013-125	10-32	.109-.140	17/32	.433	.386	.125	.437	9/16	.395
R013-187	10-32	.171-.203	17/32	.433	.386	.187	.375	9/16	.395
R013-250	10-32	.234-.265	17/32	.433	.386	.250	.312	9/16	.395
R014-062	12-24	.052-.067	17/32	.433	.386	.062	.500	9/16	.396
R014-093	12-24	.084-.099	17/32	.433	.386	.093	.468	9/16	.396
R014-125	12-24	.109-.140	17/32	.433	.386	.125	.437	9/16	.396
R014-187	12-24	.171-.203	17/32	.433	.386	.187	.375	9/16	.396
R014-250	12-24	.234-.265	17/32	.433	.386	.250	.312	9/16	.396
R015-062	1/4-20	.052-.067	17/32	.433	.386	.062	.500	9/16	.403
R015-093	1/4-20	.084-.099	17/32	.433	.386	.093	.468	9/16	.403
R015-125	1/4-20	.109-.140	17/32	.433	.386	.125	.437	9/16	.403
R015-187	1/4-20	.171-.203	17/32	.433	.386	.187	.375	9/16	.403
R015-250	1/4-20	.234-.265	17/32	.433	.386	.250	.312	9/16	.403
R016-062	1/4-28	.052-.067	17/32	.433	.386	.062	.500	9/16	.403
R016-093	1/4-28	.084-.099	17/32	.433	.386	.093	.468	9/16	.403
R016-125	1/4-28	.109-.140	17/32	.433	.386	.125	.437	9/16	.403
R016-187	1/4-28	.171-.203	17/32	.433	.386	.187	.375	9/16	.403
R016-250	1/4-28	.234-.265	17/32	.433	.386	.250	.312	9/16	.403



F30



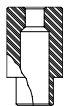
PANEL SCREW RETAINER TYPE C



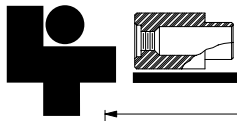
CODE	FINISH
00	Plain — None
01	Passivate MIL-F-14072-E300
61	Nickel QQ-N-290 CL 1, Type VI KC

MATERIAL	CODE
BRASS	BR
STAINLESS STEEL	SS
STEEL	ST

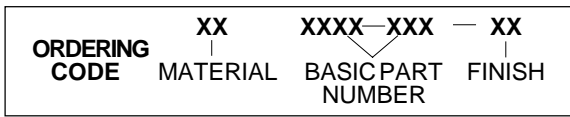
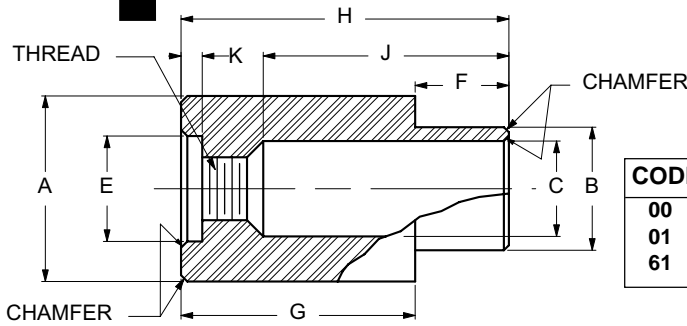
BASIC PART NUMBER	THREAD	PANEL THICKNESS	A ±0.004	B +0.000 -0.003	C +0.004 -0.001	D +0.004 -0.001	F ±0.005	G ±0.005	H ±0.010	J ±0.005
R017-062	4-40	.052-.067	9/32	.250	.210	.125	.062	.312	3/8	.299
R017-093	4-40	.084-.099	9/32	.250	.210	.125	.093	.281	3/8	.299
R017-125	4-40	.109-.140	9/32	.250	.210	.125	.125	.250	3/8	.299
R017-187	4-40	.171-.203	9/32	.250	.210	.125	.187	.187	3/8	.299
R018-062	6-32	.052-.067	9/32	.250	.210	.152	.062	.312	3/8	.304
R018-093	6-32	.084-.099	9/32	.250	.210	.152	.093	.281	3/8	.304
R018-125	6-32	.109-.140	9/32	.250	.210	.152	.125	.250	3/8	.304
R018-187	6-32	.171-.203	9/32	.250	.210	.152	.187	.187	3/8	.304
R019-062	8-32	.052-.067	17/32	.433	.386	.177	.062	.500	9/16	.447
R019-093	8-32	.084-.099	17/32	.433	.386	.177	.093	.468	9/16	.447
R019-125	8-32	.109-.140	17/32	.433	.386	.177	.125	.437	9/16	.447
R019-187	8-32	.171-.203	17/32	.433	.386	.177	.187	.375	9/16	.447
R019-250	8-32	.234-.265	17/32	.433	.386	.177	.250	.312	9/16	.447
R020-062	10-24	.052-.067	17/32	.433	.386	.203	.062	.500	9/16	.464
R020-093	10-24	.084-.099	17/32	.433	.386	.203	.093	.468	9/16	.464
R020-125	10-24	.109-.140	17/32	.433	.386	.203	.125	.437	9/16	.464
R020-187	10-24	.171-.203	17/32	.433	.386	.203	.187	.375	9/16	.464
R020-250	10-24	.234-.265	17/32	.433	.386	.203	.250	.312	9/16	.464
R021-062	10-32	.052-.067	17/32	.433	.386	.203	.062	.500	9/16	.464
R021-093	10-32	.084-.099	17/32	.433	.386	.203	.093	.468	9/16	.464
R021-126	10-32	.109-.140	17/32	.433	.386	.203	.125	.437	9/16	.464
R021-187	10-32	.171-.203	17/32	.433	.386	.203	.187	.375	9/16	.464
R021-250	10-32	.234-.265	17/32	.433	.386	.203	.250	.312	9/16	.464
R022-062	12-24	.052-.067	17/32	.433	.386	.228	.062	.500	9/16	.459
R022-093	12-24	.084-.099	17/32	.433	.386	.228	.093	.468	9/16	.459
R022-125	12-24	.109-.140	17/32	.433	.386	.228	.125	.437	9/16	.459
R022-187	12-24	.171-.203	17/32	.433	.386	.228	.187	.375	9/16	.459
R022-250	12-24	.234-.265	17/32	.433	.386	.228	.250	.312	9/16	.459
R023-062	1/4-20	.052-.067	17/32	.433	.386	.257	.062	.500	9/16	.475
R023-093	1/4-20	.084-.099	17/32	.433	.386	.257	.093	.468	9/16	.475
R023-125	1/4-20	.109-.140	17/32	.433	.386	.257	.125	.437	9/16	.475
R023-187	1/4-20	.171-.203	17/32	.433	.386	.257	.187	.375	9/16	.475
R023-250	1/4-20	.234-.265	17/32	.433	.386	.257	.250	.312	9/16	.475
R024-062	1/4-28	.052-.067	17/32	.433	.386	.257	.062	.500	9/16	.475
R024-093	1/4-28	.084-.099	17/32	.433	.386	.257	.093	.468	9/16	.475
R024-125	1/4-28	.109-.140	17/32	.433	.386	.257	.125	.437	9/16	.475
R024-187	1/4-28	.171-.203	17/32	.433	.386	.257	.187	.375	9/16	.475
R024-260	1/4-28	.234-.265	17/32	.433	.386	.257	.250	.312	9/16	.475



F31



PANEL SCREW RETAINER TYPE D



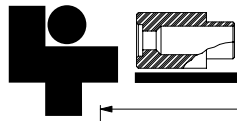
CODE	FINISH
00	Plain — None
01	Passivate MIL-F-14072-E300
61	Nickel QQ-N-290 CL 1, Type VI KC

MATERIAL	CODE
BRASS	BR
STAINLESS STEEL	SS
STEEL	ST

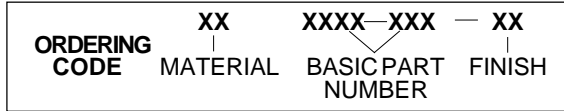
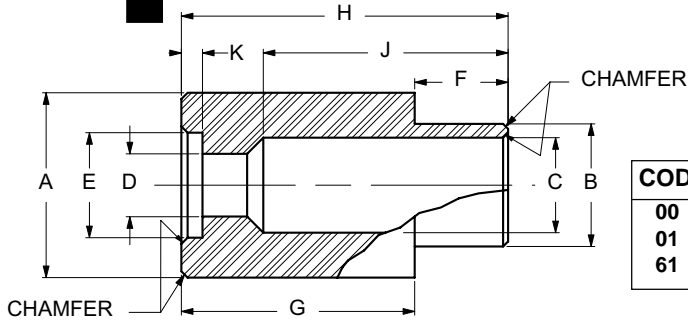
BASIC PART NUMBER	THREAD	PANEL THICKNESS	A ±0.004	B +0.000 -0.003	C +0.004 -0.001	E +0.005 -0.000	F ±0.005	G ±0.005	H ±0.010	J ±0.005	K +0.010 -0.000
R025-062	4-40	.052-.067	9/32	.250	.210	.192	.062	.375	7/16	.263	.078
R025-093	4-40	.084-.099	9/32	.250	.210	.192	.093	.344	7/16	.263	.078
R025-125	4-40	.109-.140	9/32	.250	.210	.192	.125	.312	7/16	.263	.078
R025-187	4-40	.171-.203	9/32	.250	.210	.192	.187	.250	7/16	.263	.078
R025-250	4-40	.234-.265	9/32	.250	.210	.192	.250	.187	7/16	.263	.078
R026-062	6-32	.052-.067	9/32	.250	.210	.192	.062	.375	7/16	.266	.078
R026-093	6-32	.084-.099	9/32	.250	.210	.192	.093	.344	7/16	.266	.078
R026-125	6-32	.109-.140	9/32	.250	.210	.192	.125	.312	7/16	.266	.078
R026-187	6-32	.171-.203	9/32	.250	.210	.192	.187	.250	7/16	.266	.078
R026-250	6-32	.234-.265	9/32	.250	.210	.192	.250	.187	7/16	.266	.078
R027-062	8-32	.052-.067	17/32	.433	.386	.312	.062	.562	5/8	.388	.093
R027-093	8-32	.084-.099	17/32	.433	.386	.312	.093	.532	5/8	.388	.093
R027-125	8-32	.109-.140	17/32	.433	.386	.312	.125	.500	5/8	.388	.093
R027-187	8-32	.171-.203	17/32	.433	.386	.312	.187	.437	5/8	.388	.093
R027-250	8-32	.234-.265	17/32	.433	.386	.312	.250	.375	5/8	.388	.093
R028-062	10-24	.052-.067	17/32	.433	.386	.312	.062	.562	5/8	.393	.093
R028-093	10-24	.084-.099	17/32	.433	.386	.312	.093	.532	5/8	.393	.093
R028-125	10-24	.109-.140	17/32	.433	.386	.312	.125	.500	5/8	.393	.093
R028-187	10-24	.171-.203	17/32	.433	.386	.312	.187	.437	5/8	.393	.093
R028-250	10-24	.234-.265	17/32	.433	.386	.312	.250	.375	5/8	.393	.093
R029-062	10-32	.052-.067	17/32	.433	.386	.312	.062	.562	5/8	.393	.093
R029-093	10-32	.084-.099	17/32	.433	.386	.312	.093	.532	5/8	.393	.093
R029-125	10-32	.109-.140	17/32	.433	.386	.312	.125	.500	5/8	.393	.093
R029-187	10-32	.171-.203	17/32	.433	.386	.312	.187	.437	5/8	.393	.093
R029-250	10-32	.234-.265	17/32	.433	.386	.312	.250	.375	5/8	.393	.093
R030-062	12-24	.052-.067	17/32	.433	.386	.312	.062	.562	5/8	.397	.093
R030-093	12-24	.084-.099	17/32	.433	.386	.312	.093	.532	5/8	.397	.093
R030-125	12-24	.109-.140	17/32	.433	.386	.312	.125	.500	5/8	.397	.093
R030-187	12-24	.171-.203	17/32	.433	.386	.312	.187	.437	5/8	.397	.093
R030-250	12-24	.234-.265	17/32	.433	.386	.312	.250	.375	5/8	.397	.093
R031-062	1/4-20	.052-.067	17/32	.433	.386	.312	.062	.562	5/8	.405	.093
R031-093	1/4-20	.084-.099	17/32	.433	.386	.312	.093	.532	5/8	.405	.093
R031-125	1/4-20	.109-.140	17/32	.433	.386	.312	.125	.500	5/8	.405	.093
R031-187	1/4-20	.171-.203	17/32	.433	.386	.312	.187	.437	5/8	.405	.093
R031-250	1/4-20	.234-.265	17/32	.433	.386	.312	.250	.375	5/8	.405	.093
R032-062	1/4-28	.052-.067	17/32	.433	.386	.312	.062	.562	5/8	.405	.093
R032-093	1/4-28	.084-.099	17/32	.433	.386	.312	.093	.532	5/8	.405	.093
R032-125	1/4-28	.109-.140	17/32	.433	.386	.312	.125	.500	5/8	.405	.093
R032-187	1/4-28	.171-.203	17/32	.433	.386	.312	.187	.437	5/8	.405	.093
R032-250	1/4-28	.234-.265	17/32	.433	.386	.312	.250	.375	5/8	.405	.093



F32



PANEL SCREW RETAINER TYPE E



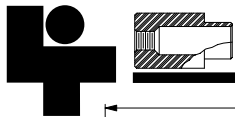
CODE	FINISH
00	Plain — None
01	Passivate MIL-F-14072-E300
61	Nickel QQ-N-290 CL 1, Type VI KC

MATERIAL	CODE
BRASS	BR
STAINLESS STEEL	SS
STEEL	ST

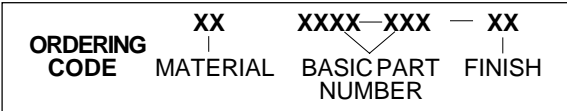
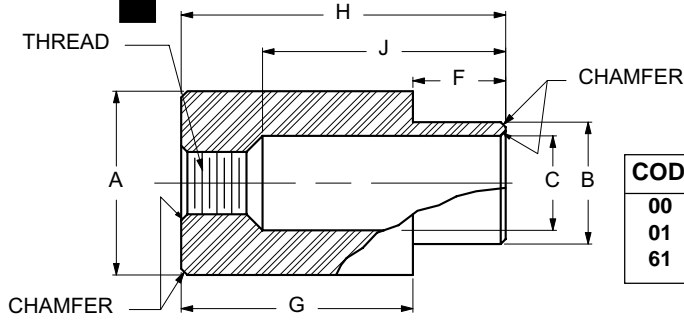
BASIC PART NUMBER	THREAD	PANEL THICKNESS	A ±0.004	B +0.000 -0.003	C +0.004 -0.001	D +0.004 -0.001	E +0.005 -0.000	F ±0.005	G ±0.005	H ±0.010	J ±0.005	K +0.010 -0.000
R033-062	4-40	.052-.067	9/32	.250	.210	.125	.192	.062	.375	7/16	.299	.078
R033-093	4-40	.084-.099	9/32	.250	.210	.125	.192	.093	.344	7/16	.299	.078
R033-125	4-40	.109-.140	9/32	.250	.210	.125	.192	.125	.312	7/16	.299	.078
R033-187	4-40	.171-.203	9/32	.250	.210	.125	.192	.187	.250	7/16	.299	.078
R033-250	4-40	.234-.265	9/32	.250	.210	.125	.192	.250	.187	7/16	.299	.078
R034-062	6-32	.052-.067	9/32	.250	.210	.150	.192	.062	.375	7/16	.305	.078
R034-093	6-32	.084-.099	9/32	.250	.210	.150	.192	.093	.344	7/16	.305	.078
R034-125	6-32	.109-.140	9/32	.250	.210	.150	.192	.125	.312	7/16	.305	.078
R034-187	6-32	.171-.203	9/32	.250	.210	.150	.192	.187	.250	7/16	.305	.078
R034-250	6-32	.234-.265	9/32	.250	.210	.150	.192	.250	.187	7/16	.305	.078
R035-062	8-32	.052-.067	17/32	.433	.386	.175	.312	.062	.562	5/8	.427	.093
R035-093	8-32	.084-.099	17/32	.433	.386	.175	.312	.093	.532	5/8	.427	.093
R035-125	8-32	.109-.140	17/32	.433	.386	.175	.312	.125	.500	5/8	.427	.093
R035-187	8-32	.171-.203	17/32	.433	.386	.175	.312	.187	.437	5/8	.427	.093
R035-250	8-32	.234-.265	17/32	.433	.386	.175	.312	.250	.375	5/8	.427	.093
R036-062	10-24	.052-.067	17/32	.433	.386	.203	.312	.062	.562	5/8	.432	.093
R036-093	10-24	.084-.099	17/32	.433	.386	.203	.312	.093	.532	5/8	.432	.093
R036-125	10-24	.109-.140	17/32	.433	.386	.203	.312	.125	.500	5/8	.432	.093
R036-187	10-24	.171-.203	17/32	.433	.386	.203	.312	.187	.437	5/8	.432	.093
R036-250	10-24	.234-.265	17/32	.433	.386	.203	.312	.250	.375	5/8	.432	.093
R037-062	10-32	.052-.067	17/32	.433	.386	.203	.312	.062	.562	5/8	.432	.093
R037-093	10-32	.084-.099	17/32	.433	.386	.203	.312	.093	.532	5/8	.432	.093
R037-125	10-32	.109-.140	17/32	.433	.386	.203	.312	.125	.500	5/8	.432	.093
R037-187	10-32	.171-.203	17/32	.433	.386	.203	.312	.187	.437	5/8	.432	.093
R037-250	10-32	.234-.265	17/32	.433	.386	.203	.312	.250	.375	5/8	.432	.093
R038-062	12-24	.052-.067	17/32	.433	.386	.228	.312	.062	.562	5/8	.438	.093
R038-093	12-24	.084-.099	17/32	.433	.386	.228	.312	.093	.532	5/8	.438	.093
R038-125	12-24	.109-.140	17/32	.433	.386	.228	.312	.125	.500	5/8	.438	.093
R038-187	12-24	.171-.203	17/32	.433	.386	.228	.312	.187	.437	5/8	.438	.093
R038-250	12-24	.234-.265	17/32	.433	.386	.228	.312	.250	.375	5/8	.438	.093
R039-062	1/4-20	.052-.067	17/32	.433	.386	.257	.312	.062	.562	5/8	.445	.093
R039-093	1/4-20	.084-.099	17/32	.433	.386	.257	.312	.093	.532	5/8	.445	.093
R039-125	1/4-20	.109-.140	17/32	.433	.386	.257	.312	.125	.500	5/8	.445	.093
R039-187	1/4-20	.171-.203	17/32	.433	.386	.257	.312	.187	.437	5/8	.445	.093
R039-250	1/4-20	.234-.265	17/32	.433	.386	.257	.312	.250	.375	5/8	.445	.093
R040-062	1/4-28	.052-.067	17/32	.433	.386	.257	.312	.062	.562	5/8	.445	.093
R040-093	1/4-28	.084-.099	17/32	.433	.386	.257	.312	.093	.532	5/8	.445	.093
R040-125	1/4-28	.109-.140	17/32	.433	.386	.257	.312	.125	.500	5/8	.445	.093
R040-187	1/4-28	.171-.203	17/32	.433	.386	.257	.312	.187	.437	5/8	.445	.093
R040-250	1/4-28	.234-.265	17/32	.433	.386	.257	.312	.250	.375	5/8	.445	.093



F33



PANEL SCREW RETAINER TYPE F



CODE	FINISH
00	Plain — None
01	Passivate MIL-F-14072-E300
61	Nickel QQ-N-290 CL 1, Type VI KC

MATERIAL	CODE
BRASS	BR
STAINLESS STEEL	SS
STEEL	ST

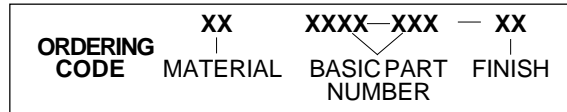
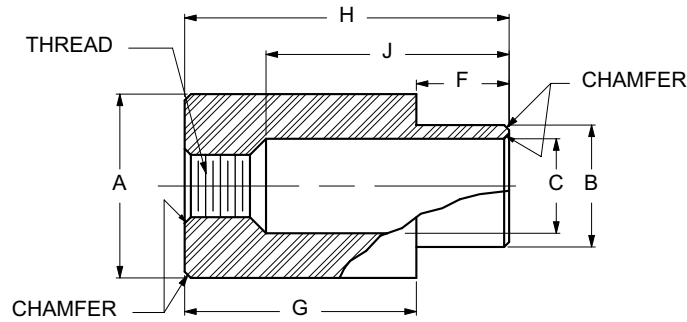
BASIC PART NUMBER	THREAD	PANEL THICKNESS	A ±0.004	B +0.000 -0.003	C +0.004 -0.001	F ±0.005	G ±0.005	H ±0.010	J ±0.005
R041-062	4-40	.052-.067	1/4	.188	.150	.062	.188	1/4	.161
R041-093	4-40	.084-.099	1/4	.188	.150	.093	.156	1/4	.161
R041-125	4-40	.109-.140	1/4	.188	.150	.125	.125	1/4	.161
R042-062	6-32	.052-.067	1/4	.188	.150	.062	.250	5/16	.210
R042-093	6-32	.084-.099	1/4	.188	.150	.093	.218	5/16	.210
R042-125	6-32	.109-.140	1/4	.188	.150	.125	.187	5/16	.210
R042-187	6-32	.171-.203	1/4	.188	.150	.187	.125	5/16	.210
R043-062	8-32	.052-.067	3/8	.218	.188	.062	.250	5/16	.210
R043-093	8-32	.084-.099	3/8	.218	.188	.093	.218	5/16	.210
R043-125	8-32	.109-.140	3/8	.218	.188	.125	.187	5/16	.210
R043-187	8-32	.171-.203	3/8	.218	.188	.187	.125	5/16	.210
R044-062	10-24	.052-.067	3/8	.270	.228	.062	.312	3/8	.236
R044-093	10-24	.084-.099	3/8	.270	.228	.093	.281	3/8	.236
R044-125	10-24	.109-.140	3/8	.270	.228	.125	.250	3/8	.236
R044-187	10-24	.171-.203	3/8	.270	.228	.187	.188	3/8	.236
R044-250	10-24	.234-.265	3/8	.270	.228	.250	.125	3/8	.236
R045-062	10-32	.052-.067	3/8	.270	.228	.062	.312	3/8	.236
R045-093	10-32	.084-.099	3/8	.270	.228	.093	.281	3/8	.236
R045-125	10-32	.109-.140	3/8	.270	.228	.125	.250	3/8	.236
R045-187	10-32	.171-.203	3/8	.270	.228	.187	.188	3/8	.236
R045-250	10-32	.234-.265	3/8	.270	.228	.250	.125	3/8	.236
R046-062	12-24	.052-.067	3/8	.270	.228	.062	.312	3/8	.239
R046-093	12-24	.084-.099	3/8	.270	.228	.093	.281	3/8	.239
R046-125	12-24	.109-.140	3/8	.270	.228	.125	.250	3/8	.239
R046-187	12-24	.171-.203	3/8	.270	.228	.187	.188	3/8	.239
R046-250	12-24	.234-.265	3/8	.270	.228	.250	.125	3/8	.239
R047-062	1/4-20	.052-.067	1/2	.356	.295	.062	.375	7/16	.295
R047-093	1/4-20	.084-.099	1/2	.356	.295	.093	.343	7/16	.295
R047-125	1/4-20	.109-.140	1/2	.356	.295	.125	.312	7/16	.295
R047-187	1/4-20	.171-.203	1/2	.356	.295	.187	.250	7/16	.295
R047-250	1/4-20	.234-.265	1/2	.356	.295	.250	.187	7/16	.295
R048-062	1/4-28	.052-.067	1/2	.356	.295	.062	.375	7/16	.295
R048-093	1/4-28	.084-.099	1/2	.356	.295	.093	.343	7/16	.295
R048-125	1/4-28	.109-.140	1/2	.356	.295	.125	.312	7/16	.295
R048-187	1/4-28	.171-.203	1/2	.356	.295	.187	.250	7/16	.295
R048-250	1/4-28	.234-.265	1/2	.356	.295	.250	.187	7/16	.295
R049-062	5/16-24	.052-.067	1/2	.404	.343	.062	.375	7/16	.297
R049-093	5/16-24	.084-.099	1/2	.404	.343	.093	.343	7/16	.297
R049-125	5/16-24	.109-.140	1/2	.404	.343	.125	.312	7/16	.297
R049-187	5/16-24	.171-.203	1/2	.404	.343	.187	.250	7/16	.297
R049-250	5/16-24	.234-.265	1/2	.404	.343	.250	.187	7/16	.297



F34



PANEL SCREW RETAINER TYPE G



CODE	FINISH
00	Plain — None
01	Passivate MIL-F-14072-E300
61	Nickel QQ-N-290 CL 1, Type VI KC

MATERIAL	CODE
BRASS	BR
STAINLESS STEEL	SS
STEEL	ST

BASIC PART NUMBER	THREAD	PANEL THICKNESS	A ±0.004	B +0.000 -0.003	C +0.004 -0.001	F ±0.005	G ±0.005	H ±0.010	J ±0.005
R050-165	6-32	.109-.140	9/16	.406	.343	.165	.312	.477	.242
R050-230	6-32	.171-.203	9/16	.406	.343	.230	.312	.542	.307
R050-290	6-32	.234-.265	9/16	.406	.343	.290	.312	.602	.367
R051-165	8-32	.109-.140	9/16	.406	.343	.165	.312	.477	.248
R051-230	8-32	.171-.203	9/16	.406	.343	.230	.312	.542	.315
R051-290	8-32	.234-.265	9/16	.406	.343	.290	.312	.602	.373
R052-165	10-32	.109-.140	9/16	.406	.343	.165	.312	.477	.252
R052-230	10-32	.171-.203	9/16	.406	.343	.230	.312	.542	.318
R052-290	10-32	.234-.265	9/16	.406	.343	.290	.312	.602	.378
R053-165	12-24	.109-.140	9/16	.406	.343	.165	.312	.477	.256
R053-230	12-24	.171-.203	9/16	.406	.343	.230	.312	.542	.321
R053-290	12-24	.234-.265	9/16	.406	.343	.290	.312	.602	.381
R054-165	1/4-20	.109-.140	9/16	.406	.343	.165	.312	.477	.261
R054-235	1/4-20	.171-.203	9/16	.406	.343	.230	.312	.542	.326
R054-290	1/4-20	.234-.265	9/16	.406	.343	.290	.312	.602	.386

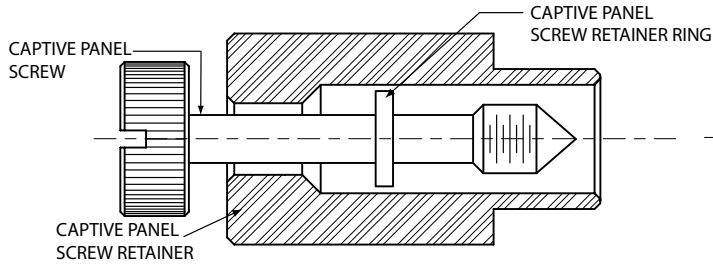


F35

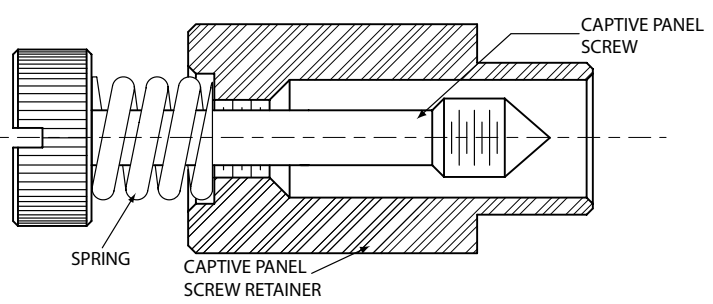


PANEL SCREW RETAINER SPRINGS AND RETAINER RINGS

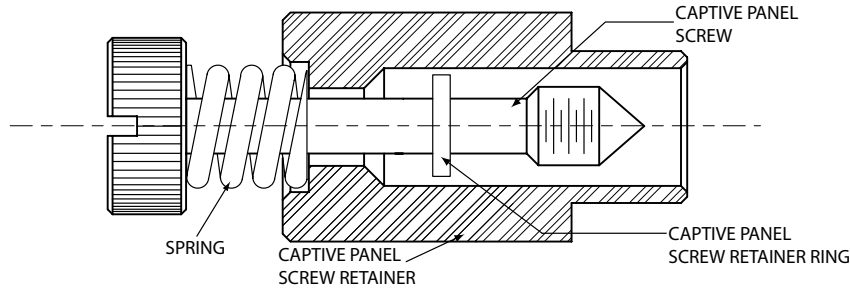
TYPE C



TYPE D

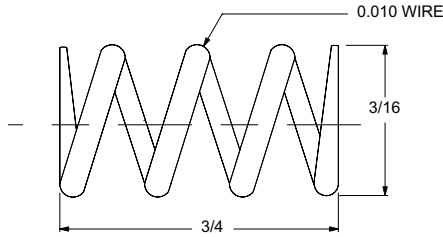


TYPE E

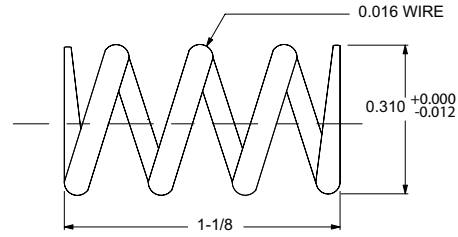


STAINLESS STEEL SPRINGS AND RETAINER RINGS

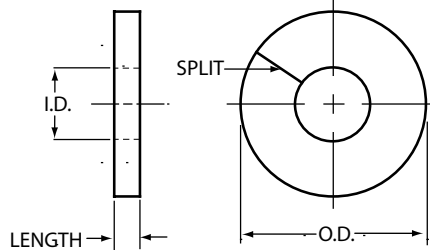
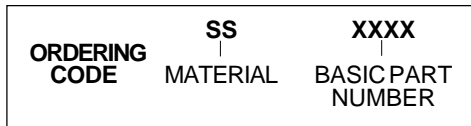
PART NUMBER R055



PART NUMBER R056

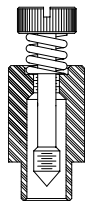
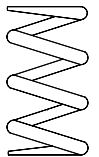


RETAINER RING



RETAINER RING SIZES

BASIC PART NUMBER	THREAD	O.D. ±0.003	I.D. ±0.003	LENGTH ±0.003
R057	4-40	0.171	0.093	0.010
R058	6-32	0.171	0.112	0.010
R059	8-32	0.312	0.146	0.012
R060	10-24	0.312	0.166	0.012
R061	10-32	0.312	0.166	0.012
R062	12-24	0.312	0.190	0.012
R063	1/4-20	0.312	0.204	0.012
R064	1/4-28	0.312	0.214	0.012



F36