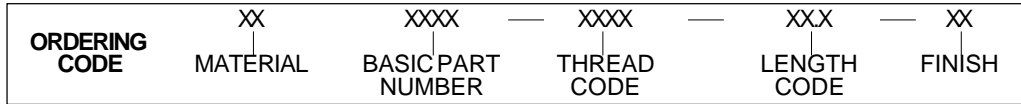
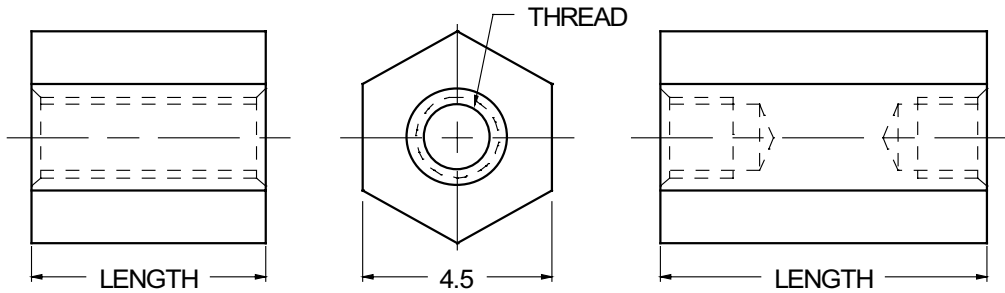




# 4.5mm HEX STANDOFFS



MATERIAL	CODE
ALUMINUM	AL
BRASS	BR

NOTE: See Page B2 for additional materials and specifications.

BASIC PART NO.
5081

THREADSIZE	CODE
M2.5 x 0.45	2545
M3.0 x 0.5	3050

LENGTH mm	CODE	LENGTH mm	CODE
3	03.0	27	27.0
4	04.0	29	29.0
5	05.0	30	30.0
6	06.0	32	32.0
8	08.0	33	33.0
10	10.0	35	35.0
11	11.0	37	37.0
12	12.0	38	38.0
13	13.0	40	40.0
14	14.0	41	41.0
16	16.0	44	44.0
19	19.0	45	45.0
20	20.0	48	48.0
22	22.0	51	51.0
25	25.0		

NOTE: For lengths not listed, contact Lyn-Tron, Inc.

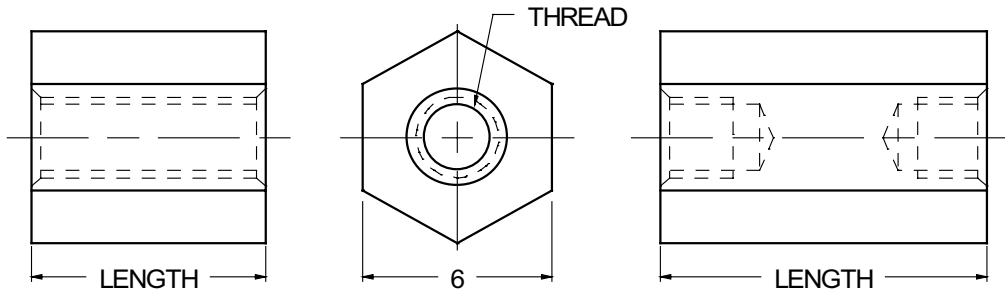
CODE	FINISH	CODE	FINISH
00	Plain — None	33	Black Zinc
01	Passivate MIL-F-14072-E300	34*	Zinc QQ-Z-325, Type II, CL 3 — Clear Chromate
02	Caustic Etch	35	Zinc QQ-Z-325, Type I, CL 3
03	Bright Dip — Brass	36	Zinc QQ-Z-325, Type II, CL 3 — Yellow Chromate
11	Anodize MIL-A-8625C, Type I Chromic Hot Water Seal — Dark Grey	42	Electro Tin MIL-T-10727, Type I (Dull)
12	Anodize MIL-A-8625C, Type II Sulphuric Hot Water Seal — Clear	43	Electro Tin MIL-T-10727 C, Type I (Bright)
13	Anodize MIL-A-8625C, Type II Sulphuric Dichromate Seal — Yellow Green	44	Electro Tin (Solder) MIL-F-14072 M230/M222
14	Anodize MIL-A-8625C — Black	48	Copper / Nickel / Bright Tin
21	Iridite MIL-C-5541 — Clear	50	Black Oxide MIL-C-13924 — Steel
22*	Iridite MIL-C-5541 — Gold #14	51	Black Oxide MIL-F-495 — Brass
31	Cadmium QQ-P-416, CL 2 — Clear Chromate	52	Black Oxide MIL-C-13924 — Stainless Steel
32	Cadmium QQ-P-416, CL 2 — Color Chromate	61	Nickel QQ-N-290 CL 1, Type VI KC
		63	Ductile Nickel
		66	Electroless Nickel
		91	Silver QQ-S-365

\*Standard finishes: Zinc (Clear Chromate) on brass material, Iridite (Gold #14) on aluminum material.

**B13**



# 6mm HEX STANDOFFS



<b>ORDERING CODE</b>	XX	XXXX	XXXX	XXX	XX
	MATERIAL	BASIC PART NUMBER	THREAD CODE	LENGTH CODE	FINISH

MATERIAL	CODE
ALUMINUM	AL
BRASS	BR
NYLON	NY
STAINLESS STEEL	SS
STEEL	ST

NOTE: See Page B2 for additional materials and specifications.

<b>BASIC PART NO.</b>
5083

THREADSIZE	CODE
M3.0 x 0.5	3050
M3.5 x 0.6	3560
M4.0 x 0.7	4070
M5.0 x 0.8	5080

LENGTH mm	CODE	LENGTH mm	CODE
3	03.0	27	27.0
4	04.0	29	29.0
5	05.0	30	30.0
6	06.0	32	32.0
8	08.0	33	33.0
10	10.0	35	35.0
11	11.0	37	37.0
12	12.0	38	38.0
13	13.0	40	40.0
14	14.0	41	41.0
16	16.0	44	44.0
19	19.0	45	45.0
20	20.0	48	48.0
22	22.0	51	51.0
25	25.0		

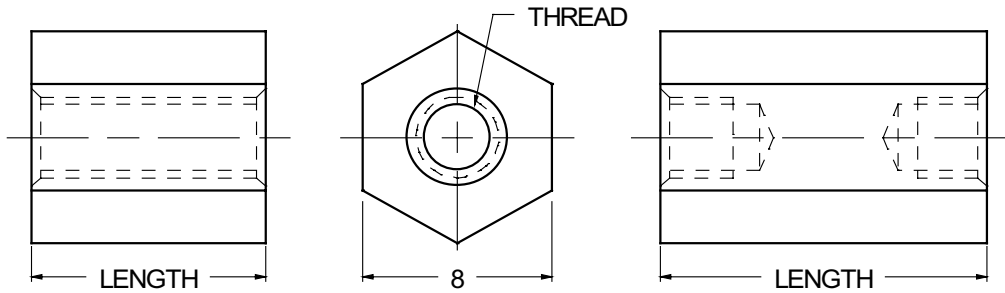
NOTE: For lengths not listed, contact Lyn-Tron, Inc.

CODE	FINISH	CODE	FINISH
00	Plain — None	33	Black Zinc
01	Passivate MIL-F-14072-E300	34*	Zinc QQ-Z-325, Type II, CL 3 — Clear Chromate
02	Caustic Etch	35	Zinc QQ-Z-325, Type I, CL 3
03	Bright Dip — Brass	36	Zinc QQ-Z-325, Type II, CL 3 — Yellow Chromate
11	Anodize MIL-A-8625C, Type I Chromic Hot Water Seal — Dark Grey	42	Electro Tin MIL-T-10727, Type I (Dull)
12	Anodize MIL-A-8625C, Type II Sulphuric Hot Water Seal — Clear	43	Electro Tin MIL-T-10727 C, Type I (Bright)
13	Anodize MIL-A-8625C, Type II Sulphuric Dichromate Seal — Yellow Green	44	Electro Tin (Solder) MIL-F-14072 M230/M222
14	Anodize MIL-A-8625C — Black	48	Copper / Nickel / Bright Tin
21	Iridite MIL-C-5541 — Clear	50	Black Oxide MIL-C-13924 — Steel
22*	Iridite MIL-C-5541 — Gold #14	51	Black Oxide MIL-F-495 — Brass
31	Cadmium QQ-P-416, CL 2 — Clear Chromate	52	Black Oxide MIL-C-13924 — Stainless Steel
32	Cadmium QQ-P-416, CL 2 — Color Chromate	61	Nickel QQ-N-290 CL 1, Type VI KC
		63	Ductile Nickel
		66	Electroless Nickel
		91	Silver QQ-S-365

\*Standard finishes: Zinc (Clear Chromate) on brass material, Iridite (Gold #14) on aluminum material.



# 8mm HEX STANDOFFS



<b>ORDERING CODE</b>	XX	XXXX	XXXX	XXX	XX
	MATERIAL	BASIC PART NUMBER	THREAD CODE	LENGTH CODE	FINISH

MATERIAL	CODE
ALUMINUM	AL
BRASS	BR
STAINLESS STEEL	SS
STEEL	ST

NOTE: See Page B2 for additional materials and specifications.

<b>BASIC PART NO.</b>
<b>5085</b>

THREADSIZE	CODE
M3.0 x 0.5	<b>3050</b>
M3.5 x 0.6	<b>3560</b>
M4.0 x 0.7	<b>4070</b>
M5.0 x 0.8	<b>5080</b>

LENGTH mm	CODE	LENGTH mm	CODE
3	<b>03.0</b>	27	<b>27.0</b>
4	<b>04.0</b>	29	<b>29.0</b>
5	<b>05.0</b>	30	<b>30.0</b>
6	<b>06.0</b>	32	<b>32.0</b>
8	<b>08.0</b>	33	<b>33.0</b>
10	<b>10.0</b>	35	<b>35.0</b>
11	<b>11.0</b>	37	<b>37.0</b>
12	<b>12.0</b>	38	<b>38.0</b>
13	<b>13.0</b>	40	<b>40.0</b>
14	<b>14.0</b>	41	<b>41.0</b>
16	<b>16.0</b>	44	<b>44.0</b>
19	<b>19.0</b>	45	<b>45.0</b>
20	<b>20.0</b>	48	<b>48.0</b>
22	<b>22.0</b>	51	<b>51.0</b>
25	<b>25.0</b>		

NOTE: For lengths not listed, contact Lyn-Tron, Inc.

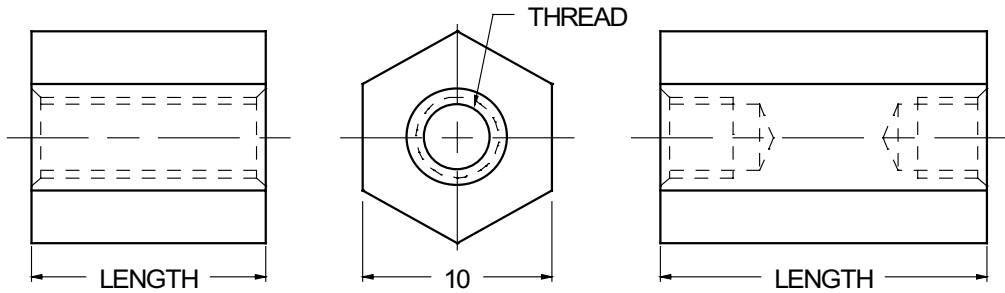
CODE	FINISH	CODE	FINISH
<b>00</b>	Plain — None	<b>33</b>	Black Zinc
<b>01</b>	Passivate MIL-F-14072-E300	<b>34*</b>	Zinc QQ-Z-325, Type II, CL 3 — Clear Chromate
<b>02</b>	Caustic Etch	<b>35</b>	Zinc QQ-Z-325, Type I, CL 3
<b>03</b>	Bright Dip — Brass	<b>36</b>	Zinc QQ-Z-325, Type II, CL 3 — Yellow Chromate
<b>11</b>	Anodize MIL-A-8625C, Type I Chromic Hot Water Seal — Dark Grey	<b>42</b>	Electro Tin MIL-T-10727, Type I (Dull)
<b>12</b>	Anodize MIL-A-8625C, Type II Sulphuric Hot Water Seal — Clear	<b>43</b>	Electro Tin MIL-T-10727 C, Type I (Bright)
<b>13</b>	Anodize MIL-A-8625C, Type II Sulphuric Dichromate Seal — Yellow Green	<b>44</b>	Electro Tin (Solder) MIL-F-14072 M230/M222
<b>14</b>	Anodize MIL-A-8625C — Black	<b>48</b>	Copper / Nickel / Bright Tin
<b>21</b>	Iridite MIL-C-5541 — Clear	<b>50</b>	Black Oxide MIL-C-13924 — Steel
<b>22*</b>	Iridite MIL-C-5541 — Gold #14	<b>51</b>	Black Oxide MIL-F-495 — Brass
<b>31</b>	Cadmium QQ-P-416, CL 2 — Clear Chromate	<b>52</b>	Black Oxide MIL-C-13924 — Stainless Steel
<b>32</b>	Cadmium QQ-P-416, CL 2 — Color Chromate	<b>61</b>	Nickel QQ-N-290 CL 1, Type VI KC
		<b>63</b>	Ductile Nickel
		<b>66</b>	Electroless Nickel
		<b>91</b>	Silver QQ-S-365

\*Standard finishes: Zinc (Clear Chromate) on brass material, Iridite (Gold #14) on aluminum material.

**B15**



# 10mm HEX STANDOFFS



<b>ORDERING CODE</b>	XX	XXXX	XXXX	XXX	XX
	MATERIAL	BASIC PART NUMBER	THREAD CODE	LENGTH CODE	FINISH

MATERIAL	CODE
ALUMINUM	AL
BRASS	BR
STAINLESS STEEL	SS
STEEL	ST

NOTE: See Page B2 for additional materials and specifications.

<b>BASIC PART NO.</b>
<b>5086</b>

THREADSIZE	CODE
M3.5 x 0.6	<b>3560</b>
M4.0 x 0.7	<b>4070</b>
M5.0 x 0.8	<b>5080</b>

LENGTH mm	CODE	LENGTH mm	CODE
3	<b>03.0</b>	27	<b>27.0</b>
4	<b>04.0</b>	29	<b>29.0</b>
5	<b>05.0</b>	30	<b>30.0</b>
6	<b>06.0</b>	32	<b>32.0</b>
8	<b>08.0</b>	33	<b>33.0</b>
10	<b>10.0</b>	35	<b>35.0</b>
11	<b>11.0</b>	37	<b>37.0</b>
12	<b>12.0</b>	38	<b>38.0</b>
13	<b>13.0</b>	40	<b>40.0</b>
14	<b>14.0</b>	41	<b>41.0</b>
16	<b>16.0</b>	44	<b>44.0</b>
19	<b>19.0</b>	45	<b>45.0</b>
20	<b>20.0</b>	48	<b>48.0</b>
22	<b>22.0</b>	51	<b>51.0</b>
25	<b>25.0</b>		

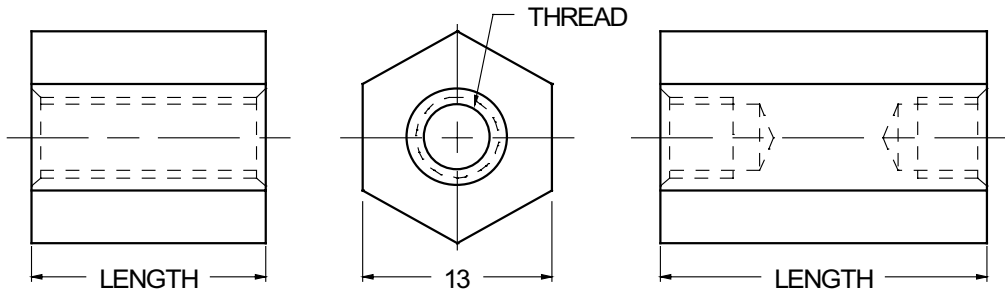
NOTE: For lengths not listed, contact Lyn-Tron, Inc.

CODE	FINISH	CODE	FINISH
<b>00</b>	Plain — None	<b>33</b>	Black Zinc
<b>01</b>	Passivate MIL-F-14072-E300	<b>34*</b>	Zinc QQ-Z-325, Type II, CL 3 — Clear Chromate
<b>02</b>	Caustic Etch	<b>35</b>	Zinc QQ-Z-325, Type I, CL 3
<b>03</b>	Bright Dip — Brass	<b>36</b>	Zinc QQ-Z-325, Type II, CL 3 — Yellow Chromate
<b>11</b>	Anodize MIL-A-8625C, Type I Chromic Hot Water Seal — Dark Grey	<b>42</b>	Electro Tin MIL-T-10727, Type I (Dull)
<b>12</b>	Anodize MIL-A-8625C, Type II Sulphuric Hot Water Seal — Clear	<b>43</b>	Electro Tin MIL-T-10727 C, Type I (Bright)
<b>13</b>	Anodize MIL-A-8625C, Type II Sulphuric Dichromate Seal — Yellow Green	<b>44</b>	Electro Tin (Solder) MIL-F-14072 M230/M222
<b>14</b>	Anodize MIL-A-8625C — Black	<b>48</b>	Copper / Nickel / Bright Tin
<b>21</b>	Iridite MIL-C-5541 — Clear	<b>50</b>	Black Oxide MIL-C-13924 — Steel
<b>22*</b>	Iridite MIL-C-5541 — Gold #14	<b>51</b>	Black Oxide MIL-F-495 — Brass
<b>31</b>	Cadmium QQ-P-416, CL 2 — Clear Chromate	<b>52</b>	Black Oxide MIL-C-13924 — Stainless Steel
<b>32</b>	Cadmium QQ-P-416, CL 2 — Color Chromate	<b>61</b>	Nickel QQ-N-290 CL 1, Type VI KC
		<b>63</b>	Ductile Nickel
		<b>66</b>	Electroless Nickel
		<b>91</b>	Silver QQ-S-365

\*Standard finishes: Zinc (Clear Chromate) on brass material, Iridite (Gold #14) on aluminum material.



# 13mm HEX STANDOFFS



<b>ORDERING CODE</b>	XX	XXXX	XXXX	XXX	XX
	MATERIAL	BASIC PART NUMBER	THREAD CODE	LENGTH CODE	FINISH

MATERIAL	CODE
BRASS	BR
ALUMINUM	AL
STAINLESS STEEL	SS

NOTE: See Page B2 for additional materials and specifications.

<b>BASIC PART NO.</b>
<b>5088</b>

THREADSIZE	CODE
M4.0 x 0.7	<b>4070</b>
M5.0 x 0.8	<b>5080</b>
M6.0 x 1.0	<b>6010</b>

LENGTH mm	CODE	LENGTH mm	CODE
3	<b>03.0</b>	27	<b>27.0</b>
4	<b>04.0</b>	29	<b>29.0</b>
5	<b>05.0</b>	30	<b>30.0</b>
6	<b>06.0</b>	32	<b>32.0</b>
8	<b>08.0</b>	33	<b>33.0</b>
10	<b>10.0</b>	35	<b>35.0</b>
11	<b>11.0</b>	37	<b>37.0</b>
12	<b>12.0</b>	38	<b>38.0</b>
13	<b>13.0</b>	40	<b>40.0</b>
14	<b>14.0</b>	41	<b>41.0</b>
16	<b>16.0</b>	44	<b>44.0</b>
19	<b>19.0</b>	45	<b>45.0</b>
20	<b>20.0</b>	48	<b>48.0</b>
22	<b>22.0</b>	51	<b>51.0</b>
25	<b>25.0</b>		

NOTE: For lengths not listed, contact Lyn-Tron, Inc.

CODE	FINISH	CODE	FINISH
<b>00</b>	Plain — None	<b>33</b>	Black Zinc
<b>01</b>	Passivate MIL-F-14072-E300	<b>34*</b>	Zinc QQ-Z-325, Type II, CL 3 — Clear Chromate
<b>02</b>	Caustic Etch	<b>35</b>	Zinc QQ-Z-325, Type I, CL 3
<b>03</b>	Bright Dip — Brass	<b>36</b>	Zinc QQ-Z-325, Type II, CL 3 — Yellow Chromate
<b>11</b>	Anodize MIL-A-8625C, Type I Chromic Hot Water Seal — Dark Grey	<b>42</b>	Electro Tin MIL-T-10727, Type I (Dull)
<b>12</b>	Anodize MIL-A-8625C, Type II Sulphuric Hot Water Seal — Clear	<b>43</b>	Electro Tin MIL-T-10727 C, Type I (Bright)
<b>13</b>	Anodize MIL-A-8625C, Type II Sulphuric Dichromate Seal — Yellow Green	<b>44</b>	Electro Tin (Solder) MIL-F-14072 M230/M222
<b>14</b>	Anodize MIL-A-8625C — Black	<b>48</b>	Copper / Nickel / Bright Tin
<b>21</b>	Iridite MIL-C-5541 — Clear	<b>50</b>	Black Oxide MIL-C-13924 — Steel
<b>22*</b>	Iridite MIL-C-5541 — Gold #14	<b>51</b>	Black Oxide MIL-F-495 — Brass
<b>31</b>	Cadmium QQ-P-416, CL 2 — Clear Chromate	<b>52</b>	Black Oxide MIL-C-13924 — Stainless Steel
<b>32</b>	Cadmium QQ-P-416, CL 2 — Color Chromate	<b>61</b>	Nickel QQ-N-290 CL 1, Type VI KC
		<b>63</b>	Ductile Nickel
		<b>66</b>	Electroless Nickel
		<b>91</b>	Silver QQ-S-365

\*Standard finishes: Zinc (Clear Chromate) on brass material, Iridite (Gold #14) on aluminum material.

**B17**