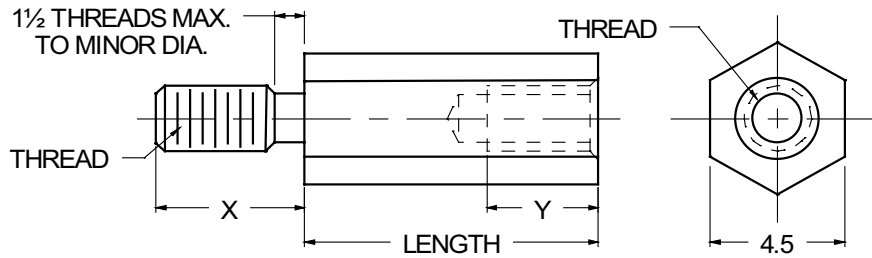




# 4.5mm HEX MALE-FEMALE STANDOFFS



<b>ORDERING CODE</b>	XX	XXXX	XXX	—	XX
	MATERIAL	BASIC PART NUMBER	LENGTH CODE		FINISH

MATERIAL	CODE
ALUMINUM	AL
BRASS	BR

NOTE: See Page B2 for additional materials and specifications.

THREAD SIZE	BASIC PART NO.
M2.5 x 0.45	5170
M3.0 x 0.5	5171

NOTE: Variance in sizes between male and female threads are available.

LENGTH mm	CODE	LENGTH mm	CODE
5	05.0	27	27.0
6	06.0	29	29.0
8	08.0	30	30.0
10	10.0	32	32.0
11	11.0	33	33.0
12	12.0	35	35.0
13	13.0	37	37.0
14	14.0	38	38.0
16	16.0	40	40.0
19	19.0	41	41.0
20	20.0	44	44.0
22	22.0	45	45.0
25	25.0	48	48.0
		51	51.0

NOTE: For lengths not listed, contact Lyn-Tron, Inc.

THREAD SIZE	"X" LENGTH	"Y" MIN. FULL THD. DEPTH	MIN. BODY LENGTH
M2.5 x 0.45	3.97	4.76	8.0
M3.0 x 0.5	4.76	6.35	9.5

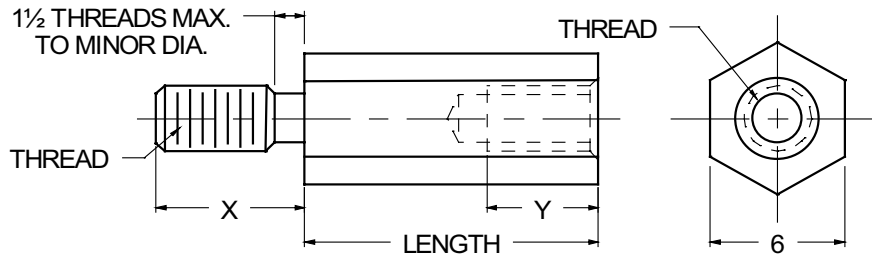
- NOTES:
- In short body lengths "Y" will be tapped to maximum depth.
  - Threads longer or shorter than "X" length are available.

CODE	FINISH	CODE	FINISH
00	Plain — None	33	Black Zinc
01	Passivate MIL-F-14072-E300	34*	Zinc QQ-Z-325, Type II, CL 3 — Clear Chromate
02	Caustic Etch	35	Zinc QQ-Z-325, Type I, CL 3
03	Bright Dip — Brass	36	Zinc QQ-Z-325, Type II, CL 3 — Yellow Chromate
11	Anodize MIL-A-8625C, Type I Chromic Hot Water Seal — Dark Grey	42	Electro Tin MIL-T-10727, Type I (Dull)
12	Anodize MIL-A-8625C, Type II Sulphuric Hot Water Seal — Clear	43	Electro Tin MIL-T-10727 C, Type I (Bright)
13	Anodize MIL-A-8625C, Type II Sulphuric Dichromate Seal — Yellow Green	44	Electro Tin (Solder) MIL-F-14072 M230/M222
14	Anodize MIL-A-8625C — Black	48	Copper / Nickel / Bright Tin
21	Iridite MIL-C-5541 — Clear	50	Black Oxide MIL-C-13924 — Steel
22*	Iridite MIL-C-5541 — Gold #14	51	Black Oxide MIL-F-495 — Brass
31	Cadmium QQ-P-416, CL 2 — Clear Chromate	52	Black Oxide MIL-C-13924 — Stainless Steel
32	Cadmium QQ-P-416, CL 2 — Color Chromate	61	Nickel QQ-N-290 CL 1, Type VI KC
		63	Ductile Nickel
		66	Electroless Nickel
		91	Silver QQ-S-365

\*Standard finishes: Zinc (Clear Chromate) on brass material, Iridite (Gold #14) on aluminum material.



# 6mm HEX MALE-FEMALE STANDOFFS



<b>ORDERING CODE</b>	XX	XXXX	XXX	—	XX
	MATERIAL	BASIC PART NUMBER	LENGTH CODE		FINISH

MATERIAL	CODE
ALUMINUM	AL
BRASS	BR
NYLON	NY
STAINLESS STEEL	SS
STEEL	ST

NOTE: See Page B2 for additional materials and specifications.

THREAD SIZE	BASIC PART NO.
M3.0 x 0.5	5172
M3.5 x 0.6	5173
M4.0 x 0.7	5174

NOTE: Variance in sizes between male and female threads are available.

LENGTH mm	CODE	LENGTH mm	CODE
6	06.0	29	29.0
8	08.0	30	30.0
10	10.0	32	32.0
11	11.0	33	33.0
12	12.0	35	35.0
13	13.0	37	37.0
14	14.0	38	38.0
16	16.0	40	40.0
19	19.0	41	41.0
20	20.0	44	44.0
22	22.0	45	45.0
25	25.0	48	48.0
27	27.0	51	51.0

NOTE: For lengths not listed, contact Lyn-Tron, Inc.

THREAD SIZE	"X" LENGTH	"Y" MIN. FULL THD. DEPTH	MIN. BODY LENGTH
M3.0 x 0.5	4.76	6.35	9.5
M3.5 x 0.6	6.35	9.53	12.7
M4.0 x 0.7	9.53	11.1	16.0

- NOTES:
- In short body lengths "Y" will be tapped to maximum depth.
  - Threads longer or shorter than "X" length are available.

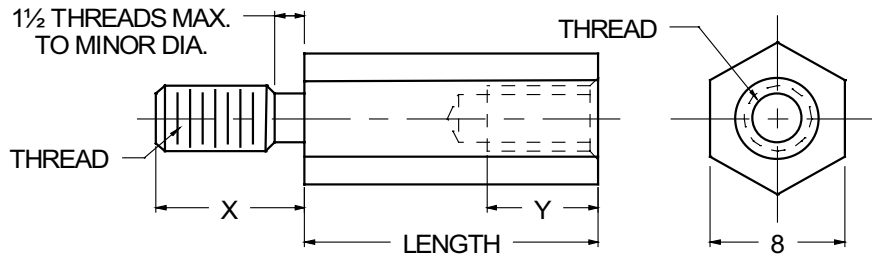
CODE	FINISH	CODE	FINISH
00	Plain — None	33	Black Zinc
01	Passivate MIL-F-14072-E300	34*	Zinc QQ-Z-325, Type II, CL 3 — Clear Chromate
02	Caustic Etch	35	Zinc QQ-Z-325, Type I, CL 3
03	Bright Dip — Brass	36	Zinc QQ-Z-325, Type II, CL 3 — Yellow Chromate
11	Anodize MIL-A-8625C, Type I Chromic Hot Water Seal — Dark Grey	42	Electro Tin MIL-T-10727, Type I (Dull)
12	Anodize MIL-A-8625C, Type II Sulphuric Hot Water Seal — Clear	43	Electro Tin MIL-T-10727 C, Type I (Bright)
13	Anodize MIL-A-8625C, Type II Sulphuric Dichromate Seal — Yellow Green	44	Electro Tin (Solder) MIL-F-14072 M230/M222
14	Anodize MIL-A-8625C — Black	48	Copper / Nickel / Bright Tin
21	Iridite MIL-C-5541 — Clear	50	Black Oxide MIL-C-13924 — Steel
22*	Iridite MIL-C-5541 — Gold #14	51	Black Oxide MIL-F-495 — Brass
31	Cadmium QQ-P-416, CL 2 — Clear Chromate	52	Black Oxide MIL-C-13924 — Stainless Steel
32	Cadmium QQ-P-416, CL 2 — Color Chromate	61	Nickel QQ-N-290 CL 1, Type VI KC
		63	Ductile Nickel
		66	Electroless Nickel
		91	Silver QQ-S-365

\*Standard finishes: Zinc (Clear Chromate) on brass material, Iridite (Gold #14) on aluminum material.

**B23**



# 8mm HEX MALE-FEMALE STANDOFFS



<b>ORDERING CODE</b>	XX MATERIAL	XXXX BASIC PART NUMBER	XXX LENGTH CODE	—	XX FINISH
----------------------	----------------	---------------------------	--------------------	---	--------------

MATERIAL	CODE
ALUMINUM	AL
BRASS	BR
STAINLESS STEEL	SS
STEEL	ST

NOTE: See Page B2 for additional materials and specifications.

THREAD SIZE	BASIC PART NO.
M3.5 x 0.6	5175
M4.0 x 0.7	5176
M5.0 x 0.8	5177

NOTE: Variance in sizes between male and female threads are available.

LENGTH mm	CODE	LENGTH mm	CODE
6	06.0	29	29.0
8	08.0	30	30.0
10	10.0	32	32.0
11	11.0	33	33.0
12	12.0	35	35.0
13	13.0	37	37.0
14	14.0	38	38.0
16	16.0	40	40.0
19	19.0	41	41.0
20	20.0	44	44.0
22	22.0	45	45.0
25	25.0	48	48.0
27	27.0	51	51.0

NOTE: For lengths not listed, contact Lyn-Tron, Inc.

THREAD SIZE	"X" LENGTH	"Y" MIN. FULL THD. DEPTH	MIN. BODY LENGTH
M3.5 x 0.6	6.35	9.53	12.7
M4.0 x 0.7	9.53	11.1	15.9
M5.0 x 0.8	9.53	12.7	16.5

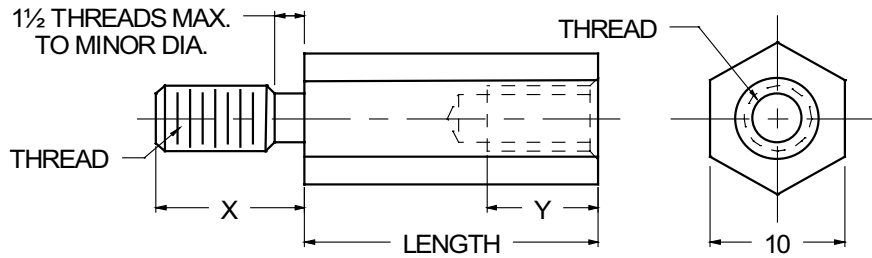
- NOTES:
1. In short body lengths "Y" will be tapped to maximum depth.
  2. Threads longer or shorter than "X" length are available.

CODE	FINISH	CODE	FINISH
00	Plain — None	33	Black Zinc
01	Passivate MIL-F-14072-E300	34*	Zinc QQ-Z-325, Type II, CL 3 — Clear Chromate
02	Caustic Etch	35	Zinc QQ-Z-325, Type I, CL 3
03	Bright Dip — Brass	36	Zinc QQ-Z-325, Type II, CL 3 — Yellow Chromate
11	Anodize MIL-A-8625C, Type I Chromic Hot Water Seal — Dark Grey	42	Electro Tin MIL-T-10727, Type I (Dull)
12	Anodize MIL-A-8625C, Type II Sulphuric Hot Water Seal — Clear	43	Electro Tin MIL-T-10727 C, Type I (Bright)
13	Anodize MIL-A-8625C, Type II Sulphuric Dichromate Seal — Yellow Green	44	Electro Tin (Solder) MIL-F-14072 M230/M222
14	Anodize MIL-A-8625C — Black	48	Copper / Nickel / Bright Tin
21	Iridite MIL-C-5541 — Clear	50	Black Oxide MIL-C-13924 — Steel
22*	Iridite MIL-C-5541 — Gold #14	51	Black Oxide MIL-F-495 — Brass
31	Cadmium QQ-P-416, CL 2 — Clear Chromate	52	Black Oxide MIL-C-13924 — Stainless Steel
32	Cadmium QQ-P-416, CL 2 — Color Chromate	61	Nickel QQ-N-290 CL 1, Type VI KC
		63	Ductile Nickel
		66	Electroless Nickel
		91	Silver QQ-S-365

\*Standard finishes: Zinc (Clear Chromate) on brass material, Iridite (Gold #14) on aluminum material.



# 10mm HEX MALE-FEMALE STANDOFFS



<b>ORDERING CODE</b>	XX	XXXX	XXX	—	XX
	MATERIAL	BASIC PART NUMBER	LENGTH CODE		FINISH

MATERIAL	CODE
ALUMINUM	AL
BRASS	BR
STAINLESS STEEL	SS
STEEL	ST

NOTE: See Page B2 for additional materials and specifications.

THREAD SIZE	BASIC PART NO.
M3.5 x 0.6	5178
M4.0 x 0.7	5179
M5.0 x 0.8	5180

NOTE: Variance in sizes between male and female threads are available.

LENGTH mm	CODE	LENGTH mm	CODE
6	06.0	29	29.0
8	08.0	30	30.0
10	10.0	32	32.0
11	11.0	33	33.0
12	12.0	35	35.0
13	13.0	37	37.0
14	14.0	38	38.0
16	16.0	40	40.0
19	19.0	41	41.0
20	20.0	44	44.0
22	22.0	45	45.0
25	25.0	48	48.0
27	27.0	51	51.0

NOTE: For lengths not listed, contact Lyn-Tron, Inc.

THREAD SIZE	"X" LENGTH	"Y" MIN. FULL THD. DEPTH	MIN. BODY LENGTH
M3.5 x 0.6	6.35	9.53	12.7
M4.0 x 0.7	9.53	11.1	15.9
M5.0 x 0.8	9.53	12.7	16.5

- NOTES:
- In short body lengths "Y" will be tapped to maximum depth.
  - Threads longer or shorter than "X" length are available.

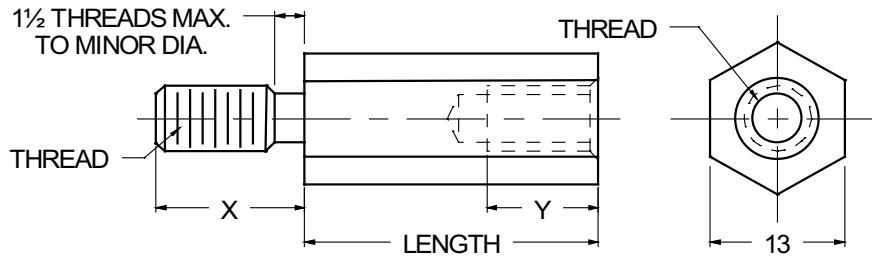
CODE	FINISH	CODE	FINISH
00	Plain — None	33	Black Zinc
01	Passivate MIL-F-14072-E300	34*	Zinc QQ-Z-325, Type II, CL 3 — Clear Chromate
02	Caustic Etch	35	Zinc QQ-Z-325, Type I, CL 3
03	Bright Dip — Brass	36	Zinc QQ-Z-325, Type II, CL 3 — Yellow Chromate
11	Anodize MIL-A-8625C, Type I Chromic Hot Water Seal — Dark Grey	42	Electro Tin MIL-T-10727, Type I (Dull)
12	Anodize MIL-A-8625C, Type II Sulphuric Hot Water Seal — Clear	43	Electro Tin MIL-T-10727 C, Type I (Bright)
13	Anodize MIL-A-8625C, Type II Sulphuric Dichromate Seal — Yellow Green	44	Electro Tin (Solder) MIL-F-14072 M230/M222
14	Anodize MIL-A-8625C — Black	48	Copper / Nickel / Bright Tin
21	Iridite MIL-C-5541 — Clear	50	Black Oxide MIL-C-13924 — Steel
22*	Iridite MIL-C-5541 — Gold #14	51	Black Oxide MIL-F-495 — Brass
31	Cadmium QQ-P-416, CL 2 — Clear Chromate	52	Black Oxide MIL-C-13924 — Stainless Steel
32	Cadmium QQ-P-416, CL 2 — Color Chromate	61	Nickel QQ-N-290 CL 1, Type VI KC
		63	Ductile Nickel
		66	Electroless Nickel
		91	Silver QQ-S-365

\*Standard finishes: Zinc (Clear Chromate) on brass material, Iridite (Gold #14) on aluminum material.

**B25**



# 13mm HEX MALE-FEMALE STANDOFFS



<b>ORDERING CODE</b>	XX	XXXX	XXX	—	XX
	MATERIAL	BASIC PART NUMBER	LENGTH CODE		FINISH

MATERIAL	CODE
BRASS	BR
ALUMINUM	AL
STAINLESS STEEL	SS

NOTE: See Page B2 for additional materials and specifications.

THREAD SIZE	BASIC PART NO.
M5.0 x 0.8	5181
M6.0 x 1.0	5182
M8.0 x 1.25	5183

NOTE: Variance in sizes between male and female threads are available.

LENGTH mm	CODE	LENGTH mm	CODE
6	06.0	29	29.0
8	08.0	30	30.0
10	10.0	32	32.0
11	11.0	33	33.0
12	12.0	35	35.0
13	13.0	37	37.0
14	14.0	38	38.0
16	16.0	40	40.0
19	19.0	41	41.0
20	20.0	44	44.0
22	22.0	45	45.0
25	25.0	48	48.0
27	27.0	51	51.0

NOTE: For lengths not listed, contact Lyn-Tron, Inc.

THREAD SIZE	"X" LENGTH	"Y" MIN. FULL THD. DEPTH	MIN. BODY LENGTH
M5.0 x 0.8	9.53	12.7	16.5
M6.0 x 1.0	12.7	15.0	19.3
M8.0 x 1.25	12.7	15.0	20.0

- NOTES:
- In short body lengths "Y" will be tapped to maximum depth.
  - Threads longer or shorter than "X" length are available.

CODE	FINISH	CODE	FINISH
00	Plain — None	33	Black Zinc
01	Passivate MIL-F-14072-E300	34*	Zinc QQ-Z-325, Type II, CL 3 — Clear Chromate
02	Caustic Etch	35	Zinc QQ-Z-325, Type I, CL 3
03	Bright Dip — Brass	36	Zinc QQ-Z-325, Type II, CL 3 — Yellow Chromate
11	Anodize MIL-A-8625C, Type I Chromic Hot Water Seal — Dark Grey	42	Electro Tin MIL-T-10727, Type I (Dull)
12	Anodize MIL-A-8625C, Type II Sulphuric Hot Water Seal — Clear	43	Electro Tin MIL-T-10727 C, Type I (Bright)
13	Anodize MIL-A-8625C, Type II Sulphuric Dichromate Seal — Yellow Green	44	Electro Tin (Solder) MIL-F-14072 M230/M222
14	Anodize MIL-A-8625C — Black	48	Copper / Nickel / Bright Tin
21	Iridite MIL-C-5541 — Clear	50	Black Oxide MIL-C-13924 — Steel
22*	Iridite MIL-C-5541 — Gold #14	51	Black Oxide MIL-F-495 — Brass
31	Cadmium QQ-P-416, CL 2 — Clear Chromate	52	Black Oxide MIL-C-13924 — Stainless Steel
32	Cadmium QQ-P-416, CL 2 — Color Chromate	61	Nickel QQ-N-290 CL 1, Type VI KC
		63	Ductile Nickel
		66	Electroless Nickel
		91	Silver QQ-S-365

\*Standard finishes: Zinc (Clear Chromate) on brass material, Iridite (Gold #14) on aluminum material.