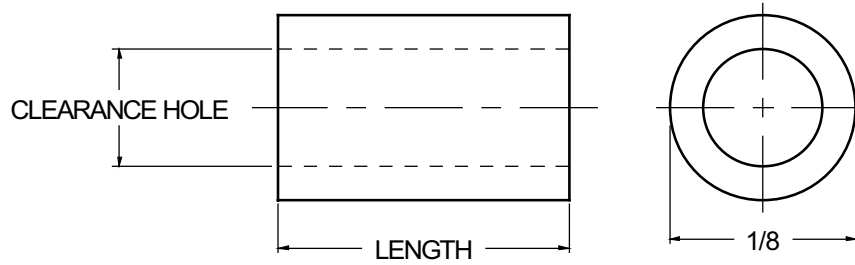




# 1/8 ROUND SPACERS



<b>ORDERING CODE</b>	<b>XX</b>	<b>XXXX</b>	<b>XX</b>	<b>X.XXX</b>	<b>XX</b>
	<b>MATERIAL</b>	<b>BASIC PART NUMBER</b>	<b>CLEARANCE CODE</b>	<b>LENGTH CODE</b>	<b>FINISH</b>

MATERIAL	CODE
ALUMINUM	<b>AL</b>
BRASS	<b>BR</b>
NYLON	<b>NY</b>
STAINLESS STEEL	<b>SS</b>
STEEL	<b>ST</b>

LENGTH	CODE
1/8	<b>0.125</b>
3/16	<b>0.187</b>
1/4	<b>0.250</b>
5/16	<b>0.312</b>
3/8	<b>0.375</b>
7/16	<b>0.437</b>
1/2	<b>0.500</b>

NOTE: See Page A4 for additional materials and specifications.

<b>BASIC PART NO.</b>
<b>6348</b>

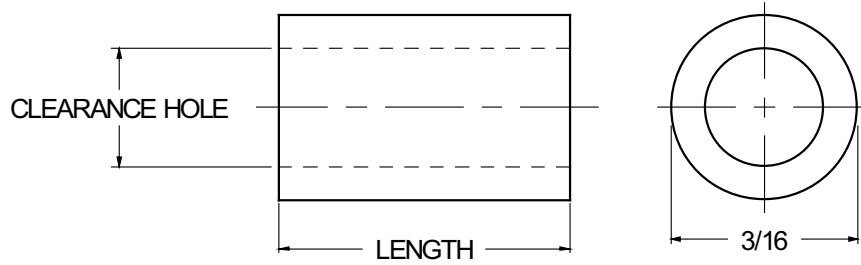
CLEARANCE HOLE	CODE
+ .010 / - .000	
.062	<b>00</b>
.088	<b>02</b>

CODE	FINISH	CODE	FINISH
<b>00</b>	Plain — None	<b>33</b>	Black Zinc
<b>01</b>	Passivate MIL-F-14072-E300	<b>34*</b>	Zinc QQ-Z-325, Type II, CL 3 — Clear Chromate
<b>02</b>	Caustic Etch	<b>35</b>	Zinc QQ-Z-325, Type I, CL 3
<b>03</b>	Bright Dip — Brass	<b>36</b>	Zinc QQ-Z-325, Type II, CL 3 — Yellow Chromate
<b>11</b>	Anodize MIL-A-8625C, Type I Chromic Hot Water Seal — Dark Grey	<b>42</b>	Electro Tin MIL-T-10727, Type I (Dull)
<b>12</b>	Anodize MIL-A-8625C, Type II Sulphuric Hot Water Seal — Clear	<b>43</b>	Electro Tin MIL-T-10727 C, Type I (Bright)
<b>13</b>	Anodize MIL-A-8625C, Type II Sulphuric Dichromate Seal — Yellow Green	<b>44</b>	Electro Tin (Solder) MIL-F-14072 M230/M222
<b>14</b>	Anodize MIL-A-8625C — Black	<b>48</b>	Copper / Nickel / Bright Tin
<b>21</b>	Iridite MIL-C-5541 — Clear	<b>50</b>	Black Oxide MIL-C-13924 — Steel
<b>22*</b>	Iridite MIL-C-5541 — Gold #14	<b>51</b>	Black Oxide MIL-F-495 — Brass
<b>31</b>	Cadmium QQ-P-416, CL 2 — Clear Chromate	<b>52</b>	Black Oxide MIL-C-13924 — Stainless Steel
<b>32</b>	Cadmium QQ-P-416, CL 2 — Color Chromate	<b>61</b>	Nickel QQ-N-290 CL 1, Type VI KC
		<b>63</b>	Ductile Nickel
		<b>66</b>	Electroless Nickel
		<b>91</b>	Silver QQ-S-365

\*Standard finishes: Zinc (Clear Chromate) on brass material, Iridite (Gold #14) on aluminum material.



# 3/16 ROUND SPACERS



<b>ORDERING CODE</b>	XX	XXXX	XX	X.XXX	XX
	MATERIAL	BASIC PART NUMBER	CLEARANCE CODE	LENGTH CODE	FINISH

MATERIAL	CODE
ALUMINUM	AL
BRASS	BR
NYLON	NY
STAINLESS STEEL	SS
STEEL	ST

NOTE: See Page A4 for additional materials and specifications.

BASIC PART NO.
6340

CLEARANCEHOLE	CODE
+ .010 / - .000	
.088	02
.114	04

LENGTH	CODE
1/8	0.125
3/16	0.187
1/4	0.250
5/16	0.312
3/8	0.375
7/16	0.437
1/2	0.500
9/16	0.562
5/8	0.625
11/16	0.687
3/4	0.750
13/16	0.812
7/8	0.875
15/16	0.937
1"	1.000

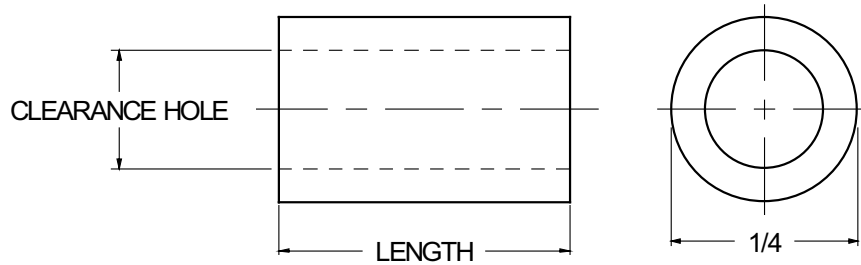
CODE	FINISH	CODE	FINISH
00	Plain — None	33	Black Zinc
01	Passivate MIL-F-14072-E300	34*	Zinc QQ-Z-325, Type II, CL 3 — Clear Chromate
02	Caustic Etch	35	Zinc QQ-Z-325, Type I, CL 3
03	Bright Dip — Brass	36	Zinc QQ-Z-325, Type II, CL 3 — Yellow Chromate
11	Anodize MIL-A-8625C, Type I Chromic Hot Water Seal — Dark Grey	42	Electro Tin MIL-T-10727, Type I (Dull)
12	Anodize MIL-A-8625C, Type II Sulphuric Hot Water Seal — Clear	43	Electro Tin MIL-T-10727 C, Type I (Bright)
13	Anodize MIL-A-8625C, Type II Sulphuric Dichromate Seal — Yellow Green	44	Electro Tin (Solder) MIL-F-14072 M230/M222
14	Anodize MIL-A-8625C — Black	48	Copper / Nickel / Bright Tin
21	Iridite MIL-C-5541 — Clear	50	Black Oxide MIL-C-13924 — Steel
22*	Iridite MIL-C-5541 — Gold #14	51	Black Oxide MIL-F-495 — Brass
31	Cadmium QQ-P-416, CL 2 — Clear Chromate	52	Black Oxide MIL-C-13924 — Stainless Steel
32	Cadmium QQ-P-416, CL 2 — Color Chromate	61	Nickel QQ-N-290 CL 1, Type VI KC
		63	Ductile Nickel
		66	Electroless Nickel
		91	Silver QQ-S-365

A7

\*Standard finishes: Zinc (Clear Chromate) on brass material, Iridite (Gold #14) on aluminum material.



# 1/4 ROUND SPACERS



<b>ORDERING CODE</b>	<b>XX</b>	<b>XXXX</b>	<b>XX</b>	<b>XXXX</b>	<b>XX</b>
	<b>MATERIAL</b>	<b>BASIC PART NUMBER</b>	<b>CLEARANCE CODE</b>	<b>LENGTH CODE</b>	<b>FINISH</b>

MATERIAL	CODE
ALUMINUM	<b>AL</b>
BRASS	<b>BR</b>
NYLON	<b>NY</b>
STAINLESS STEEL	<b>SS</b>
STEEL	<b>ST</b>

NOTE: See Page A4 for additional materials and specifications.

BASIC PART NO.
<b>6341</b>

CLEARANCE HOLE	CODE
+ .010 / - .000	
.114	<b>04</b>
.140	<b>06</b>
.166	<b>08</b>

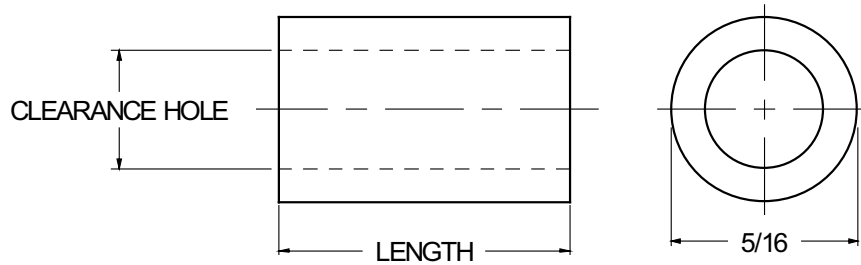
LENGTH	CODE	LENGTH	CODE
1/8	<b>0.125</b>	1"	<b>1.000</b>
3/16	<b>0.187</b>	1 1/16	<b>1.062</b>
1/4	<b>0.250</b>	1 1/8	<b>1.125</b>
5/16	<b>0.312</b>	1 3/16	<b>1.187</b>
3/8	<b>0.375</b>	1 1/4	<b>1.250</b>
7/16	<b>0.437</b>	1 5/16	<b>1.312</b>
1/2	<b>0.500</b>	1 3/8	<b>1.375</b>
9/16	<b>0.562</b>	1 7/16	<b>1.437</b>
5/8	<b>0.625</b>	1 1/2	<b>1.500</b>
11/16	<b>0.687</b>	1 9/16	<b>1.562</b>
3/4	<b>0.750</b>	1 5/8	<b>1.625</b>
13/16	<b>0.812</b>	1 11/16	<b>1.687</b>
7/8	<b>0.875</b>	1 3/4	<b>1.750</b>
15/16	<b>0.937</b>	1 13/16	<b>1.812</b>
		1 7/8	<b>1.875</b>
		1 15/16	<b>1.937</b>
		2"	<b>2.000</b>

CODE	FINISH	CODE	FINISH
<b>00</b>	Plain — None	<b>33</b>	Black Zinc
<b>01</b>	Passivate MIL-F-14072-E300	<b>34*</b>	Zinc QQ-Z-325, Type II, CL 3 — Clear Chromate
<b>02</b>	Caustic Etch	<b>35</b>	Zinc QQ-Z-325, Type I, CL 3
<b>03</b>	Bright Dip — Brass	<b>36</b>	Zinc QQ-Z-325, Type II, CL 3 — Yellow Chromate
<b>11</b>	Anodize MIL-A-8625C, Type I Chromic Hot Water Seal — Dark Grey	<b>42</b>	Electro Tin MIL-T-10727, Type I (Dull)
<b>12</b>	Anodize MIL-A-8625C, Type II Sulphuric Hot Water Seal — Clear	<b>43</b>	Electro Tin MIL-T-10727 C, Type I (Bright)
<b>13</b>	Anodize MIL-A-8625C, Type II Sulphuric Dichromate Seal — Yellow Green	<b>44</b>	Electro Tin (Solder) MIL-F-14072 M230/M222
<b>14</b>	Anodize MIL-A-8625C — Black	<b>48</b>	Copper / Nickel / Bright Tin
<b>21</b>	Iridite MIL-C-5541 — Clear	<b>50</b>	Black Oxide MIL-C-13924 — Steel
<b>22*</b>	Iridite MIL-C-5541 — Gold #14	<b>51</b>	Black Oxide MIL-F-495 — Brass
<b>31</b>	Cadmium QQ-P-416, CL 2 — Clear Chromate	<b>52</b>	Black Oxide MIL-C-13924 — Stainless Steel
<b>32</b>	Cadmium QQ-P-416, CL 2 — Color Chromate	<b>61</b>	Nickel QQ-N-290 CL 1, Type VI KC
		<b>63</b>	Ductile Nickel
		<b>66</b>	Electroless Nickel
		<b>91</b>	Silver QQ-S-365

\*Standard finishes: Zinc (Clear Chromate) on brass material, Iridite (Gold #14) on aluminum material.



# 5/16 ROUND SPACERS



<b>ORDERING CODE</b>	XX	XXXX	XX	XXXX	XX
	MATERIAL	BASIC PART NUMBER	CLEARANCE CODE	LENGTH CODE	FINISH

MATERIAL	CODE
ALUMINUM	AL
BRASS	BR
NYLON	NY
STAINLESS STEEL	SS
STEEL	ST

NOTE: See Page A4 for additional materials and specifications.

<b>BASIC PART NO.</b>
6342

CLEARANCE HOLE	CODE
+ .010 / - .000	
.140	06
.166	08
.192	10

LENGTH	CODE	LENGTH	CODE
1/8	0.125	1"	1.000
3/16	0.187	1 1/16	1.062
1/4	0.250	1 1/8	1.125
5/16	0.312	1 3/16	1.187
3/8	0.375	1 1/4	1.250
7/16	0.437	1 5/16	1.312
1/2	0.500	1 3/8	1.375
9/16	0.562	1 7/16	1.437
5/8	0.625	1 1/2	1.500
11/16	0.687	1 9/16	1.562
3/4	0.750	1 5/8	1.625
13/16	0.812	1 11/16	1.687
7/8	0.875	1 3/4	1.750
15/16	0.937	1 13/16	1.812
		1 7/8	1.875
		1 15/16	1.937
		2"	2.000

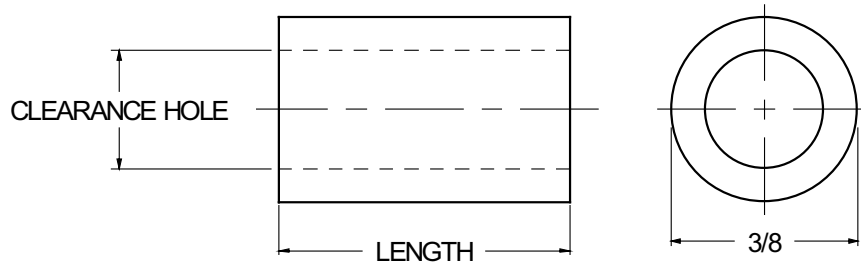
CODE	FINISH	CODE	FINISH
00	Plain — None	33	Black Zinc
01	Passivate MIL-F-14072-E300	34*	Zinc QQ-Z-325, Type II, CL 3 — Clear Chromate
02	Caustic Etch	35	Zinc QQ-Z-325, Type I, CL 3
03	Bright Dip — Brass	36	Zinc QQ-Z-325, Type II, CL 3 — Yellow Chromate
11	Anodize MIL-A-8625C, Type I Chromic Hot Water Seal — Dark Grey	42	Electro Tin MIL-T-10727, Type I (Dull)
12	Anodize MIL-A-8625C, Type II Sulphuric Hot Water Seal — Clear	43	Electro Tin MIL-T-10727 C, Type I (Bright)
13	Anodize MIL-A-8625C, Type II Sulphuric Dichromate Seal — Yellow Green	44	Electro Tin (Solder) MIL-F-14072 M230/M222
14	Anodize MIL-A-8625C — Black	48	Copper / Nickel / Bright Tin
21	Iridite MIL-C-5541 — Clear	50	Black Oxide MIL-C-13924 — Steel
22*	Iridite MIL-C-5541 — Gold #14	51	Black Oxide MIL-F-495 — Brass
31	Cadmium QQ-P-416, CL 2 — Clear Chromate	52	Black Oxide MIL-C-13924 — Stainless Steel
32	Cadmium QQ-P-416, CL 2 — Color Chromate	61	Nickel QQ-N-290 CL 1, Type VI KC
		63	Ductile Nickel
		66	Electroless Nickel
		91	Silver QQ-S-365

A9

\*Standard finishes: Zinc (Clear Chromate) on brass material, Iridite (Gold #14) on aluminum material.



# 3/8 ROUND SPACERS



<b>ORDERING CODE</b>	XX MATERIAL	XXXX BASIC PART NUMBER	XX CLEARANCE CODE	XXXX LENGTH CODE	XX FINISH
----------------------	----------------	---------------------------	----------------------	---------------------	--------------

MATERIAL	CODE
ALUMINUM	<b>AL</b>
BRASS	<b>BR</b>
NYLON	<b>NY</b>
STAINLESS STEEL	<b>SS</b>
STEEL	<b>ST</b>

NOTE: See Page A4 for additional materials and specifications.

BASIC PART NO.
<b>6343</b>

CLEARANCEHOLE +.010 / -.000	CODE
.140	<b>06</b>
.166	<b>08</b>
.192	<b>10</b>

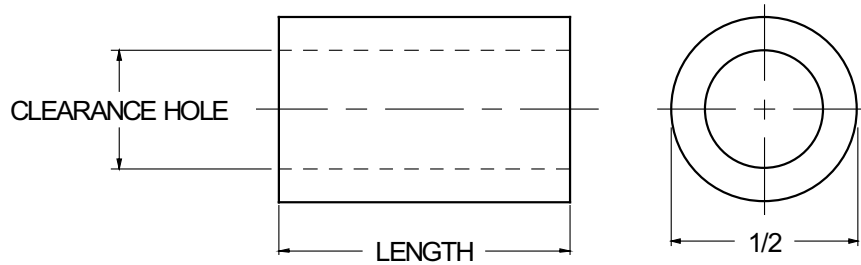
LENGTH	CODE	LENGTH	CODE
1/8	<b>0.125</b>	1"	<b>1.000</b>
3/16	<b>0.187</b>	1 1/16	<b>1.062</b>
1/4	<b>0.250</b>	1 1/8	<b>1.125</b>
5/16	<b>0.312</b>	1 3/16	<b>1.187</b>
3/8	<b>0.375</b>	1 1/4	<b>1.250</b>
7/16	<b>0.437</b>	1 5/16	<b>1.312</b>
1/2	<b>0.500</b>	1 3/8	<b>1.375</b>
9/16	<b>0.562</b>	1 7/16	<b>1.437</b>
5/8	<b>0.625</b>	1 1/2	<b>1.500</b>
11/16	<b>0.687</b>	1 9/16	<b>1.562</b>
3/4	<b>0.750</b>	1 5/8	<b>1.625</b>
13/16	<b>0.812</b>	1 11/16	<b>1.687</b>
7/8	<b>0.875</b>	1 3/4	<b>1.750</b>
15/16	<b>0.937</b>	1 13/16	<b>1.812</b>
		1 7/8	<b>1.875</b>
		1 15/16	<b>1.937</b>
		2"	<b>2.000</b>

CODE	FINISH	CODE	FINISH
<b>00</b>	Plain — None	<b>33</b>	Black Zinc
<b>01</b>	Passivate MIL-F-14072-E300	<b>34*</b>	Zinc QQ-Z-325, Type II, CL 3 — Clear Chromate
<b>02</b>	Caustic Etch	<b>35</b>	Zinc QQ-Z-325, Type I, CL 3
<b>03</b>	Bright Dip — Brass	<b>36</b>	Zinc QQ-Z-325, Type II, CL 3 — Yellow Chromate
<b>11</b>	Anodize MIL-A-8625C, Type I Chromic Hot Water Seal — Dark Grey	<b>42</b>	Electro Tin MIL-T-10727, Type I (Dull)
<b>12</b>	Anodize MIL-A-8625C, Type II Sulphuric Hot Water Seal — Clear	<b>43</b>	Electro Tin MIL-T-10727 C, Type I (Bright)
<b>13</b>	Anodize MIL-A-8625C, Type II Sulphuric Dichromate Seal — Yellow Green	<b>44</b>	Electro Tin (Solder) MIL-F-14072 M230/M222
<b>14</b>	Anodize MIL-A-8625C — Black	<b>48</b>	Copper / Nickel / Bright Tin
<b>21</b>	Iridite MIL-C-5541 — Clear	<b>50</b>	Black Oxide MIL-C-13924 — Steel
<b>22*</b>	Iridite MIL-C-5541 — Gold #14	<b>51</b>	Black Oxide MIL-F-495 — Brass
<b>31</b>	Cadmium QQ-P-416, CL 2 — Clear Chromate	<b>52</b>	Black Oxide MIL-C-13924 — Stainless Steel
<b>32</b>	Cadmium QQ-P-416, CL 2 — Color Chromate	<b>61</b>	Nickel QQ-N-290 CL 1, Type VI KC
		<b>63</b>	Ductile Nickel
		<b>66</b>	Electroless Nickel
		<b>91</b>	Silver QQ-S-365

\*Standard finishes: Zinc (Clear Chromate) on brass material, Iridite (Gold #14) on aluminum material.



# 1/2 ROUND SPACERS



<b>ORDERING CODE</b>	XX	XXXX	XX	XXX	XX
	MATERIAL	BASIC PART NUMBER	CLEARANCE CODE	LENGTH CODE	FINISH

MATERIAL	CODE
ALUMINUM	<b>AL</b>
BRASS	<b>BR</b>
NYLON	<b>NY</b>
STAINLESS STEEL	<b>SS</b>
STEEL	<b>ST</b>

NOTE: See Page A4 for additional materials and specifications.

<b>BASIC PART NO.</b>
<b>6345</b>

CLEARANCEHOLE	CODE
+ .010 / - .000	
.166	<b>08</b>
.192	<b>10</b>
.218	<b>12</b>
.252	<b>25</b>

LENGTH	CODE	LENGTH	CODE
1/8	<b>0.125</b>	1"	<b>1.000</b>
3/16	<b>0.187</b>	1 1/16	<b>1.062</b>
1/4	<b>0.250</b>	1 1/8	<b>1.125</b>
5/16	<b>0.312</b>	1 3/16	<b>1.187</b>
3/8	<b>0.375</b>	1 1/4	<b>1.250</b>
7/16	<b>0.437</b>	1 5/16	<b>1.312</b>
1/2	<b>0.500</b>	1 3/8	<b>1.375</b>
9/16	<b>0.562</b>	1 7/16	<b>1.437</b>
5/8	<b>0.625</b>	1 1/2	<b>1.500</b>
11/16	<b>0.687</b>	1 9/16	<b>1.562</b>
3/4	<b>0.750</b>	1 5/8	<b>1.625</b>
13/16	<b>0.812</b>	1 11/16	<b>1.687</b>
7/8	<b>0.875</b>	1 3/4	<b>1.750</b>
15/16	<b>0.937</b>	1 13/16	<b>1.812</b>
		1 7/8	<b>1.875</b>
		1 15/16	<b>1.937</b>
		2"	<b>2.000</b>

NOTE: For lengths not listed, contact Lyn-Tron, Inc.

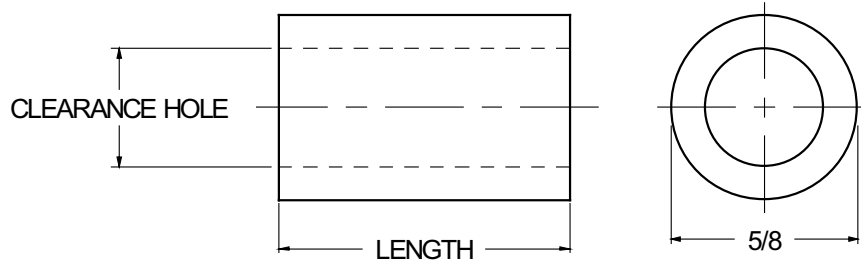
CODE	FINISH	CODE	FINISH
<b>00</b>	Plain — None	<b>33</b>	Black Zinc
<b>01</b>	Passivate MIL-F-14072-E300	<b>34*</b>	Zinc QQ-Z-325, Type II, CL 3 — Clear Chromate
<b>02</b>	Caustic Etch	<b>35</b>	Zinc QQ-Z-325, Type I, CL 3
<b>03</b>	Bright Dip — Brass	<b>36</b>	Zinc QQ-Z-325, Type II, CL 3 — Yellow Chromate
<b>11</b>	Anodize MIL-A-8625C, Type I Chromic Hot Water Seal — Dark Grey	<b>42</b>	Electro Tin MIL-T-10727, Type I (Dull)
<b>12</b>	Anodize MIL-A-8625C, Type II Sulphuric Hot Water Seal — Clear	<b>43</b>	Electro Tin MIL-T-10727 C, Type I (Bright)
<b>13</b>	Anodize MIL-A-8625C, Type II Sulphuric Dichromate Seal — Yellow Green	<b>44</b>	Electro Tin (Solder) MIL-F-14072 M230/M222
<b>14</b>	Anodize MIL-A-8625C — Black	<b>48</b>	Copper / Nickel / Bright Tin
<b>21</b>	Iridite MIL-C-5541 — Clear	<b>50</b>	Black Oxide MIL-C-13924 — Steel
<b>22*</b>	Iridite MIL-C-5541 — Gold #14	<b>51</b>	Black Oxide MIL-F-495 — Brass
<b>31</b>	Cadmium QQ-P-416, CL 2 — Clear Chromate	<b>52</b>	Black Oxide MIL-C-13924 — Stainless Steel
<b>32</b>	Cadmium QQ-P-416, CL 2 — Color Chromate	<b>61</b>	Nickel QQ-N-290 CL 1, Type VI KC
		<b>63</b>	Ductile Nickel
		<b>66</b>	Electroless Nickel
		<b>91</b>	Silver QQ-S-365

\*Standard finishes: Zinc (Clear Chromate) on brass material, Iridite (Gold #14) on aluminum material.

**A11**



# 5/8 ROUND SPACERS



<b>ORDERING CODE</b>	XX	XXXX	XX	XXXX	XX
	MATERIAL	BASIC PART NUMBER	CLEARANCE CODE	LENGTH CODE	FINISH

MATERIAL	CODE
ALUMINUM	AL
BRASS	BR
NYLON	NY
STAINLESS STEEL	SS
STEEL	ST

NOTE: See Page A4 for additional materials and specifications.

<b>BASIC PART NO.</b>
6346

CLEARANCEHOLE	CODE
+ .010 / - .000	
.192	10
.218	12
.252	25
.315	31
.377	38

LENGTH	CODE	LENGTH	CODE
1/8	0.125	1"	1.000
3/16	0.187	1 1/16	1.062
1/4	0.250	1 1/8	1.125
5/16	0.312	1 3/16	1.187
3/8	0.375	1 1/4	1.250
7/16	0.437	1 5/16	1.312
1/2	0.500	1 3/8	1.375
9/16	0.562	1 7/16	1.437
5/8	0.625	1 1/2	1.500
11/16	0.687	1 9/16	1.562
3/4	0.750	1 5/8	1.625
13/16	0.812	1 11/16	1.687
7/8	0.875	1 3/4	1.750
15/16	0.937	1 13/16	1.812
		1 7/8	1.875
		1 15/16	1.937
		2"	2.000

CODE	FINISH	CODE	FINISH
00	Plain — None	33	Black Zinc
01	Passivate MIL-F-14072-E300	34*	Zinc QQ-Z-325, Type II, CL 3 — Clear Chromate
02	Caustic Etch	35	Zinc QQ-Z-325, Type I, CL 3
03	Bright Dip — Brass	36	Zinc QQ-Z-325, Type II, CL 3 — Yellow Chromate
11	Anodize MIL-A-8625C, Type I Chromic Hot Water Seal — Dark Grey	42	Electro Tin MIL-T-10727, Type I (Dull)
12	Anodize MIL-A-8625C, Type II Sulphuric Hot Water Seal — Clear	43	Electro Tin MIL-T-10727 C, Type I (Bright)
13	Anodize MIL-A-8625C, Type II Sulphuric Dichromate Seal — Yellow Green	44	Electro Tin (Solder) MIL-F-14072 M230/M222
14	Anodize MIL-A-8625C — Black	48	Copper / Nickel / Bright Tin
21	Iridite MIL-C-5541 — Clear	50	Black Oxide MIL-C-13924 — Steel
22*	Iridite MIL-C-5541 — Gold #14	51	Black Oxide MIL-F-495 — Brass
31	Cadmium QQ-P-416, CL 2 — Clear Chromate	52	Black Oxide MIL-C-13924 — Stainless Steel
32	Cadmium QQ-P-416, CL 2 — Color Chromate	61	Nickel QQ-N-290 CL 1, Type VI KC
		63	Ductile Nickel
		66	Electroless Nickel
		91	Silver QQ-S-365

\*Standard finishes: Zinc (Clear Chromate) on brass material, Iridite (Gold #14) on aluminum material.