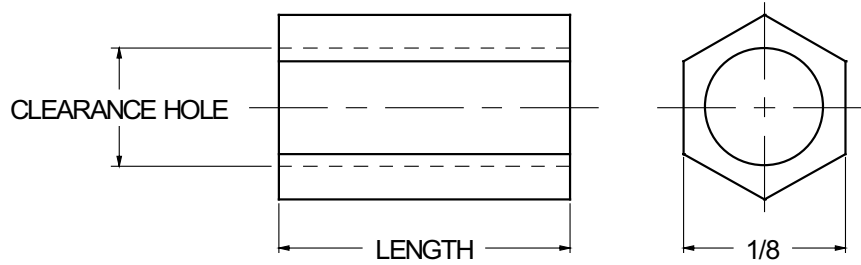




1/8 HEX SPACERS



| | | | | | |
|----------------------|----------|-------------------|----------------|-------------|--------|
| ORDERING CODE | XX | XXXX | XX | XXXX | XX |
| | MATERIAL | BASIC PART NUMBER | CLEARANCE CODE | LENGTH CODE | FINISH |

| MATERIAL | CODE |
|-----------------|-----------|
| BRASS | BR |
| STAINLESS STEEL | SS |
| STEEL | ST |

NOTE: See Page A4 for additional materials and specifications.

| LENGTH | CODE |
|--------|--------------|
| 1/8 | 0.125 |
| 3/16 | 0.187 |
| 1/4 | 0.250 |
| 5/16 | 0.312 |
| 3/8 | 0.375 |
| 7/16 | 0.437 |
| 1/2 | 0.500 |

| BASIC PART NO. |
|----------------|
| 6358 |

| CLEARANCEHOLE | CODE |
|-----------------|-----------|
| + .010 / - .000 | |
| .062 | 00 |
| .088 | 02 |

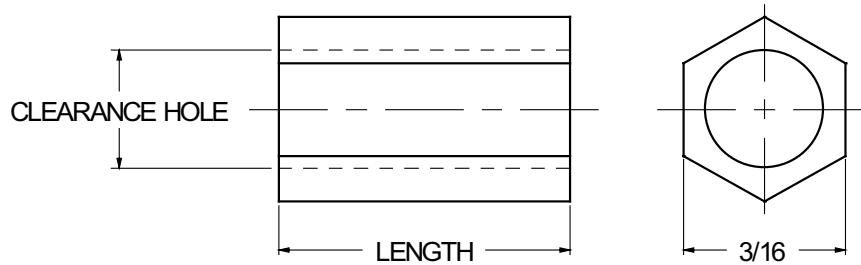
| CODE | FINISH | CODE | FINISH |
|------------|--|------------|--|
| 00 | Plain — None | 33 | Black Zinc |
| 01 | Passivate MIL-F-14072-E300 | 34* | Zinc QQ-Z-325, Type II, CL 3 — Clear Chromate |
| 02 | Caustic Etch | 35 | Zinc QQ-Z-325, Type I, CL 3 |
| 03 | Bright Dip — Brass | 36 | Zinc QQ-Z-325, Type II, CL 3 — Yellow Chromate |
| 11 | Anodize MIL-A-8625C, Type I Chromic Hot Water Seal — Dark Grey | 42 | Electro Tin MIL-T-10727, Type I (Dull) |
| 12 | Anodize MIL-A-8625C, Type II Sulphuric Hot Water Seal — Clear | 43 | Electro Tin MIL-T-10727 C, Type I (Bright) |
| 13 | Anodize MIL-A-8625C, Type II Sulphuric Dichromate Seal — Yellow Green | 44 | Electro Tin (Solder) MIL-F-14072 M230/M222 |
| 14 | Anodize MIL-A-8625C — Black | 48 | Copper / Nickel / Bright Tin |
| 21 | Iridite MIL-C-5541 — Clear | 50 | Black Oxide MIL-C-13924 — Steel |
| 22* | Iridite MIL-C-5541 — Gold #14 | 51 | Black Oxide MIL-F-495 — Brass |
| 31 | Cadmium QQ-P-416, CL 2 — Clear Chromate | 52 | Black Oxide MIL-C-13924 — Stainless Steel |
| 32 | Cadmium QQ-P-416, CL 2 — Color Chromate | 61 | Nickel QQ-N-290 CL 1, Type VI KC |
| | | 63 | Ductile Nickel |
| | | 66 | Electroless Nickel |
| | | 91 | Silver QQ-S-365 |

*Standard finishes: Zinc (Clear Chromate) on brass material, Iridite (Gold #14) on aluminum material.

A13



3/16 HEX SPACERS



| | | | | | |
|----------------------|-----------------|--------------------------|-----------------------|--------------------|---------------|
| ORDERING CODE | XX | XXXX | XX | XXXX | XX |
| | MATERIAL | BASIC PART NUMBER | CLEARANCE CODE | LENGTH CODE | FINISH |

| MATERIAL | CODE |
|-----------------|-----------|
| ALUMINUM | AL |
| BRASS | BR |
| STAINLESS STEEL | SS |
| STEEL | ST |

NOTE: See Page A4 for additional materials and specifications.

| BASIC PART NO. |
|----------------|
| 6350 |

| CLEARANCEHOLE | CODE |
|-----------------|-----------|
| + .010 / - .000 | |
| .088 | 02 |
| .114 | 04 |

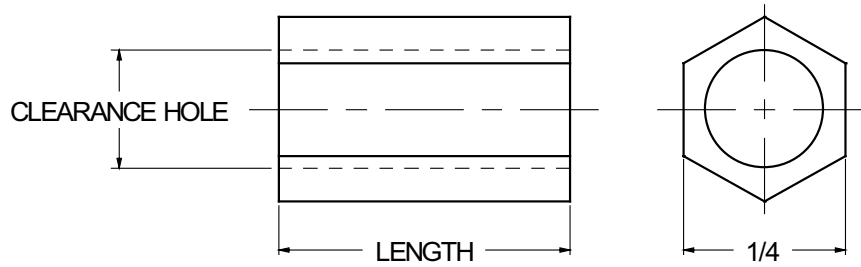
| LENGTH | CODE |
|--------|--------------|
| 1/8 | 0.125 |
| 3/16 | 0.187 |
| 1/4 | 0.250 |
| 5/16 | 0.312 |
| 3/8 | 0.375 |
| 7/16 | 0.437 |
| 1/2 | 0.500 |
| 9/16 | 0.562 |
| 5/8 | 0.625 |
| 11/16 | 0.687 |
| 3/4 | 0.750 |
| 13/16 | 0.812 |
| 7/8 | 0.875 |
| 15/16 | 0.937 |
| 1" | 1.000 |

| CODE | FINISH | CODE | FINISH |
|------------|--|------------|--|
| 00 | Plain — None | 33 | Black Zinc |
| 01 | Passivate MIL-F-14072-E300 | 34* | Zinc QQ-Z-325, Type II, CL 3 — Clear Chromate |
| 02 | Caustic Etch | 35 | Zinc QQ-Z-325, Type I, CL 3 |
| 03 | Bright Dip — Brass | 36 | Zinc QQ-Z-325, Type II, CL 3 — Yellow Chromate |
| 11 | Anodize MIL-A-8625C, Type I Chromic Hot Water Seal — Dark Grey | 42 | Electro Tin MIL-T-10727, Type I (Dull) |
| 12 | Anodize MIL-A-8625C, Type II Sulphuric Hot Water Seal — Clear | 43 | Electro Tin MIL-T-10727 C, Type I (Bright) |
| 13 | Anodize MIL-A-8625C, Type II Sulphuric Dichromate Seal — Yellow Green | 44 | Electro Tin (Solder) MIL-F-14072 M230/M222 |
| 14 | Anodize MIL-A-8625C — Black | 48 | Copper / Nickel / Bright Tin |
| 21 | Iridite MIL-C-5541 — Clear | 50 | Black Oxide MIL-C-13924 — Steel |
| 22* | Iridite MIL-C-5541 — Gold #14 | 51 | Black Oxide MIL-F-495 — Brass |
| 31 | Cadmium QQ-P-416, CL 2 — Clear Chromate | 52 | Black Oxide MIL-C-13924 — Stainless Steel |
| 32 | Cadmium QQ-P-416, CL 2 — Color Chromate | 61 | Nickel QQ-N-290 CL 1, Type VI CC |
| | | 63 | Ductile Nickel |
| | | 66 | Electroless Nickel |
| | | 91 | Silver QQ-S-365 |

*Standard finishes: Zinc (Clear Chromate) on brass material, Iridite (Gold #14) on aluminum material.



1/4 HEX SPACERS



| | | | | | |
|----------------------|----------|-------------------|----------------|-------------|--------|
| ORDERING CODE | XX | XXXX | XX | XXXX | XX |
| | MATERIAL | BASIC PART NUMBER | CLEARANCE CODE | LENGTH CODE | FINISH |

| MATERIAL | CODE |
|-----------------|------|
| ALUMINUM | AL |
| BRASS | BR |
| NYLON | NY |
| STAINLESS STEEL | SS |
| STEEL | ST |

NOTE: See Page A4 for additional materials and specifications.

| BASIC PART NO. |
|----------------|
| 6351 |

| CLEARANCEHOLE | CODE |
|----------------|------|
| + .010 / -.000 | |
| .114 | 04 |
| .140 | 06 |
| .166 | 08 |

| LENGTH | CODE | LENGTH | CODE |
|--------|-------|---------|-------|
| 1/8 | 0.125 | 1" | 1.000 |
| 3/16 | 0.187 | 1 1/16 | 1.062 |
| 1/4 | 0.250 | 1 1/8 | 1.125 |
| 5/16 | 0.312 | 1 3/16 | 1.187 |
| 3/8 | 0.375 | 1 1/4 | 1.250 |
| 7/16 | 0.437 | 1 5/16 | 1.312 |
| 1/2 | 0.500 | 1 3/8 | 1.375 |
| 9/16 | 0.562 | 1 7/16 | 1.437 |
| 5/8 | 0.625 | 1 1/2 | 1.500 |
| 11/16 | 0.687 | 1 9/16 | 1.562 |
| 3/4 | 0.750 | 1 5/8 | 1.625 |
| 13/16 | 0.812 | 1 11/16 | 1.687 |
| 7/8 | 0.875 | 1 3/4 | 1.750 |
| 15/16 | 0.937 | 1 13/16 | 1.812 |
| | | 1 7/8 | 1.875 |
| | | 1 15/16 | 1.937 |
| | | 2" | 2.000 |

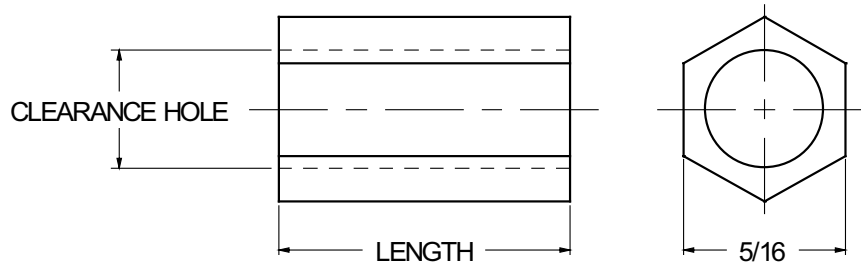
| CODE | FINISH | CODE | FINISH |
|------|--|------|--|
| 00 | Plain — None | 33 | Black Zinc |
| 01 | Passivate MIL-F-14072-E300 | 34* | Zinc QQ-Z-325, Type II, CL 3 — Clear Chromate |
| 02 | Caustic Etch | 35 | Zinc QQ-Z-325, Type I, CL 3 |
| 03 | Bright Dip — Brass | 36 | Zinc QQ-Z-325, Type II, CL 3 — Yellow Chromate |
| 11 | Anodize MIL-A-8625C, Type I Chromic Hot Water Seal — Dark Grey | 42 | Electro Tin MIL-T-10727, Type I (Dull) |
| 12 | Anodize MIL-A-8625C, Type II Sulphuric Hot Water Seal — Clear | 43 | Electro Tin MIL-T-10727 C, Type I (Bright) |
| 13 | Anodize MIL-A-8625C, Type II Sulphuric Dichromate Seal — Yellow Green | 44 | Electro Tin (Solder) MIL-F-14072 M230/M222 |
| 14 | Anodize MIL-A-8625C — Black | 48 | Copper / Nickel / Bright Tin |
| 21 | Iridite MIL-C-5541 — Clear | 50 | Black Oxide MIL-C-13924 — Steel |
| 22* | Iridite MIL-C-5541 — Gold #14 | 51 | Black Oxide MIL-F-495 — Brass |
| 31 | Cadmium QQ-P-416, CL 2 — Clear Chromate | 52 | Black Oxide MIL-C-13924 — Stainless Steel |
| 32 | Cadmium QQ-P-416, CL 2 — Color Chromate | 61 | Nickel QQ-N-290 CL 1, Type VI KC |
| | | 63 | Ductile Nickel |
| | | 66 | Electroless Nickel |
| | | 91 | Silver QQ-S-365 |

*Standard finishes: Zinc (Clear Chromate) on brass material, Iridite (Gold #14) on aluminum material.

A15



5/16 HEX SPACERS



| | | | | | |
|----------------------|-----------|-------------------|----------------|-------------|-----------|
| ORDERING CODE | XX | XXXX | XX | XXXX | XX |
| | MATERIAL | BASIC PART NUMBER | CLEARANCE CODE | LENGTH CODE | FINISH |

| MATERIAL | CODE |
|-----------------|-----------|
| ALUMINUM | AL |
| BRASS | BR |
| STAINLESS STEEL | SS |
| STEEL | ST |

NOTE: See Page A4 for additional materials and specifications.

| |
|-----------------------|
| BASIC PART NO. |
| 6352 |

| CLEARANCEHOLE | CODE |
|-----------------|-----------|
| + .010 / - .000 | |
| .140 | 06 |
| .166 | 08 |
| .192 | 10 |

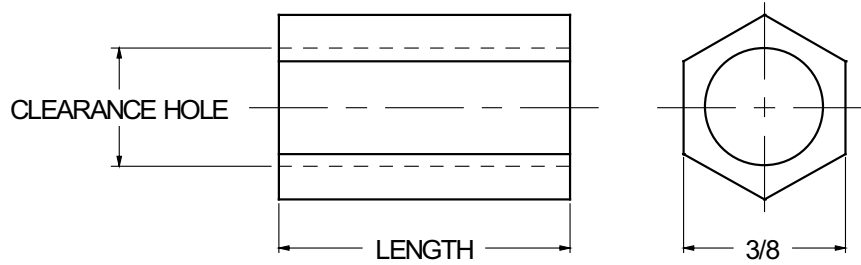
| LENGTH | CODE | LENGTH | CODE |
|--------|--------------|---------|--------------|
| 1/8 | 0.125 | 1" | 1.000 |
| 3/16 | 0.187 | 1 1/16 | 1.062 |
| 1/4 | 0.250 | 1 1/8 | 1.125 |
| 5/16 | 0.312 | 1 3/16 | 1.187 |
| 3/8 | 0.375 | 1 1/4 | 1.250 |
| 7/16 | 0.437 | 1 5/16 | 1.312 |
| 1/2 | 0.500 | 1 3/8 | 1.375 |
| 9/16 | 0.562 | 1 7/16 | 1.437 |
| 5/8 | 0.625 | 1 1/2 | 1.500 |
| 11/16 | 0.687 | 1 9/16 | 1.562 |
| 3/4 | 0.750 | 1 5/8 | 1.625 |
| 13/16 | 0.812 | 1 11/16 | 1.687 |
| 7/8 | 0.875 | 1 3/4 | 1.750 |
| 15/16 | 0.937 | 1 13/16 | 1.812 |
| | | 1 7/8 | 1.875 |
| | | 1 15/16 | 1.937 |
| | | 2" | 2.000 |

| CODE | FINISH | CODE | FINISH |
|------------|--|------------|--|
| 00 | Plain — None | 33 | Black Zinc |
| 01 | Passivate MIL-F-14072-E300 | 34* | Zinc QQ-Z-325, Type II, CL 3 — Clear Chromate |
| 02 | Caustic Etch | 35 | Zinc QQ-Z-325, Type I, CL 3 |
| 03 | Bright Dip — Brass | 36 | Zinc QQ-Z-325, Type II, CL 3 — Yellow Chromate |
| 11 | Anodize MIL-A-8625C, Type I Chromic Hot Water Seal — Dark Grey | 42 | Electro Tin MIL-T-10727, Type I (Dull) |
| 12 | Anodize MIL-A-8625C, Type II Sulphuric Hot Water Seal — Clear | 43 | Electro Tin MIL-T-10727 C, Type I (Bright) |
| 13 | Anodize MIL-A-8625C, Type II Sulphuric Dichromate Seal — Yellow Green | 44 | Electro Tin (Solder) MIL-F-14072 M230/M222 |
| 14 | Anodize MIL-A-8625C — Black | 48 | Copper / Nickel / Bright Tin |
| 21 | Iridite MIL-C-5541 — Clear | 50 | Black Oxide MIL-C-13924 — Steel |
| 22* | Iridite MIL-C-5541 — Gold #14 | 51 | Black Oxide MIL-F-495 — Brass |
| 31 | Cadmium QQ-P-416, CL 2 — Clear Chromate | 52 | Black Oxide MIL-C-13924 — Stainless Steel |
| 32 | Cadmium QQ-P-416, CL 2 — Color Chromate | 61 | Nickel QQ-N-290 CL 1, Type VI KC |
| | | 63 | Ductile Nickel |
| | | 66 | Electroless Nickel |
| | | 91 | Silver QQ-S-365 |

*Standard finishes: Zinc (Clear Chromate) on brass material, Iridite (Gold #14) on aluminum material.



3/8 HEX SPACERS



| | | | | | |
|----------------------|-----------------|--------------------------|-----------------------|--------------------|---------------|
| ORDERING CODE | XX | XXXX | XX | XXXX | XX |
| | MATERIAL | BASIC PART NUMBER | CLEARANCE CODE | LENGTH CODE | FINISH |

| MATERIAL | CODE |
|-----------------|-----------|
| ALUMINUM | AL |
| BRASS | BR |
| STAINLESS STEEL | SS |
| STEEL | ST |

NOTE: See Page A4 for additional materials and specifications.

| |
|-----------------------|
| BASIC PART NO. |
| 6353 |

| CLEARANCEHOLE | CODE |
|-----------------|-----------|
| + .010 / - .000 | |
| .140 | 06 |
| .166 | 08 |
| .192 | 10 |

| LENGTH | CODE | LENGTH | CODE |
|--------|--------------|---------|--------------|
| 1/8 | 0.125 | 1" | 1.000 |
| 3/16 | 0.187 | 1 1/16 | 1.062 |
| 1/4 | 0.250 | 1 1/8 | 1.125 |
| 5/16 | 0.312 | 1 3/16 | 1.187 |
| 3/8 | 0.375 | 1 1/4 | 1.250 |
| 7/16 | 0.437 | 1 5/16 | 1.312 |
| 1/2 | 0.500 | 1 3/8 | 1.375 |
| 9/16 | 0.562 | 1 7/16 | 1.437 |
| 5/8 | 0.625 | 1 1/2 | 1.500 |
| 11/16 | 0.687 | 1 9/16 | 1.562 |
| 3/4 | 0.750 | 1 5/8 | 1.625 |
| 13/16 | 0.812 | 1 11/16 | 1.687 |
| 7/8 | 0.875 | 1 3/4 | 1.750 |
| 15/16 | 0.937 | 1 13/16 | 1.812 |
| | | 1 7/8 | 1.875 |
| | | 1 15/16 | 1.937 |
| | | 2" | 2.000 |

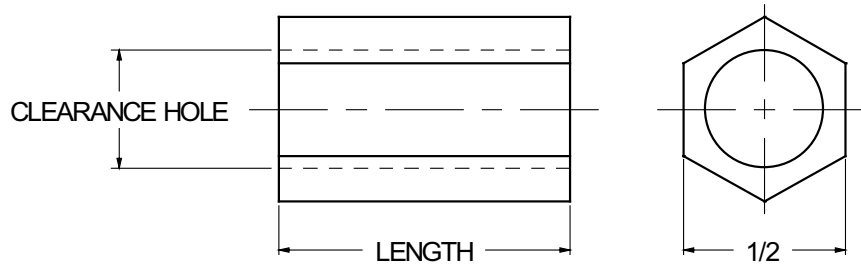
| CODE | FINISH | CODE | FINISH |
|------------|--|------------|--|
| 00 | Plain — None | 33 | Black Zinc |
| 01 | Passivate MIL-F-14072-E300 | 34* | Zinc QQ-Z-325, Type II, CL 3 — Clear Chromate |
| 02 | Caustic Etch | 35 | Zinc QQ-Z-325, Type I, CL 3 |
| 03 | Bright Dip — Brass | 36 | Zinc QQ-Z-325, Type II, CL 3 — Yellow Chromate |
| 11 | Anodize MIL-A-8625C, Type I | 42 | Electro Tin MIL-T-10727, Type I (Dull) |
| | Chromic Hot Water Seal — Dark Grey | 43 | Electro Tin MIL-T-10727 C, Type I (Bright) |
| 12 | Anodize MIL-A-8625C, Type II | 44 | Electro Tin (Solder) MIL-F-14072 M230/M222 |
| | Sulphuric Hot Water Seal — Clear | 48 | Copper / Nickel / Bright Tin |
| 13 | Anodize MIL-A-8625C, Type II | 50 | Black Oxide MIL-C-13924 — Steel |
| | Sulphuric Dichromate Seal — Yellow Green | 51 | Black Oxide MIL-F-495 — Brass |
| 14 | Anodize MIL-A-8625C — Black | 52 | Black Oxide MIL-C-13924 — Stainless Steel |
| 21 | Iridite MIL-C-5541 — Clear | 61 | Nickel QQ-N-290 CL 1, Type VI KC |
| 22* | Iridite MIL-C-5541 — Gold #14 | 63 | Ductile Nickel |
| 31 | Cadmium QQ-P-416, CL 2 — Clear Chromate | 66 | Electroless Nickel |
| 32 | Cadmium QQ-P-416, CL 2 — Color Chromate | 91 | Silver QQ-S-365 |

*Standard finishes: Zinc (Clear Chromate) on brass material, Iridite (Gold #14) on aluminum material.

A17



1/2 HEX SPACERS



| | | | | | |
|----------------------|-----------------|--------------------------|-----------------------|--------------------|---------------|
| ORDERING CODE | XX | XXXX | XX | XXXX | XX |
| | MATERIAL | BASIC PART NUMBER | CLEARANCE CODE | LENGTH CODE | FINISH |

| MATERIAL | CODE |
|-----------------|-----------|
| ALUMINUM | AL |
| BRASS | BR |
| STAINLESS STEEL | SS |
| STEEL | ST |

NOTE: See Page A4 for additional materials and specifications.

| |
|-----------------------|
| BASIC PART NO. |
| 6355 |

| CLEARANCEHOLE | CODE |
|-----------------|-----------|
| + .010 / - .000 | |
| .166 | 08 |
| .192 | 10 |
| .218 | 12 |
| .252 | 25 |

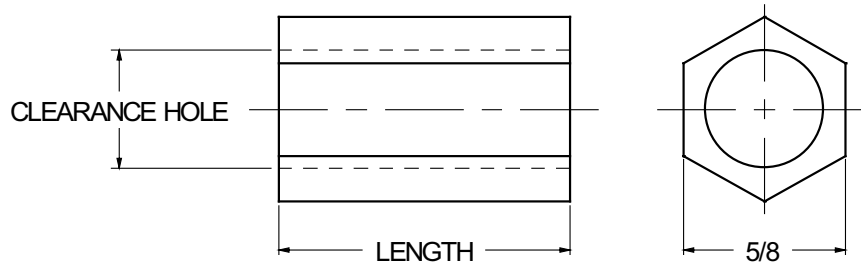
| LENGTH | CODE | LENGTH | CODE |
|--------|--------------|---------|--------------|
| 1/8 | 0.125 | 1" | 1.000 |
| 3/16 | 0.187 | 1 1/16 | 1.062 |
| 1/4 | 0.250 | 1 1/8 | 1.125 |
| 5/16 | 0.312 | 1 3/16 | 1.187 |
| 3/8 | 0.375 | 1 1/4 | 1.250 |
| 7/16 | 0.437 | 1 5/16 | 1.312 |
| 1/2 | 0.500 | 1 3/8 | 1.375 |
| 9/16 | 0.562 | 1 7/16 | 1.437 |
| 5/8 | 0.625 | 1 1/2 | 1.500 |
| 11/16 | 0.687 | 1 9/16 | 1.562 |
| 3/4 | 0.750 | 1 5/8 | 1.625 |
| 13/16 | 0.812 | 1 11/16 | 1.687 |
| 7/8 | 0.875 | 1 3/4 | 1.750 |
| 15/16 | 0.937 | 1 13/16 | 1.812 |
| | | 1 7/8 | 1.875 |
| | | 1 15/16 | 1.937 |
| | | 2" | 2.000 |

| CODE | FINISH | CODE | FINISH |
|------------|--|------------|--|
| 00 | Plain — None | 33 | Black Zinc |
| 01 | Passivate MIL-F-14072-E300 | 34* | Zinc QQ-Z-325, Type II, CL 3 — Clear Chromate |
| 02 | Caustic Etch | 35 | Zinc QQ-Z-325, Type I, CL 3 |
| 03 | Bright Dip — Brass | 36 | Zinc QQ-Z-325, Type II, CL 3 — Yellow Chromate |
| 11 | Anodize MIL-A-8625C, Type I Chromic Hot Water Seal — Dark Grey | 42 | Electro Tin MIL-T-10727, Type I (Dull) |
| 12 | Anodize MIL-A-8625C, Type II Sulphuric Hot Water Seal — Clear | 43 | Electro Tin MIL-T-10727 C, Type I (Bright) |
| 13 | Anodize MIL-A-8625C, Type II Sulphuric Dichromate Seal — Yellow Green | 44 | Electro Tin (Solder) MIL-F-14072 M230/M222 |
| 14 | Anodize MIL-A-8625C — Black | 48 | Copper / Nickel / Bright Tin |
| 21 | Iridite MIL-C-5541 — Clear | 50 | Black Oxide MIL-C-13924 — Steel |
| 22* | Iridite MIL-C-5541 — Gold #14 | 51 | Black Oxide MIL-F-495 — Brass |
| 31 | Cadmium QQ-P-416, CL 2 — Clear Chromate | 52 | Black Oxide MIL-C-13924 — Stainless Steel |
| 32 | Cadmium QQ-P-416, CL 2 — Color Chromate | 61 | Nickel QQ-N-290 CL 1, Type VI KC |
| | | 63 | Ductile Nickel |
| | | 66 | Electroless Nickel |
| | | 91 | Silver QQ-S-365 |

*Standard finishes: Zinc (Clear Chromate) on brass material, Iridite (Gold #14) on aluminum material.



5/8 HEX SPACERS



| | | | | | |
|----------------------|----------|-------------------|----------------|-------------|--------|
| ORDERING CODE | XX | XXXX | XX | XXXX | XX |
| | MATERIAL | BASIC PART NUMBER | CLEARANCE CODE | LENGTH CODE | FINISH |

| MATERIAL | CODE |
|-----------------|------|
| ALUMINUM | AL |
| BRASS | BR |
| STAINLESS STEEL | SS |
| STEEL | ST |

NOTE: See Page A4 for additional materials and specifications.

| |
|-----------------------|
| BASIC PART NO. |
| 6356 |

| CLEARANCEHOLE | CODE |
|-----------------|------|
| + .010 / - .000 | |
| .192 | 10 |
| .218 | 12 |
| .252 | 25 |
| .315 | 31 |
| .377 | 38 |

| LENGTH | CODE | LENGTH | CODE |
|--------|-------|---------|-------|
| 1/8 | 0.125 | 1" | 1.000 |
| 3/16 | 0.187 | 1 1/16 | 1.062 |
| 1/4 | 0.250 | 1 1/8 | 1.125 |
| 5/16 | 0.312 | 1 3/16 | 1.187 |
| 3/8 | 0.375 | 1 1/4 | 1.250 |
| 7/16 | 0.437 | 1 5/16 | 1.312 |
| 1/2 | 0.500 | 1 3/8 | 1.375 |
| 9/16 | 0.562 | 1 7/16 | 1.437 |
| 5/8 | 0.625 | 1 1/2 | 1.500 |
| 11/16 | 0.687 | 1 9/16 | 1.562 |
| 3/4 | 0.750 | 1 5/8 | 1.625 |
| 13/16 | 0.812 | 1 11/16 | 1.687 |
| 7/8 | 0.875 | 1 3/4 | 1.750 |
| 15/16 | 0.937 | 1 13/16 | 1.812 |
| | | 1 7/8 | 1.875 |
| | | 1 15/16 | 1.937 |
| | | 2" | 2.000 |

| CODE | FINISH | CODE | FINISH |
|------|--|------|--|
| 00 | Plain — None | 33 | Black Zinc |
| 01 | Passivate MIL-F-14072-E300 | 34* | Zinc QQ-Z-325, Type II, CL 3 — Clear Chromate |
| 02 | Caustic Etch | 35 | Zinc QQ-Z-325, Type I, CL 3 |
| 03 | Bright Dip — Brass | 36 | Zinc QQ-Z-325, Type II, CL 3 — Yellow Chromate |
| 11 | Anodize MIL-A-8625C, Type I Chromic Hot Water Seal — Dark Grey | 42 | Electro Tin MIL-T-10727, Type I (Dull) |
| 12 | Anodize MIL-A-8625C, Type II Sulphuric Hot Water Seal — Clear | 43 | Electro Tin MIL-T-10727 C, Type I (Bright) |
| 13 | Anodize MIL-A-8625C, Type II Sulphuric Dichromate Seal — Yellow Green | 44 | Electro Tin (Solder) MIL-F-14072 M230/M222 |
| 14 | Anodize MIL-A-8625C — Black | 48 | Copper / Nickel / Bright Tin |
| 21 | Iridite MIL-C-5541 — Clear | 50 | Black Oxide MIL-C-13924 — Steel |
| 22* | Iridite MIL-C-5541 — Gold #14 | 51 | Black Oxide MIL-F-495 — Brass |
| 31 | Cadmium QQ-P-416, CL 2 — Clear Chromate | 52 | Black Oxide MIL-C-13924 — Stainless Steel |
| 32 | Cadmium QQ-P-416, CL 2 — Color Chromate | 61 | Nickel QQ-N-290 CL 1, Type VI KC |
| | | 63 | Ductile Nickel |
| | | 66 | Electroless Nickel |
| | | 91 | Silver QQ-S-365 |

A19

*Standard finishes: Zinc (Clear Chromate) on brass material, Iridite (Gold #14) on aluminum material.