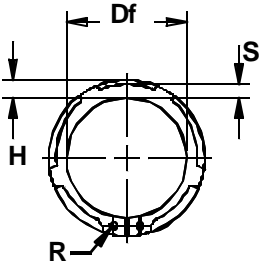
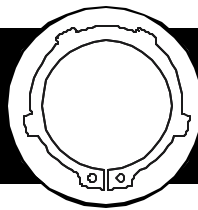
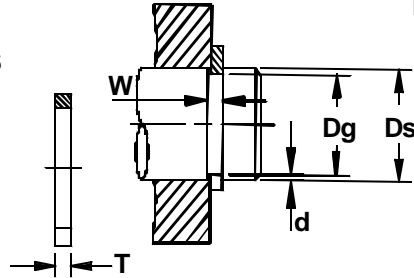




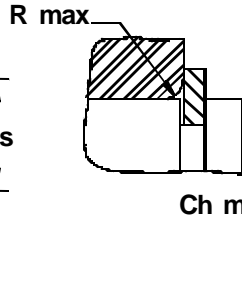
# DST-External Metric Retaining Ring



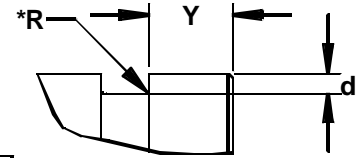
Free Diameter & Ring Measurements  
With Section B-B



Shaft Diameter &  
Groove Dimensions



Maximum Corner Radius & Chamfer



\*The radius "R" on the load side must not exceed 0.1T.

RING NO.	SHAFT		GR GROOVE SIZE				RING SIZE & WBGT							SUPPLEMENTARY DATA						
	DIAMETER		DIAMETER	WIDTH	DEPTH	THICKNESS		FREE DIAMETER		LUG HT.	MAX. SEC.	HOLE DIA.	WEIGHT	EDGE MARGIN	THRUST LOAD Ring	THRUST LOAD Groove	Allowable Rad/Cham.	Max. load w/ R/Ch. Max.	RPM Limits	
	Ds	Dg				Tol.	W	d	T											Td.
DST-16	16	15.2	-0.11	1.10	0.40	1.00	-0.06	14.7	+0.10	3.5	2.3	1.7	0.82	12	7.4	326	10	2.4	45000	
DST-17	17	16.2		1.10	0.40	1.00		15.7		3.6	2.4	1.7	0.93	12	8.0	346	10	2.4	41000	
DST-18	18	17.0		1.30	0.50	1.20		16.5		3.7	2.5	2.0	1.24	15	17.0	458	15	3.7	38000	
DST-19	19	18.0	1.30	0.50	1.20	17.5		3.7	2.6	2.0	1.35	15	17.0	485	15	3.8	33000			
DST-20	20	19.0	1.30	0.50	1.20	18.5		3.8	2.6	2.0	1.45	15	17.1	506	15	3.8	30000			
DST-22	22	21.0	-0.5	1.30	0.50	1.20		20.5	+0.13	4.0	2.8	2.0	1.77	15	16.9	565	15	3.8	26000	
DST-23	23	22.0	-0.21	1.30	0.50	1.20		21.5	0.42	4.1	2.9	2.0	1.84	15	16.6	590	15	3.8	24000	
DST-24	24	22.9		1.30	0.55	1.20		22.2	4.2	3.0	2.0	1.98	16	16.1	675	15	3.6	26000		
DST-25	25	23.9		1.30	0.55	1.20		23.2	4.3	3.0	2.0	2.12	16	16.2	705	15	3.7	24000		
DST-26	26	24.9		-0.21	1.30	0.55		1.20	24.2	4.4	3.1	2.0	2.18	16	16.1	734	15	3.7	22000	
DST-28	28	26.6		1.60	0.70	1.50	25.9	+0.21	4.5	3.3	2.0	3.15	21	32.1	1000	15	7.5	20000		
DST-29	29	27.6		1.60	0.70	1.50	26.9	0.42	4.7	3.4	2.0	3.35	21	31.8	1030	15	7.4	19000		
DST-30	30	28.6		1.60	0.70	1.50	27.9	4.7	3.4	2.0	3.65	21	32.1	1070	15	7.6	18000			
DST-32	32	30.3		-0.25	1.60	0.85	1.50	29.6	+0.25	5.0	3.6	2.5	4.00	25	31.2	1380	20	5.5	16000	
DST-34	34	32.3			1.60	0.85	1.50	31.5		5.1	3.8	2.5	4.15	25	31.3	1470	20	5.6	16000	
DST-35	35	33.0			1.60	1.00	1.50	32.2		5.2	3.8	2.5	4.38	30	30.8	1780	20	5.5	15000	
DST-37	37	35.0	1.85		1.00	1.75	34.2	0.50		5.4	4.0	2.5	6.30	30	50.0	1880	20	9.1	13000	
DST-38	38	36.0	1.85		1.00	1.75	35.2	5.5		4.1	2.5	6.50	30	49.5	1930	20	9.1	13000		
DST-40	40	37.5	-0.25		1.85	1.25	1.75	36.5		7.2	4.2	2.5	7.00	38	51.0	2530	20	9.5	14000	
DST-42	42	39.5	1.85		1.25	1.75	38.5	7.2		4.5	2.5	7.50	38	50.0	2670	20	9.4	13000		
DST-45	45	42.5	1.85		1.25	1.75	41.5	+0.39		7.2	4.6	2.5	8.50	38	49.0	2860	20	9.3	11000	
DST-47	47	44.5	1.85		1.25	1.75	43.5	0.90		7.2	4.8	2.5	8.70	38	49.5	3000	20	9.5	10000	
DST-48	48	45.5	1.85		1.25	1.75	44.5	7.2		4.9	2.5	8.90	38	49.4	3070	20	9.5	9000		
DST-50	50	47.0	-0.30	2.15	1.50	2.00	45.8	+0.46	8.2	5.0	2.5	11.50	45	73.3	3800	20	14.4	10000		
DST-55	55	52.0		2.15	1.50	2.00	50.8		8.2	5.4	2.5	12.99	45	71.4	4200	25	11.4	8000		
DST-57	57	54.0		2.15	1.50	2.00	52.8		8.2	5.6	2.5	14.00	45	70.9	4370	25	11.4	8000		
DST-58	58	55.0		2.15	1.50	2.00	53.8		8.2	5.7	2.5	14.30	45	71.1	4430	25	11.5	8000		
DST-60	60	57.0		2.15	1.50	2.00	55.8		8.2	5.8	2.5	14.80	45	69.3	4600	25	11.3	7000		
DST-62	62	59.0		2.15	1.50	2.00	57.8		8.2	5.9	2.5	15.90	45	69.3	4750	25	11.4	7000		
DST-65	65	62.0		-0.30	2.65	1.50	2.50		60.8	+0.46	10.2	6.2	3.0	21.70	45	135.0	4980	25	22.7	6000
DST-67	67	64.0		2.65	1.50	2.50	62.5		1.10	10.2	6.4	3.0	22.60	45	136.0	5130	25	23.0	7000	
DST-68	68	65.0		2.65	1.50	2.50	63.5		10.2	6.5	3.0	23.50	45	135.0	5220	25	23.0	7000		
DST-70	70	67.0		2.65	1.50	2.50	65.5		10.2	6.6	3.0	25.10	45	134.0	5380	25	23.0	6000		
DST-75	75	72.0	2.65	1.50	2.50	70.5	10.2	7.0	3.0	28.20	45	130.0	5760	25	22.8	6000				
DST-80	80	76.5	2.65	1.75	2.50	74.5	10.2	7.4	3.0	30.75	53	128.0	7160	30	19.5	6000				
DST-85	85	81.5	-0.35	3.15	1.75	3.00	79.5	+0.54	10.2	7.8	3.5	39.50	53	215.0	7620	30	33.4	5000		
DST-90	90	86.5		3.15	1.75	3.00	84.5		10.2	8.2	3.5	47.70	53	217.0	8020	30	33.4	5000		
DST-95	95	91.5		3.15	1.75	3.00	89.5		10.2	8.6	3.5	53.00	53	212.0	8560	35	29.3	4000		
DST-100	100	96.5		3.15	1.75	3.00	94.5		10.2	9.0	3.5	56.60	53	206.0	9000	35	29.0	4000		
DST-110	110	106.0		-0.54	4.15	2.00	4.00		103.0	1.30	12.2	9.6	3.5	84.60	60	457.0	11300	35	66.9	4000
DST-120	120	116.0		4.15	2.00	4.00	113.0		14.2	10.1	3.5	89.70	60	424.0	12300	35	64.5	4000		
DST-130	130	126.0		-0.6	4.15	2.00	4.00		123.0	14.2	10.7	4.0	105.00	60	395.0	13400	40	55.2	3000	
DST-140	140	136.0		4.15	2.00	4.00	133.0		14.2	11.2	4.0	115.00	60	376.0	14400	40	54.4	3000		